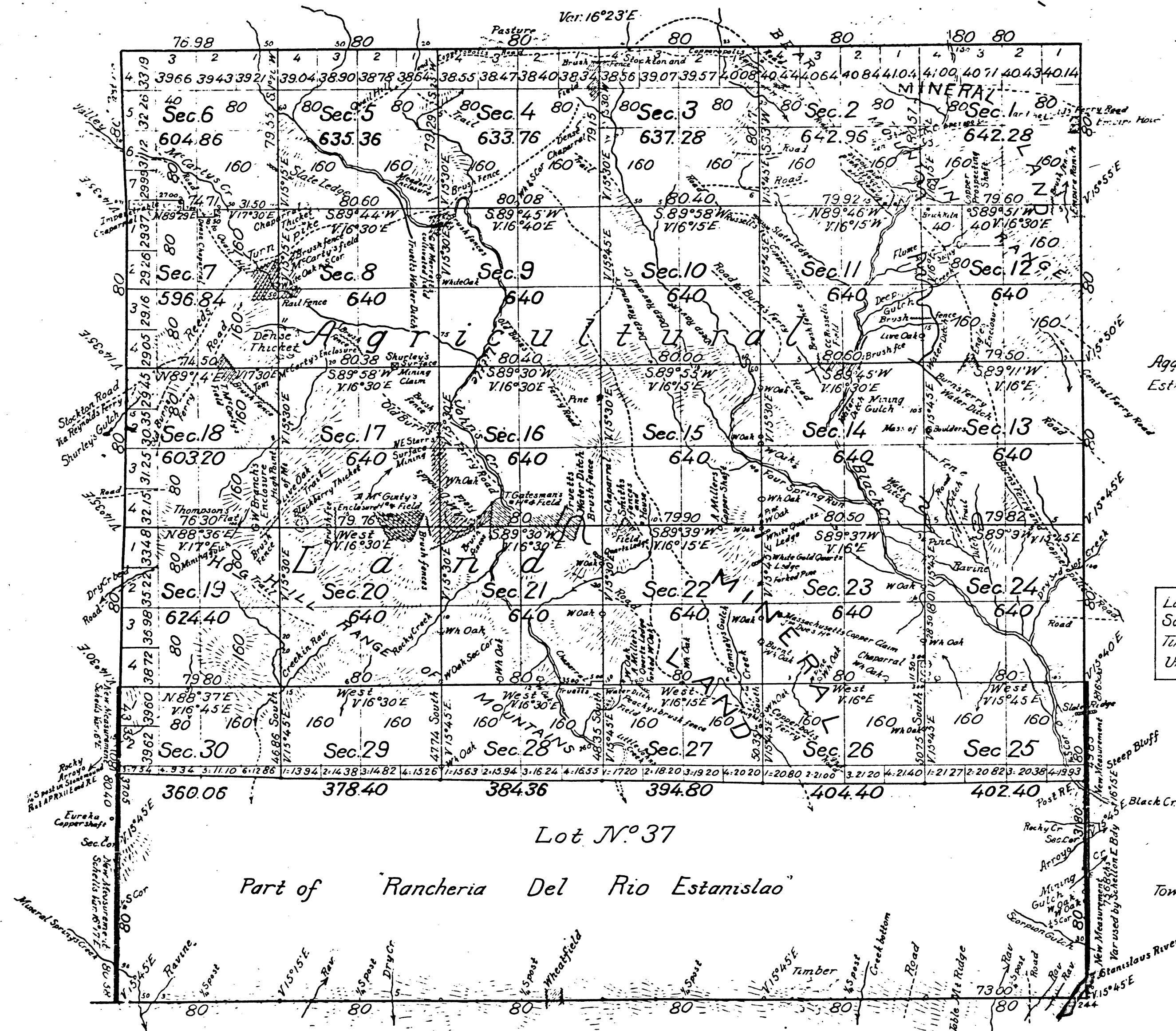


Township N.º 1 North, Range N.º 12 East, Mt. Diablo Meridian.



G.C.M.  
1855

Aggregate Area of Public Land 17,545.36 Acres  
Estimated Lot N.º 37 (Private Grant) 5,354.78  
Aggregate 22,900.14

Land: mountainous, broken and rolling  
Soil: 2nd and 3rd rates  
Timber: oak, pine and manzanita  
Undergrowth: buckeye, live-oak and chaparral

DEPARTMENT OF THE INTERIOR,  
GENERAL LAND OFFICE  
Washington, D. C. Sept. 4, 1907.  
I hereby certify that this is a true copy  
of the plat of official survey of the lands  
to which it relates, on file in this office.

*H. H. S. Jones*  
Recorder, General Land Office.

Surveys designated	By whom surveyed	Date of Contract	Amount of Surveys	When Surveyed
South Boundary of Township	A W Von Schmidt	May 30, 1855		1855
N.º E. & W.	Fleming Amyx	Sept. 30, 1858		1858
Boundaries Lot N.º 37	A G Stokes	April 23 1857 Instr's		1857
Township Boundaries (colored green; re-survey)	G W Schell	Oct. 23, 1869	3 mls 78 chs. 31 lks	1870
Section Lines	" "	" "	46. 69. 55.	April 22 <sup>d</sup> 1870

The above Map of Township N.º 1 North, Range N.º 12 East, Mount Diablo Meridian, is strictly conformable to the field notes of the surveys thereof on file in this Office which have been examined and approved

Surveyor General's Office  
San Francisco, California  
July 2<sup>nd</sup> 1870

*Sherman Day*  
Surv. Gen. Cal.