

PARCEL MAP NO.

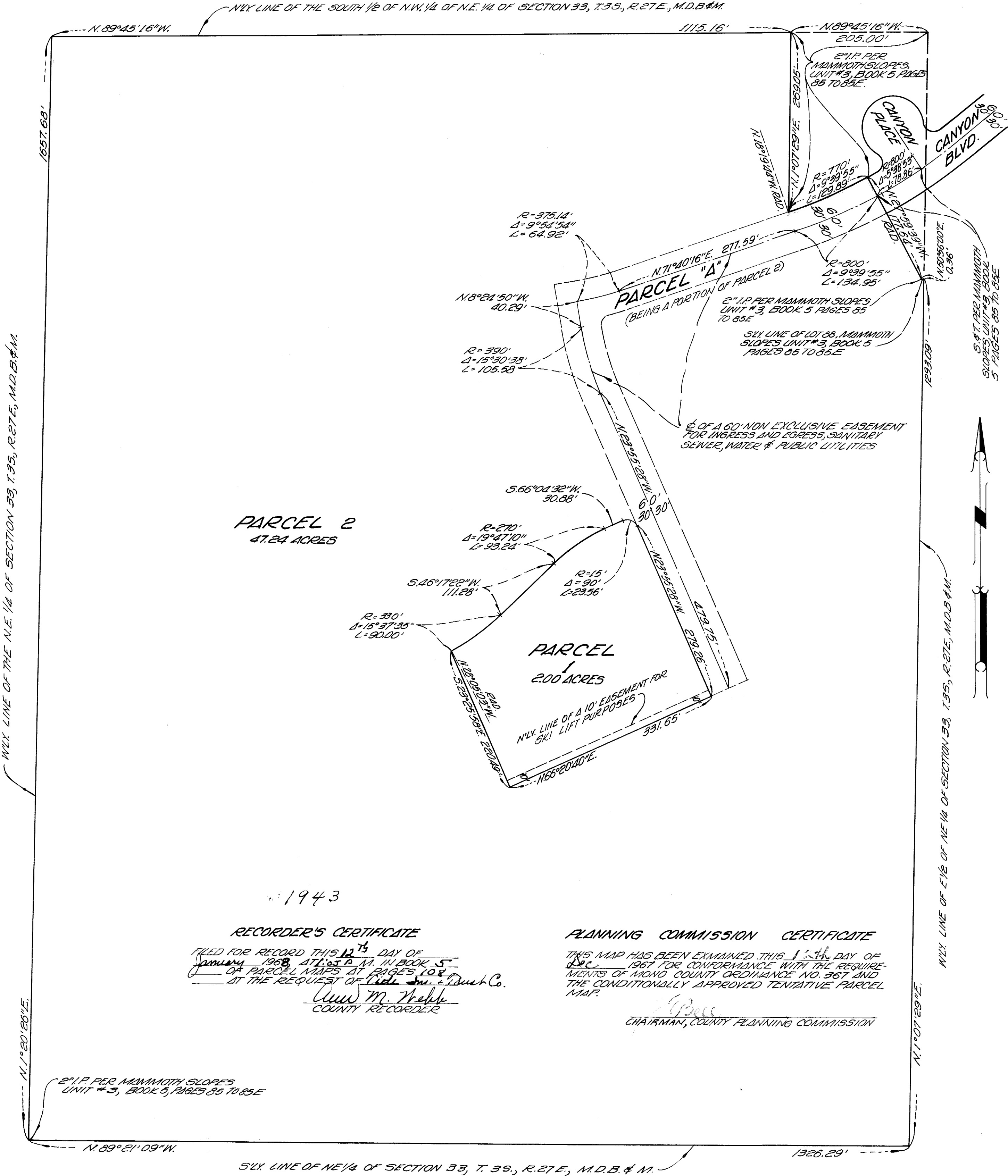
IN THE COUNTY OF MONO  
STATE OF CALIFORNIA  
BEING A DIVISION OF THE NORTHEAST ONE-QUARTER OF SECTION 33,  
TOWNSHIP 3 SOUTH, RANGE 27 EAST, M. D. B. & M..

BASIS OF BEARINGS

THE BEARING N. 50° 56' 00" E. OF THE CENTER LINE OF CANYON BOULEVARD AS SHOWN ON MAP OF MAMMOTH SLOPES UNIT NO. 3, RECORDED IN BOOK 5, PAGES 85 TO 85 E. OF MAPS, RECORDS OF MONO COUNTY WAS TAKEN AS THE BASIS OF BEARINGS SHOWN ON THIS MAP.

THIS MAP WAS PREPARED BY ME, OR UNDER MY DIRECTION, AND WAS COMPILED FROM RECORD DATA IN CONFORMANCE WITH THE REQUIREMENTS OF THE SUB-DIVISION MAP ACT AT THE REQUEST OF MAMMOTH SLOPES DEVELOPMENT, ON NOV. 2, 1967. I HEREBY CERTIFY THAT IT CONFORMS TO THE APPROVED TENTATIVE MAP AND THE CONDITIONS OF APPROVAL THEREOF. THAT ALL PROVISIONS OF APPLICABLE STATE LAWS AND LOCAL ORDINANCES HAVE BEEN COMPLIED WITH.

*Donald Miller*  
DONALD MILLER R.C.E. 15360  
JENNINGS ENGINEERING COMPANY



RECORDER'S CERTIFICATE

FILED FOR RECORD THIS 12<sup>TH</sup> DAY OF  
January 1968, AT 1:05 P.M. IN BOOK 5  
OF PARCEL MAPS AT PAGES 108  
AT THE REQUEST OF *Mill & Dent Co.*  
*Ann M. Threlk*  
COUNTY RECORDER

PLANNING COMMISSION CERTIFICATE

THIS MAP HAS BEEN EXAMINED THIS 12<sup>TH</sup> DAY OF  
Dec 1967 FOR CONFORMANCE WITH THE REQUIRE-  
MENTS OF MONO COUNTY ORDINANCE NO. 367 AND  
THE CONDITIONALLY APPROVED TENTATIVE PARCEL  
MAP.

*Boice*  
CHAIRMAN, COUNTY PLANNING COMMISSION