

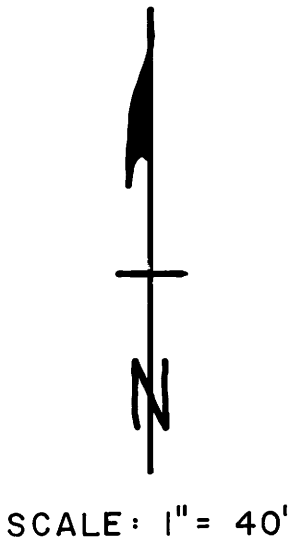
RECORD OF SURVEY NO. 36-18

IN THE SE 1/4 OF THE NE 1/4 OF SEC 33, T3S,  
R27E, MDB&M.

RECORDER'S CERTIFICATE

Filed this 3 day of OCTOBER,  
1979, at 2:08 P.M. in Book 1  
of RECORD OF SURVEY at page 43, at the  
request of George H. Wyman.  
#2512

*Richard L. Strait*  
County Recorder



SURVEYOR'S CERTIFICATE

This map correctly represents a survey made by me  
or under my direction in conformance with the  
requirements of the Land Surveyor's Act at the  
request of George H. Wyman, August, 1979.

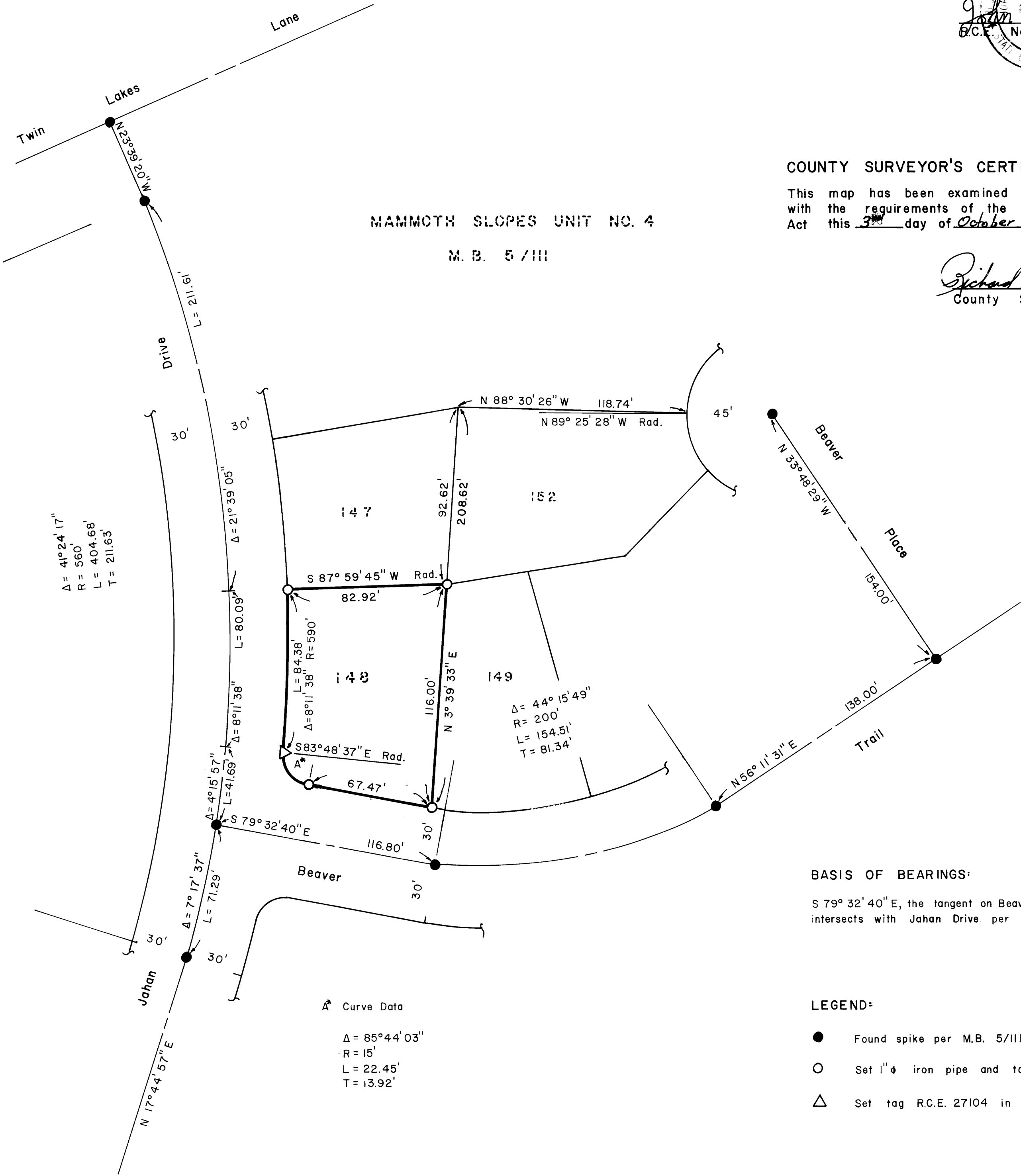
*John R. Lynford*  
C.E. No. 27104  
CIVIL  
STATE OF CALIFORNIA

COUNTY SURVEYOR'S CERTIFICATE

This map has been examined for conformance  
with the requirements of the Land Surveyor's  
Act this 3rd day of October, 1979.

*Richard L. Gault, P.E.*  
County Surveyor

MAMMOTH SLOPES UNIT NO. 4  
M.B. 5/III



BASIS OF BEARINGS:  
S 79° 32' 40" E, the tangent on Beaver Trail which  
intersects with Jahan Drive per M.B. 5/III.

- LEGEND:
- Found spike per M.B. 5/III.
  - Set 1" iron pipe and tag R.C.E. 27104.
  - △ Set tag R.C.E. 27104 in concrete on rock.