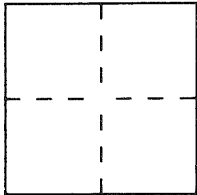


CORNER RECORDDocument Number 535City of OAKLANDCounty of ALAMEDA, CaliforniaBrief Legal Description LOT 32, "CLAREMONT WOODLANDS (4 M 49)"**CORNER TYPE**

Government Corner ☐ Control ☐
 Meander ☐ Property ☒
 Rancho ☐ Other ☐
 Date of Survey MAY 19, 1992

**COORDINATES
(Optional)**

N. _____
 E. _____
 Zone _____ Datum _____
 Elev. _____

Corner — Left as found ☐ Found and tagged ☐ Established ☒ Reestablished ☐ Rebuilt ☐

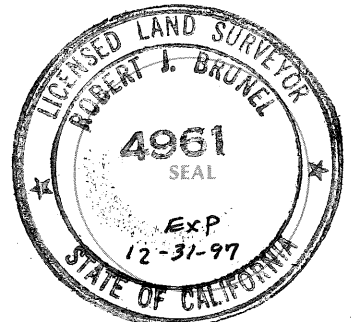
Identification and type of corner found: Evidence used to identify or procedure used to establish or reestablish the corner:
FOUND ORIGINAL CITY OF OAKLAND CONCRETE MONUMENT IN AVOCA AVENUE (FORMERLY WILLARD AVENUE), AS SHOWN ON "CLAREMONT WOODLANDS" (4 M 49)

A description of the physical condition of the monument as found and as set or reset: _____
SET 5/8" REBAR & CAP, L.S. 4961

SURVEYOR'S STATEMENT

This Corner Record was prepared by me or under my direction in conformance with the Land Surveyors' Act on JUNE 20, 19 95.

Signed Robert J. Brunel L.S. or R.C.E. Number 4961
7-12-95

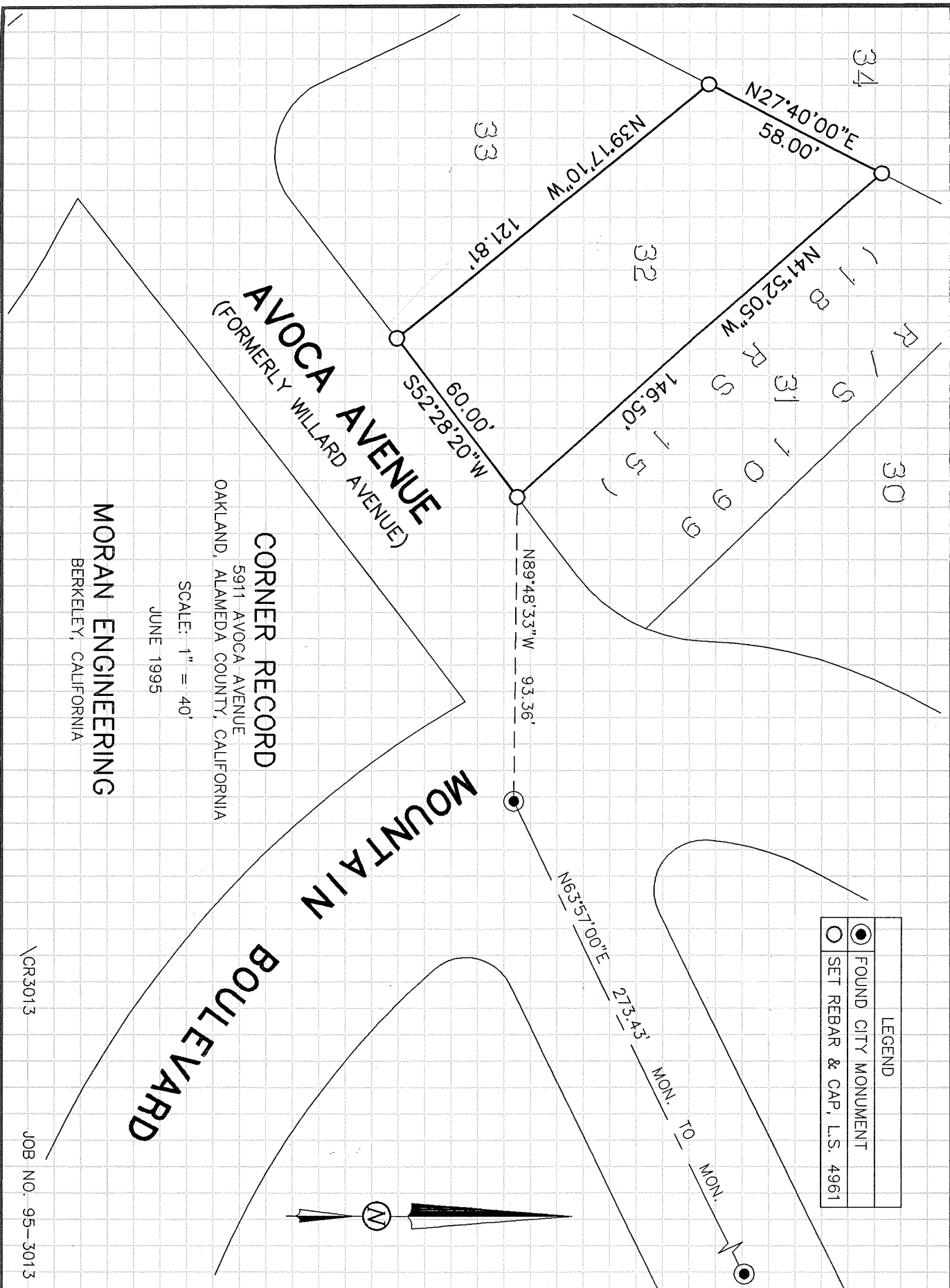
**COUNTY SURVEYOR'S STATEMENT**

This Corner Record was received 2-9 19 95 and examined
 and filed 8-23 19 95

Signed Russell R. Penland, Jr. Title DEPUTY COUNTY SURVEYOR
EXP. 12-31-95



County Surveyor's Comment _____



LEGEND	
●	FOUND CITY MONUMENT
○	SET REBAR & CAP, L.S. 4961