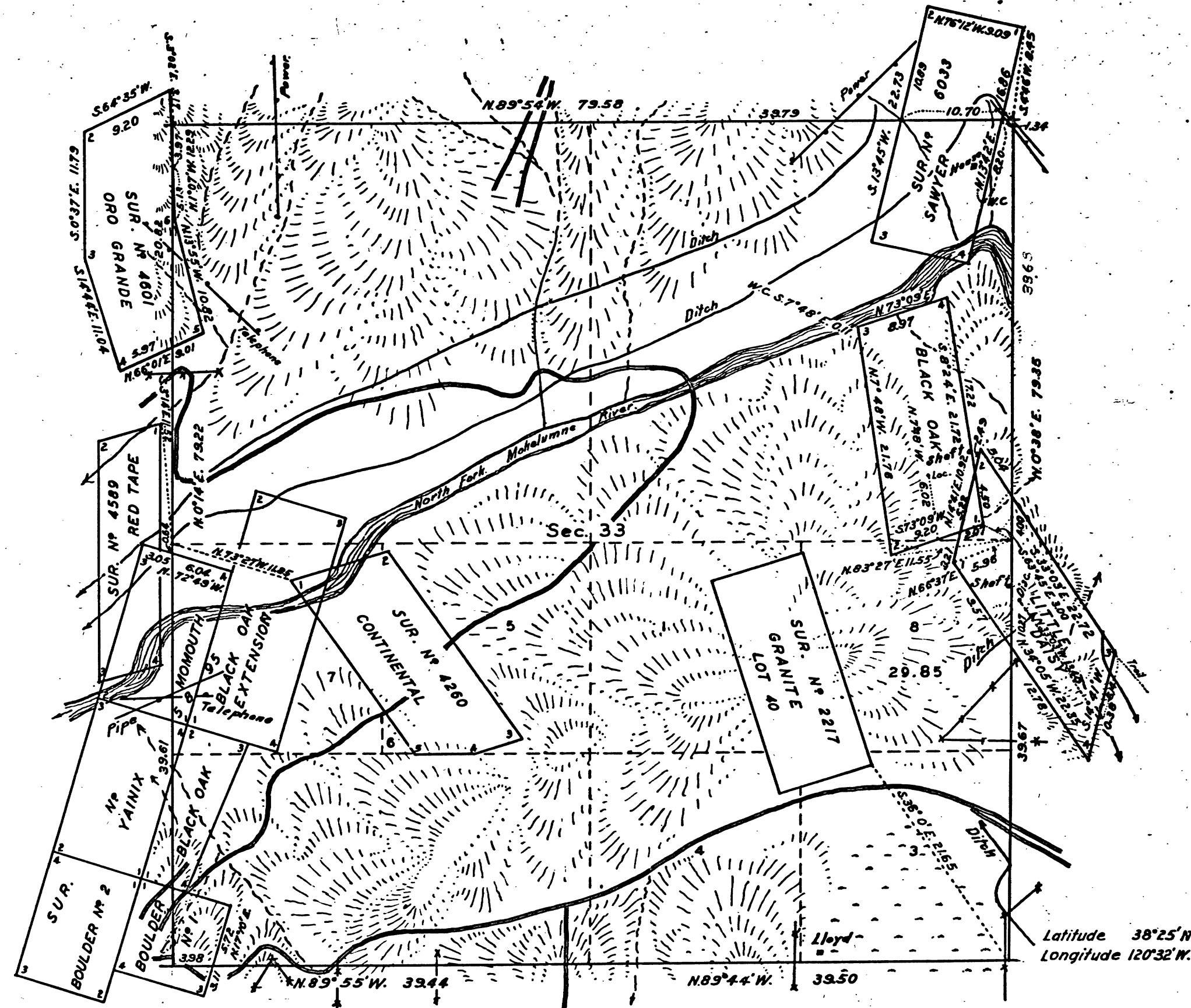
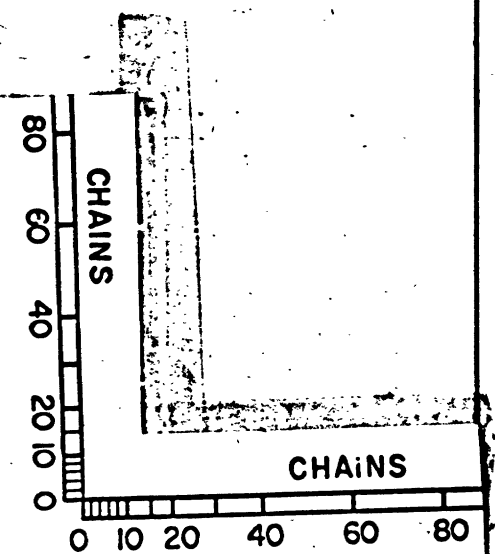


TOWNSHIP N° 7 NORTH, RANGE N° 13 EAST, MOUNT DIABLO MERIDIAN, CALIFORNIA.
SUPPLEMENTAL PLAT OF SECTION 33.



Dependent resurvey of the boundaries of section 33, with metes-and-bounds survey of land classified as mineral bearing, and connecting lines, defining lottings of fractional areas of adjoining nonmineral land to accommodate homestead entry Sacramento 023060, executed by William E. Hiester, surveyor, April 30 to May 12, 1937, inclusive, under special instructions dated April 4, 1936, for Group No. 256, authorized by the Commissioner's letter E dated March 13, 1936.
Boundaries of section 33 surveyed by D.F. Douglas, D.S. in 1858 and W.L. McNim, D.S. in 1873, as shown upon the plat approved March 29, 1878.

Latitude 38°25' N.
Longitude 120°32' W.



Scale: 10 Chains to an inch.		
LINES DESIGNATED	MILEAGE.	
	MLS.	CHS.
Exterior	2	78.94
Subdivisional	1	78.15
Mining Claims		48.75
Miscellaneous		26.61

O.S.T.

Office of Supervisor of Surveys.
Denver, Colorado, November 4, 1938.
The above supplemental plat of section 33, Township No. 7 North, Range No. 13 East of the Mount Diablo Meridian, California, is strictly conformable to the field notes of the survey thereof, which have been examined and approved.

Wm. E. Hiester
Supervisor of Surveys.

UNITED STATES
DEPARTMENT OF THE INTERIOR
GENERAL LAND OFFICE
Washington, D.C., Dec. 15, 1938.
The survey represented by this plat having been correctly executed in accordance with the requirements of law and the regulations of this office, is hereby accepted.

Antoinette Funk
Assistant Commissioner.