

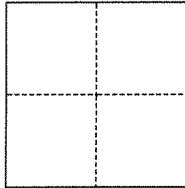
CORNER RECORD

Agency Index

BK 144 PG 12

Document Number

CR 15823

City of Unincorporated Eden Township County of Alameda, CaliforniaBrief Legal Description Monument near 18461 Terry Way**CORNER TYPE****COORDINATES (Optional)**

- ☐ Government Corner ☒ Control
☐ Meander ☐ Property
☐ Rancho ☐ Other

Date of Survey September 27, 2021

N. _____ E. _____

Elevation _____

Units

☐ Metric☒ U.S. Survey Foot

Horizontal Datum _____

Zone _____

Epoch Date _____

Vertical Datum _____

☐ Complies with Public Resources Code §§8801-8819☐ Complies with Public Resources Code §§8890-8902

PLS Act Ref.:

☐ 8765(d)☒ 8771☐ 8773☐ Other:Corner/
Monument:☒ Left as found☐ Established☐ Rebuilt☒ Pre-Construction☐ Found and tagged☐ Reestablished☒ Referenced☐ Post-Construction

Narrative of corner identified and monument as found, set, reset, replaced, or removed:

☒ See sheet #2 for description(s):

Found 1/4" bolt monument in monument well. Set reference ties prior to construction.

SURVEYOR'S STATEMENT

This Corner Record was prepared by me or under my direction in conformance with

the Professional Land Surveyors' Act on October 2, 2021

Signed

P.L.S. or R.C.E. No.

PLS 7947**COUNTY SURVEYOR'S STATEMENT**

This Corner Record was received

and examined and filed

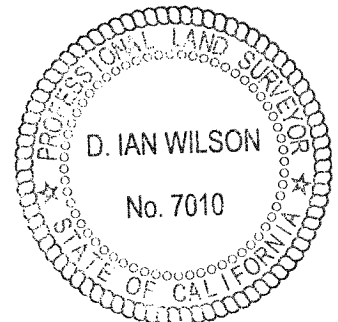
JAN 3 6 2022

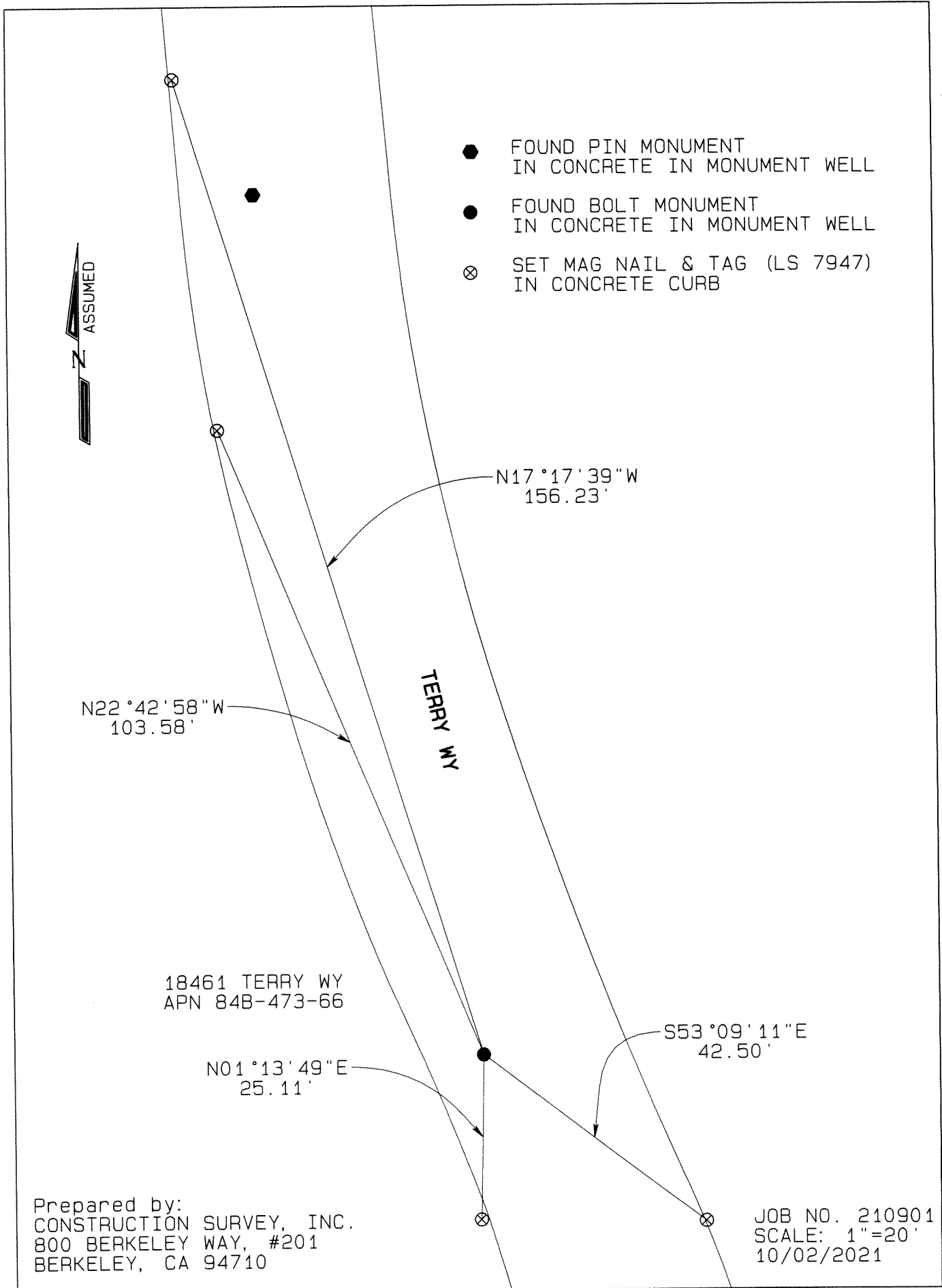
Signed

P.L.S. or R.C.E. No.

7010Title ALAMEDA COUNTY SURVEYOR

County Surveyor's Comment





Prepared by:
CONSTRUCTION SURVEY, INC.
800 BERKELEY WAY, #201
BERKELEY, CA 94710

JOB NO. 210901
SCALE: 1"=20'
10/02/2021