

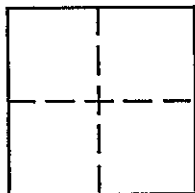
CORNER RECORD

98-067-7 Cr 045

Document Number **CR 957**

City of OAKLAND County of ALAMEDA, California

Brief Legal Description Lot 13, Block 9, Map of Lakeshore Highlands, filed 6-18-17
Map Book 16, Page 37



CORNER TYPE

Government Corner ☐ Control ☒
 Meander ☐ Property ☒
 Rancho ☐ Other ☐
 Date of Survey 1-24-98

COORDINATES (Optional)

N. _____
 E. _____
 Zone _____ Datum _____
 Elev. _____

Corner — Left as found ☒ Found and tagged ☐ Established ☒ Reestablished ☐ Rebuilt ☐

Identification and type of corner found: Evidence used to identify or procedure used to establish or reestablish the corner.
Found 2 monuments (pin - type) as shown. Located but did not excavate
one monument (also shown on reverse). These monuments correspond to
those established via 16M37.

A description of the physical condition of the monument as found and as set or reset:

Set 1 2" Re-Bar and Plastic cap (LS 4700) as shown on reverse.

SURVEYOR'S STATEMENT

The Corner Record was prepared by me or under my direction in conformance with
 the Land Surveyors' Act on January 25, 19 98.

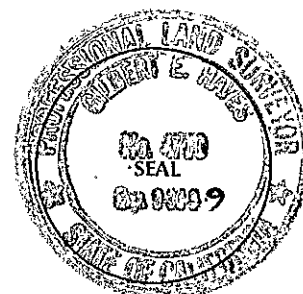
Signed [Signature] L.S. or R.C.E. Number LS 4700

COUNTY SURVEYOR'S STATEMENT

This Corner Record was received 1-28 19 98 and examined
 and filed 1-29 19 98.

Signed Russell R. Penland, Jr. Title Deputy County Surveyor

County Surveyor's Comment _____

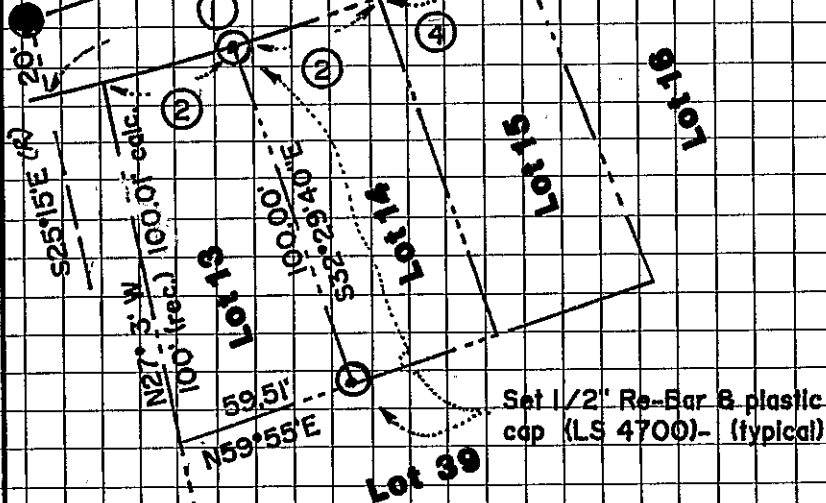


HILLCROFT CIRCLE (typical width = 40')

Found std. pin mon.
at Larkspur as per
Book 16, Pg. 37

Found std. pin mon. as
per 16M37.

Mon. under AC pavement
Not Recovered.



① $\Delta = 15^{\circ}46'$, $R = 604.99'$, $L = 166.48'$

② $\Delta = 4^{\circ}44'07''$, $R = 604.99'$, $L = 50.0'$

③ $\Delta = 22^{\circ}37'20''$, $R = 919.65'$, $L = 363.11'$

④ $\Delta = 3^{\circ}47'07''$, $R = 604.99'$, $L = 39.97'$