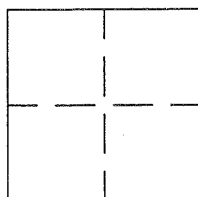


CORNER RECORD

BK 55 PG 40
CR 2036

APN No. _____ (Optional) Document Number _____
UNINCORPORATED AREA County of ALAMEDA, California
Brief Legal Description MONUMENT ON FAIRVIEW AVE.



CORNER TYPE

Government Corner ☐ Control ☐
Meander ☐ Property ☐
Rancho ☐ Other ☒
Date of Survey SEPT. 29, 2003

COORDINATES (Optional)

N. _____
E. _____
Zone _____ Datum _____
Elev. _____

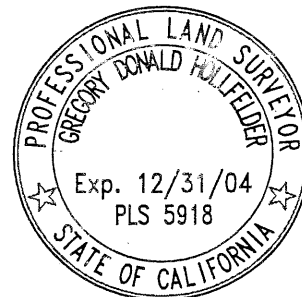
Corner - Left as found ☒ Found and tagged ☐ Established ☐ Reestablished ☐ Rebuilt ☐

In compliance with Section 8771 of the Professional Land Surveyors' Act, this corner record is being filed to ESTABLISH X / REESTABLISH _____ the position of an existing monument PRIOR X / SUBSEQUENT _____ to street or highway reconstruction. (Use this portion only when applicable.)

Identification and type of corner found: Evidence used to identify or procedure used to establish or reestablish the corner:
THE MONUMENT DESCRIBED BELOW WAS REFERENCED BY STRAIGHT LINES THROUGH
THE MONUMENT PIN, STAKES WITH TACKS, AND NAILS. SEE DRAWING ON NEXT PAGE.
A description of the physical condition of the monument as found and as set or reset: A PIN IN A CONCRETE
POST IN A STANDARD MONUMENT WELL WAS FOUND IN GOOD CONDITION ON
FAIRVIEW AVENUE. THIS MONUMENT IS IN DANGER OF BEING DESTROYED DUE
TO ROAD CONSTRUCTION.

SURVEYOR'S STATEMENT

This Corner Record was prepared by me or under my direction in conformance with
the Land Surveyors' Act on JANUARY 8 20 04.
Signed Gregory Donald Hallfelder L.S. or R.S.E. Number 5918



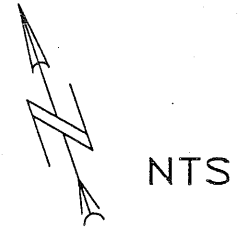
COUNTY SURVEYOR'S STATEMENT

This Corner Record was received 1-26 20 04 and examined
and filed 11-15-2013.
Signed Richard Penland Title County Surveyor



County Surveyor's Comment _____

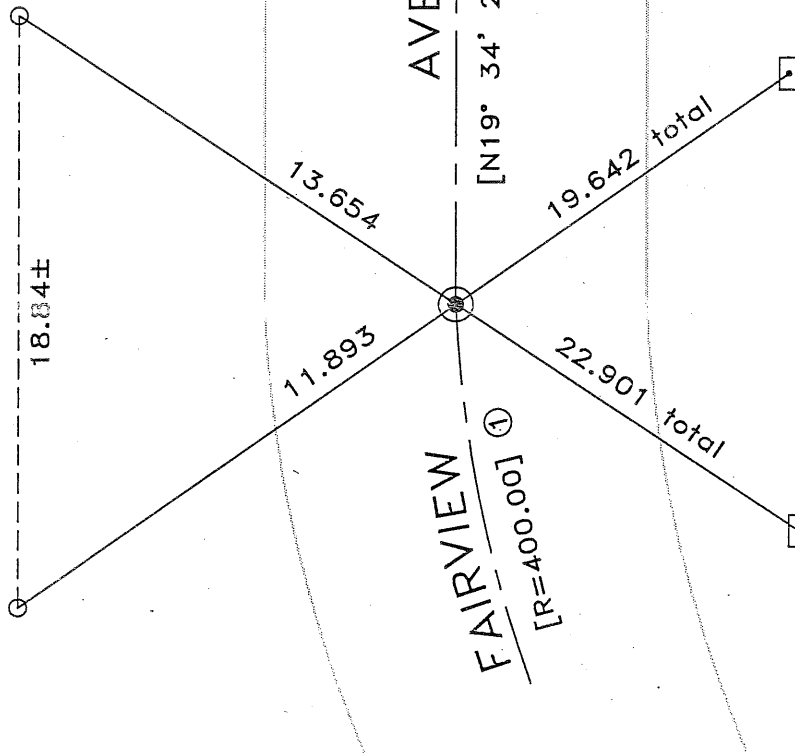
YP26L3



27.41 S'y of
 JP #8358
 and 0.60 E'y
 of temporary
 wire fence

address #26355

28.59 NE'y
 of JP #8359
 and 0.68
 E'y of
 temporary
 wire fence



34.00 S'y
 of Ped
 Xing sign
 and 0.90
 E'y from
 toe of road

12.00 S'y
 of set hub
 and tack

LEGEND

- ⊙ FOUND STANDARD ALAMEDA COUNTY MONUMENT WITH PIN
 IN CONCRETE POST IN MONUMENT WELL
- SET 60 PENNY NAIL
- SET STAKE AND TACK

[XXXX] NON-VERIFIED RECORD DIMENSION IN FEET

REFERENCE(S)

- ① CASTLE HOMES, RECORD OF SURVEY 7(A), BOOK 2, pages 53-57