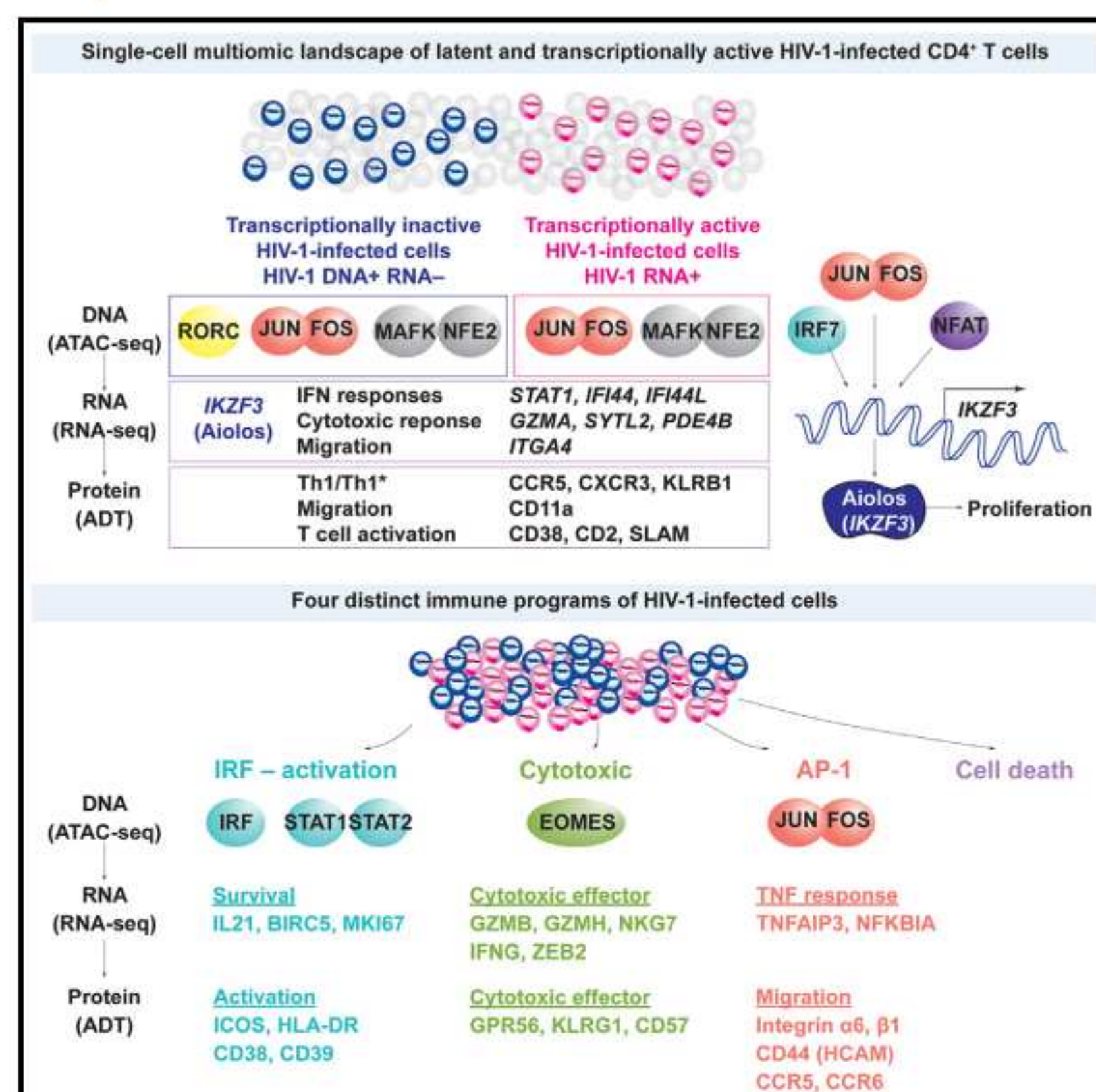


Single-cell epigenetic, transcriptional, and protein profiling of latent and active HIV-1 reservoir revealed that *IKZF3* promotes HIV-1 persistence

Graphical abstract



Authors

Yulong Wei, Timothy C. Davenport, Jack A. Collora, ..., Ricardo Alfaro, Ann Duerr, Ya-Chi Ho

Correspondence

ya-chi.ho@yale.edu

In brief

HIV-1 latently infected cells are indistinguishable from uninfected cells, creating a barrier for cure. Using DOGMA-seq, Wei et al. identified single-cell epigenetic, transcriptional, and surface protein states of latent and transcriptionally active HIV-1-infected cells. The heterogeneous HIV-1-infected cells are driven by interferon responses, cytotoxic T cell differentiation, AP-1-driven TNF responses, and cell death. *IKZF3* promotes the proliferation of HIV-1-infected cells.

Highlights

- Single-cell multiomics captures *in vivo* states of HIV-1 DNA⁺ and HIV-1 RNA⁺ cells
- HIV-1 latently infected cells are distinct at the DNA, RNA, and protein levels
- HIV-1-infected cells have four distinct states: IRF, cytotoxic, AP-1, and cell death
- *IKZF3* (Aiolos) promotes the proliferation of HIV-1-infected cells

Article

Single-cell epigenetic, transcriptional, and protein profiling of latent and active HIV-1 reservoir revealed that *IKZF3* promotes HIV-1 persistence

Yulong Wei,¹ Timothy C. Davenport,¹ Jack A. Collora,¹ Haocong Katherine Ma,¹ Delia Pinto-Santini,² Javier Lama,³ Ricardo Alfaro,⁴ Ann Duerr,² and Ya-Chi Ho^{1,5,*}

¹Department of Microbial Pathogenesis, Yale University School of Medicine, New Haven, CT 06519, USA

²Vaccine and Infectious Disease, Fred Hutchinson Cancer Research Center, Seattle, WA 98109, USA

³Asociación Civil Impacta Salud y Educación, Lima 15063, Perú

⁴Centro de Investigaciones Tecnológicas Biomédicas y Medioambientales (CITBM), Lima 07006, Perú

⁵Lead contact

*Correspondence: ya-chi.ho@yale.edu

<https://doi.org/10.1016/j.immuni.2023.10.002>

SUMMARY

Understanding how HIV-1-infected cells proliferate and persist is key to HIV-1 eradication, but the heterogeneity and rarity of HIV-1-infected cells hamper mechanistic interrogations. Here, we used single-cell DOGMA-seq to simultaneously capture transcription factor accessibility, transcriptome, surface proteins, HIV-1 DNA, and HIV-1 RNA in memory CD4⁺ T cells from six people living with HIV-1 during viremia and after suppressive antiretroviral therapy. We identified increased transcription factor accessibility in latent HIV-1-infected cells (RORC) and transcriptionally active HIV-1-infected cells (interferon regulatory transcription factor [IRF] and activator protein 1 [AP-1]). A proliferation program (*IKZF3*, *IL21*, *BIRC5*, and *MKI67* co-expression) promoted the survival of transcriptionally active HIV-1-infected cells. Both latent and transcriptionally active HIV-1-infected cells had increased *IKZF3* (Aiolos) expression. Distinct epigenetic programs drove the heterogeneous cellular states of HIV-1-infected cells: IRF:activation, Eomes:cytotoxic effector differentiation, AP-1:migration, and cell death. Our study revealed the single-cell epigenetic, transcriptional, and protein states of latent and transcriptionally active HIV-1-infected cells and cellular programs promoting HIV-1 persistence.

INTRODUCTION

Despite suppressive antiretroviral therapy (ART), HIV-1-infected cells persist lifelong.^{1–3} During viremia, most HIV-1-infected cells undergo productive infection with active HIV-1 gene expression. Presumably, transcriptionally active HIV-1-infected cells should die of viral cytopathic effects or immune clearance. However, some transcriptionally active HIV-1-infected cells can survive, proliferate, and persist.⁴ Understanding how HIV-1-infected cells proliferate and persist is key to HIV-1 eradication.

It is believed that CD4⁺ T activation cells support HIV-1 reactivation while resting CD4⁺ T cells maintain HIV-1 latency because of low expression or lack of active forms of transcription factors in the nucleus. However, CD4⁺ T cell differentiation, polarization, migration, and exhaustion states are heterogeneous and complex, far beyond the simplified dichotomous classification of activated versus resting states. Identification of diverse signatures for HIV-1-infected cells,^{5–13} such as different markers for activation,¹⁴ exhaustion,¹⁵ migration,^{7,16} T helper 1 (Th1) polarization,^{12,17} cytotoxic T cell polarization,^{11,13} or T follicular helper (Tfh) differentiation,^{12,16} indicates the profound heterogeneity of HIV-1-infected cells and likely reflects the heterogeneous cellular states of

CD4⁺ T cells. Understanding the heterogeneity of HIV-1-infected cells requires comprehensive genome-wide profiling to identify the epigenetic and transcriptional programs that govern CD4⁺ T cell differentiation and their impact on HIV-1 persistence.

The activation, proliferation, and differentiation of memory T cells are orchestrated by key transcription factors. Acute viral infection triggers type I interferon (IFN) response through IFN regulatory transcription factors (IRFs) that shape T cell differentiation.^{18,19} Transcription factors, such as activator protein 1 (AP-1: JUN, FOS, and BATF),^{5,20,21} cap'n'collar (CNC: BACH1, BACH2, and NFE2) family transcription factors,^{22,23} and Maf²⁴ orchestrate the development of adaptive immune responses. Master transcription factors guide T cell polarization and commitment, such as Tbet (*TBX21*) and Eomesdermin (*EOMES*) for Th1 and cytotoxic effector differentiation²⁵ and RORγt (*RORC*) for T helper 17 (Th17) differentiation.²⁶ Understanding epigenetic and transcriptional programs that govern cell states of HIV-1-infected cells will reveal new mechanisms of HIV-1 persistence.

The development of HIV-1 cure strategies relies on identifying cellular markers that can distinguish HIV-1-infected cells from uninfected cells. In particular, latently infected cells do not

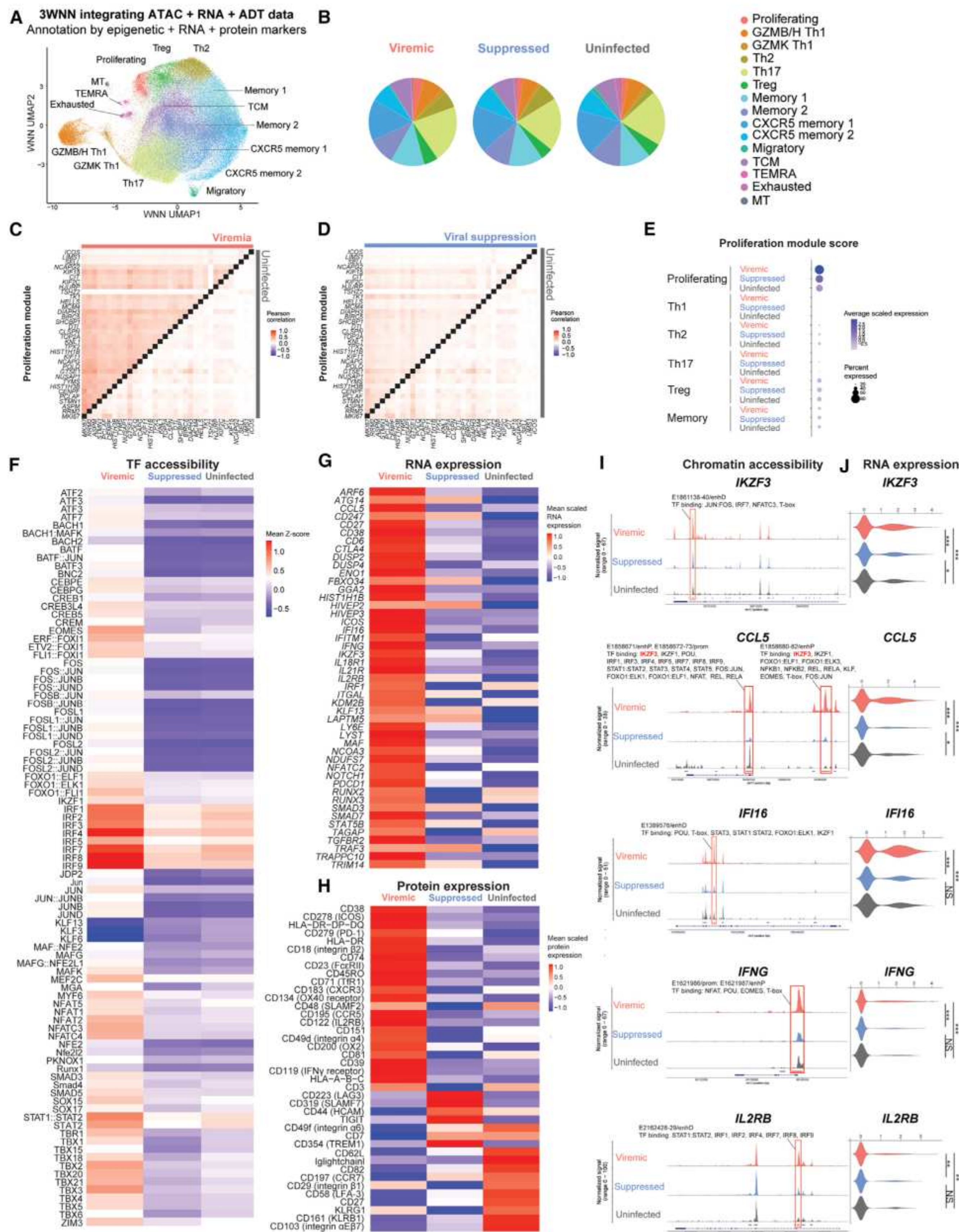


Figure 1. Single-cell DOGMA-seq captures the heterogeneous epigenetic, transcriptional, and surface protein states of memory CD4⁺ T cells during HIV-1 infection

(A) Harmonized WNN UMAP projection of memory CD4⁺ T cells identified by cell-to-cell multimodal neighbors (weighted combination of ATAC, RNA, and ADT data similarities) ($n = 93,209$ cells, including 25,778, 56,771, and 10,660 cells in the viremic, viral suppression, and uninfected conditions, respectively).

(legend continued on next page)

express HIV-1 viral proteins and cannot be distinguished from uninfected cells. Technology advancement allows capture of rare HIV-1-infected cells (<0.1% in the CD4⁺ T cells in peripheral blood) for single-cell profiling.^{5–13} Using HIV-1 RNA expression as a surrogate for transcriptionally active HIV-1-infected cells, single-cell transcriptional profiling of transcriptionally active HIV-1 RNA⁺ cells revealed HIV-1 persistence in cytotoxic CD4⁺ T cells.^{11,13} However, single-cell transcriptome profiling of transcriptionally inactive HIV-1 RNA[−] infected cells remains a major challenge: no study was able to capture the single-cell transcriptional landscape of transcriptionally inactive infected cells for genome-wide examination.

Here, we examined the epigenetic, transcriptional, and surface protein expression of transcriptionally inactive (HIV-1 DNA⁺ RNA[−]) and transcriptionally active (HIV-1 RNA⁺) HIV-1-infected memory CD4⁺ T cells from six people living with HIV-1 during viremia and after suppressive ART. Using DOGMA-seq,²⁷ we identified chromatin-accessible transcription factor-binding regions by assay for transposase-accessible chromatin with sequencing (ATAC-seq), transcriptional programs by RNA sequencing (RNA-seq), and cell surface protein expression by antibody-derived tag (ADT) sequencing for 156 surface proteins within the same single cells. We identified that transcription factor Aiolos (encoded by *IKZF3*) may promote proliferation of HIV-1-infected cells and found that the heterogeneous HIV-1 was driven by IFN responses, cytotoxic T cell differentiation, and AP-1-driven TNF responses. This study represents the first single-cell high-dimensional mapping of the epigenetic, transcriptional, and surface protein expression landscapes of transcriptionally inactive and active HIV-1-infected cells.

RESULTS

Single-cell DOGMA-seq captured epigenetic, transcriptional, and surface protein states of memory CD4⁺ T cells during HIV-1 infection

Paired memory CD4⁺ T cells from six people living with HIV-1 in the Sabes cohort^{28,29} recruited in a previous study¹³ during viremia (average 31 days from estimated date of detectable

infection) and after 1 year of suppressive ART were profiled by DOGMA-seq.²⁷ Memory CD4⁺ T cells from four age, sex, and ethnicity-matched uninfected individuals were new to this study and served as controls (Table S1). Briefly, we used DOGMA-seq to simultaneously capture chromatin accessibility landscape and HIV-1 DNA (from ATAC-seq), cellular transcriptome and HIV-1 RNA (from RNA-seq), and 156 surface proteins (ADT sequencing) in the same single cells (Figure 1A). After removing low-quality cells, we captured 93,209 single cells (25,778 in viremia, 56,771 in viral suppression, and 10,660 in uninfected controls) (Table S2). Batch effects were corrected by Harmony (for RNA-seq), reciprocal latent semantic indexing (rLSI) (for ATAC-seq), and reciprocal principal-component analysis (rPCA) (for ADT). Cells formed distinct clusters by epigenome (ATAC-seq) (Figure S1A), transcriptome (RNA-seq) (Figure S1B), and surface protein (ADT) (Figure S1C) profiles. A weighted combination of ATAC-seq, RNA-seq, and ADT profiles allowed for an integrated view of the epigenetic regulators, transcriptional program, and surface protein expression within the same single cells on a harmonized weighted nearest neighbor (WNN) uniform manifold approximation and projection (UMAP) for dimension reduction³⁰ plot (Figures 1A, S1D, and S1E). No apparent batch effect was present after integration (Figure S1F). Although ATAC-seq identified cell-type-specific transcription factor accessibility (Figures S1A and S1G), RNA-seq identified cell-type-specific transcriptome (Figures S1B and S1H), and ADT identified surface protein expression profiles (Figures S1C and S1I), integrating all three modalities more faithfully depicted the heterogeneous T cell differentiation states (Figure 1A). We identified 15 memory CD4⁺ T cell subsets (clusters) (Figures 1B and S1G–S1I; Table S2). Per cell, we identified a median of 785 genes, 1,553 RNA unique molecular identifiers (UMIs), 62 surface proteins, 700 ADT UMIs, 3,143 unique ATAC fragments, and 4,198 ATAC UMIs (Table S2).

Acute HIV-1 infection increases *IKZF3* expression in proliferating cells

We first examined how acute HIV-1 infection shaped the epigenetic, transcriptional, and protein expression states of memory

(B) Pie charts indicating cell subset distributions in viremia, viral suppression, and uninfected conditions.

(C and D) Heatmap comparisons of pairwise gene expression Pearson's correlation coefficient, for the proliferation gene program identified by WGCNA. The proliferation gene program was identified by WGCNA using top 50 genes most positively and negatively associated with the first 7 principal components in the transcriptional profiles of 25,778 cells in viremia. $p < 0.05$ for at least 95% Wilcoxon rank-sum tests against 10,000 random module permutations.

(E) Proliferation gene program module score per cell subset and infection condition.

(F) Chromatin accessibility of transcription factor-binding motifs in proliferating cluster cells grouped by conditions, represented in heatmap as comparisons of group means in ATAC-seq chromVAR bias-corrected deviations (Z score). All motifs shown had significantly increased accessibility ($p < 0.05$ and mean Z score difference ≥ 0.3).

(G) Genes differentially expressed in proliferating cluster cells, represented in heatmap as comparisons of group means in normalized and scaled RNA expression. All genes passed $p < 0.05$ in viremic, minimum percent of cells expressing the feature (min.pct) ≥ 0.1 , \log_2 -fold change (\log_2 FC) ≥ 0.25 .

(H) Surface proteins differentially expressed in proliferating cluster cells, represented in heatmap as comparisons of group means in DSB (denoised and scaled by background)-normalized and scaled protein expression. All features passed $p < 0.05$ and \log_2 FC ≥ 0.25 . The mean expression of all protein features shown were also tested to be greater than the mean expression of their specific isotype controls in cells from the proliferating cluster ($Z > 2$; two-sample Z test). For all heatmaps, $n = 1,073, 1,373, 281$ proliferating cells in the viremic, viral suppression, and uninfected conditions, respectively. Statistical significance for heatmaps was determined by Wilcoxon rank-sum test for comparisons between each group and all cells in the other two groups. All p values were false discovery rate (FDR)-adjusted using the Benjamini-Hochberg procedure.

(I and J) Matching increase in chromatin accessibility and scaled gene expression at *IKZF3*, *CCL5*, *IFI16*, *IFNG*, and *IL2RB* in proliferating cells in viremia. (I) Highlighted red on the genome track corresponds to significantly differentially accessible peaks called by MACS3 (FDR-adjusted $p < 0.05$, min.pct ≥ 0.05 , \log_2 FC ≥ 0.15) (see Figure S2) that overlap with candidate *cis*-regulatory elements as predicted by ENCODE Registry of candidate *cis*-regulatory elements (cCREs). All transcription factors were identified using the JASPAR2022 Core Vertebrates collection, with binding confidence of $p < 0.05$ by position weight matrix scan (PWMScan). (J) The corresponding RNA expression of genes. * $p < 0.05$, ** $p < 0.01$, *** $p < 0.001$, Wilcoxon rank-sum test. See also Figures S1–S4.

CD4⁺ T cells (Figure S2). Chromatin accessibility of binding motifs was significantly enriched for AP-1 family transcription factors (JUN, FOS, and BATF), CNC family transcription factors (including four transcription activators [NF-E2 and NF-E2 like 1, 2, 3] and two repressors [BACH1 and BACH2]), and Maf during viremia (Figure S2A). The significantly upregulated genes were type I IFN response genes (*ISG15*, *IFI44*, *IFI44L*, *MX2*, and *TRIM22*), *PDE4B* (which promotes cytokine interleukin [IL]-2 production),³¹ and *SYTL2* (encoding Slp-2 for lytic granule secretion)³² during viremia (Figure S2B). The significantly upregulated surface proteins during viremia were of T cell activation (CD38, major histocompatibility complex (MHC) class II (HLA-DP, -DQ, -DR), ICOS, SLAMF2, CD74, CD134, CD2, CD3, and CD101), immune checkpoint (PD-1), Th1 polarization (CXCR3³³ and CCR5³⁴), cytotoxic T cell differentiation (KLRG1 and GPR56), migration (integrin α 1, α 4, and β 1), and anti-inflammatory Treg pathways (CD39 and CD73)³⁵ during viremia (Figure S2C).

To identify distinct gene programs that were induced during viremia *de novo*, we performed weighted gene correlation network analysis (WGCNA)³⁶ to identify genes that are highly co-expressed in cells in viremia but not in viral suppression and uninfected conditions. WGCNA discovers sets of coregulated genes that may be coregulated as they are determined to be pairwise correlated.³⁷ Among five statistically significant gene modules identified by WGCNA in viremia (Table S2), the proliferation gene program revealed co-expression of the proliferation gene *MKI67*, cell survival gene *BIRC5* (Survivin),³⁸ and T cell activation gene *ICOS*. To contrast the degree to which RNA expression was correlated among genes identified in the proliferation gene program, Pearson's correlation coefficients for gene pair RNA expression were visualized and compared in heatmap (Figures 1C and 1D). Indeed, genes in the proliferation program had higher RNA co-expression in viremia in comparison with viral suppression and uninfected conditions. To verify that the proliferation gene program was most enriched in the proliferating cluster during viremia, the normalized per-cell averaged RNA expression for the proliferation gene program (module score, see STAR Methods) was measured as a score of gene program enrichment. Indeed, the proliferation gene program scores were overall higher in viremia than in viral suppression and uninfected conditions in the proliferating cluster (Figures 1E, S3A, and S3B).

We next focused on the proliferating cluster to determine the cellular states of proliferating T cells during in HIV-1 infection versus uninfected condition (Figures 1F–1H). We first identified transcription factors having binding motifs that were enriched in inaccessible chromatin. During viremia, accessibility of transcription factors of type I IFN responses (IRF and STAT1/STAT2), T cell activation (AP-1 [JUN, FOS, and BATF], NFAT), effector differentiation (TBX21 and Eomes), and memory development (FOXO1) were all enriched (Figure 1G). Comparing proliferating versus all other clusters, accessibility of IRFs (STAT1/STAT2) was the most prominently enriched (Figures S3C and S3D).

To determine which genes were epigenetically regulated by transcription factors that had enriched binding motif chromatin accessibility during viremia in proliferating cells, we identified gene regions that had significantly increased chromatin accessibility (ATAC peaks) and overlapped with The Encyclopedia of

DNA Elements (ENCODE) candidate *cis*-regulatory elements (cCREs) (Figures 1I and S3E; Table S2) and increased RNA expression (Figures 1G and 1J) in the proliferating cluster in viremia, and the corresponding transcription factor binding motifs that were present in these regions of increased accessibility (Figure 1I). Examples were T cell differentiation genes (*IKZF3*, *CCL5*, and *IFNG*), type I IFN response gene (*IFI16*), and T cell proliferation gene (*IL2RB*). For instance, *IKZF3* (encoding Aiolos, an Ikaros zinc-finger family transcription factor that regulates lymphocyte proliferation and differentiation)³⁹ accessibility was increased in viremia at a putative regulatory element (identified as an open chromatin ATAC peak) (Figure 1I). Motifs found in this highly accessible footprint bind to IRF7, JUN:FOS, NFAT, and T-box transcription factors, all of which had enriched binding motif accessibility in the proliferating cluster in viremia (Figure 1F). Consistent with increased chromatin accessibility, *IKZF3* had increased RNA expression in the proliferating cluster (Figure 1J). To provide a more direct demonstration of the relationships shown between chromatin accessibility at the highlighted cCRE (Figure 1I) and RNA expression (Figure 1J), we found that *IKZF3* RNA⁺ cells had increased chromatin accessibility at the *IKZF3* gene than *IKZF3* RNA[−] cells in the proliferating cluster (Figure S4A). Similarly, *CCL5* RNA⁺ cells had increased chromatin accessibility at the *CCL5* gene, *IFI16* RNA⁺ cells had increased chromatin accessibility at the *IFI16* gene, *IFNG* RNA⁺ cells had increased chromatin accessibility at the *IFNG* gene, and *IL2RB* RNA⁺ cells had increased chromatin accessibility at the *IL2RB* gene. Importantly, ATAC peaks that had increased chromatin accessibility (highlighted in red in Figures S4A–S4E) shared the same gene coordinates as significantly differentially accessible peaks identified in Figure 1I. Together, these results suggest that type I IFN response, T cell differentiation, and proliferation may be epigenetically upregulated during viremia in proliferating cells.

We identified a relationship between Aiolos (*IKZF3*) binding at *CCL5* locus and *CCL5* expression in proliferating cells. First, we found that Aiolos binding motif in the *CCL5* cCREs had increased chromatin accessibility in viremia (Figure 1I, peaks highlighted red). Second, the same *CCL5* cCREs had increased chromatin accessibility in proliferating cells that were enriched in Aiolos binding motif accessibility (*IKZF3* chromatin variation across regions [chromVARs] Z score > 0) in comparison with proliferating cells that were low in Aiolos binding motif accessibility (*IKZF3* chromVAR Z score < 0) (Figure S4F). Third, proliferating cells that were enriched in Aiolos binding motif accessibility had upregulated *CCL5* expression in comparison with proliferating cells that were low in Aiolos binding motif accessibility (Figure S4G). Finally, a differential transcription factor binding motif accessibility (chromVAR) analysis between *CCL5*⁺ proliferating cells and *CCL5*[−] proliferating cells revealed that *IKZF3* had significantly increased global accessibility in cells that were *CCL5*⁺. We noted that, in addition to Aiolos, AP-1, IRF, STAT1:STAT2, and T-box family transcription factors may also bind at *CCL5* cCREs (Figure 1I). In addition to *CCL5*, we also identified Aiolos binding motif in significantly differentially accessible ATAC peaks in several gene loci (see Table S2 for annotated cCREs and binding transcription factors for differentially accessible ATAC peaks shown in Figure S3E, and the corresponding gene expression and protein expression fold changes).

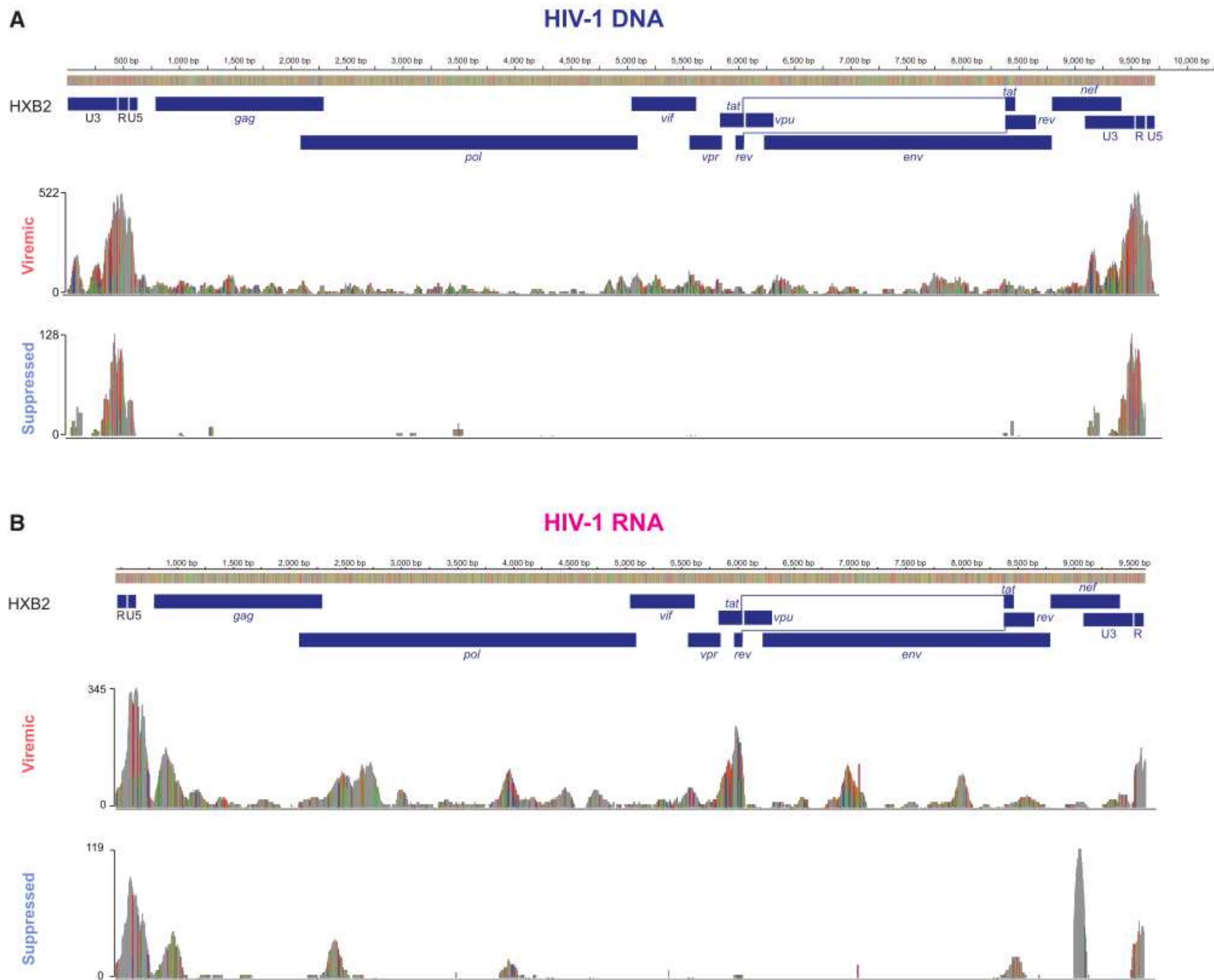


Figure 2. HIV-1 proviral and viral genome landscape captured by DOGMA-seq

Integrative genomics viewer (IGV) plots of HIV-1 DNA⁺ reads (A) and of HIV-1 RNA⁺ reads (B) mapped to HXB2 reference genome and autologous HIV-1 sequences. See also Figures S5.

To identify immune pathways that were induced during viremia in proliferating cells, we identified significantly upregulated genes in viremia in the proliferating cluster (Figure 1G). We found increased expression of type I IFN response gene (*IFI16*), T cell differentiation genes (*IKZF3*, *CCL5*, and *IFNG*), and T cell proliferation gene (*IL2RB*) during viremia but not in viral suppression, in agreement with gene ontology analysis (Figures S3F and S3G). Using significantly downregulated genes, gene ontology revealed a downregulated response to virus and type I IFN response in viral suppression in the proliferating cluster (Table S2). In agreement with above, gene set enrichment analysis (GSEA) revealed enrichment of type I IFN responses (Figure S3H) and Th1 polarization (Figure S3I; including *SERPINB9*, a granzyme B inhibitor) during viremia in proliferating cells.

Finally, differential surface protein expression analysis revealed significant upregulation of markers of activation, Th1 polarization (CXCR3, CCR5, and CD119 [IFN γ receptor]), and T cell migration (integrin $\alpha 4$ and integrin $\beta 2$) (Figure 1H) during viremia in proliferating CD4⁺ T cells. Of note, *IL2RB* had consistently

higher chromatin accessibility (Figures 1I and S3E), higher RNA expression (Figures 1G and 1J), and higher surface protein expression (Figure 1H) in proliferating cells during viremia versus viral suppression and uninfected conditions.

Single-cell DOGMA-seq identified the cellular states of transcriptionally inactive and transcriptionally active HIV-1-infected cells

To examine the epigenetic, transcriptional, and protein expression differences between HIV-1-infected cells versus uninfected cells, we mapped ATAC-seq reads and RNA-seq reads to HXB2 HIV-1 reference genome and to autologous virus (Figure 2) to identify HIV-1 DNA⁺ cells and HIV-1 RNA⁺ cells, respectively. Of note, HIV-1 DNA⁺ cells can be transcriptionally silent or have low HIV-1 RNA expression below the detection limit.

To define the sensitivity of HIV-1 DNA detection, we mapped HIV-1 DNA from a separate DOGMA-seq dataset that we recently described.^{40–42} Of 14,780 cells from HIV-1-infected, stably integrated Jurkat cell lines, each have known HIV-1

integration sites,^{10,41,42} we identified 5,220 HIV-1 DNA⁺ cells (35.32% sensitivity) at 1 read per cell threshold and 4,197 HIV-1 DNA⁺ cells (28.40% sensitivity) at 2 reads per cell threshold. Despite the fact that these HIV-1-infected Jurkat cells had active HIV-1 expression and high chromatin accessibility at the HIV-1 provirus,⁴⁰ the detection of HIV-1 DNA remained low (28.4%). We anticipated that using ATAC-seq to detect HIV-1 DNA in HIV-1-infected cells in the clinical samples may be even lower. Given the small proportion of the $\sim 9,719$ bp HIV-1 genome among the 6×10^9 bp for the diploid human genome, an integrated HIV-1 proviral genome only accounted for 0.00016% of the human genome in one infected cell. Given that each infected cell has only one copy of HIV-1 proviral DNA but many copies of HIV-1 RNA, we expected to identify HIV-1 RNA⁺ cells with no detectable HIV-1 DNA (not captured by ATAC-seq). In addition, HIV-1 may integrate into low accessible heterochromatin, which would not be captured by ATAC-seq. To define the sensitivity of HIV-1 RNA detection using DOGMA-seq, a threshold of 2 HIV-1 RNA reads among a mean of 48,223 total RNA reads captured per cell from the HIV-1⁺ participants indicated that if 0.004% of cellular RNA reads were HIV-1 reads then the cell would be detected as HIV-1⁺.

To increase the specificity of HIV-1 genome mapping and guard against potential sequencing artifacts, HIV-1⁺ cells were defined by the presence of ≥ 2 reads of HIV-1 RNA or HIV-1 DNA or both per cell (Table S3). This threshold yielded no HIV-1 RNA⁺ cells or HIV-1 DNA⁺ cells in samples from four uninfected participants ($n = 10,660$) or from uninfected Jurkat cells ($n = 9,560$). Given the rarity of HIV-1-infected cells ($\sim 879/10^6$, 0.09%) during viremia,⁴³ the false negative rate (HIV-1 DNA⁺ and HIV-1 RNA⁺ cells actually being an HIV-1-infected cell) was $< 0.1\%$.

Per participant, we identified 1.19%–3.07% of memory CD4⁺ T cells in viremia (Figure S5A; Table S3) and 0.02%–0.06% in viral suppression were HIV-1-infected (Figure S5B; Table S3). No HIV-1-infected cells were detected in uninfected controls (Figure S5C; Table S3). We defined HIV-1 DNA⁺ RNA[−] cells as HIV-1 DNA⁺ cells that had undetectable HIV-1 expression (transcriptionally inactive HIV-1-infected cells). We combined HIV-1 DNA[−] RNA⁺ cells with HIV-1 DNA⁺ RNA⁺ cells and defined them as HIV-1 RNA⁺ cells (transcriptionally active HIV-1-infected

cells). In total, we identified 233 HIV-1 DNA⁺ RNA[−] cells (0.90%) and 256 HIV-1 RNA⁺ cells (0.99%) (including 218 HIV-1 DNA[−] RNA⁺ cells [0.85%] and 38 HIV-1 DNA⁺ RNA⁺ cells [0.15%]) in viremia (Figure 3A), and 19 HIV-1 DNA⁺ (0.03%) and 14 HIV-1 RNA⁺ cells (0.02%) (including 11 HIV-1 DNA[−] RNA⁺ cells [0.02%] and 3 HIV-1 DNA⁺ RNA⁺ RNA[−] cells [0.005%]) in viral suppression (Figure 3B). Pooled HIV-1 DNA⁺ cells and HIV-1 RNA⁺ cells were distributed across different memory CD4⁺ T cell subsets without clear bias in cell-type compositions when compared with HIV-1[−] cells (Figure 3C). In addition, no significant bias was observed in the numbers of HIV-1 RNA reads recovered in HIV-1 RNA⁺ cells per cell type (Figures S5D and S5E). Of note, we sequenced on average 50,131 ATAC read pairs and 48,223 RNA read pairs per cell and reached sequencing saturation across 10 \times runs (Figure S5F). Most HIV-1 DNA reads were captured within the HIV-1 long terminal repeat (LTR) promoter (Figure 2) and reflected increased chromatin accessibility at HIV-1 promoter than protein-coding regions.⁴⁰ Between participants, no notable differences were observed in the HIV-1 genome mapping (Figures S5G–S5J).

RORC, BACH2, and Maf transcription factors shaped transcriptionally inactive HIV-1-infected cells, whereas AP-1, IRF, BACH2, and Maf shaped transcriptionally active HIV-1-infected cells

We first examined the epigenetic landscape of HIV-1-infected cells (Figures 3D–3F). During viremia, binding motifs for retinoid acid-related (RAR) orphan receptors (*RORB* and *RORC*, encoding ROR β and ROR γ t) had significantly increased chromatin accessibility in HIV-1 DNA⁺ cells (Figures 3D and 3F). Notably, ROR γ t (encoded by *RORC*) is a master transcription factor that drives Th17 differentiation. We then compared the transcription factor binding potential of HIV-1 RNA⁺ cells versus uninfected cells. We found that the binding motifs of AP-1 (JUN, FOS, and BATF), the CNC family (NFE2L2, BACH1, and BACH2), Maf, and IRF transcription factors were prominently enriched in accessible chromatin of HIV-1 RNA⁺ cells (Figures 3E and 3F). Similarly, HIV-1 DNA⁺ cells also had enriched AP-1, CNC, and Maf transcription factor-binding motif accessibility but to a lesser extent than HIV-1 RNA⁺ cells (Figure 3F). Of note, these were the same transcription factors that had enriched chromatin accessibility in

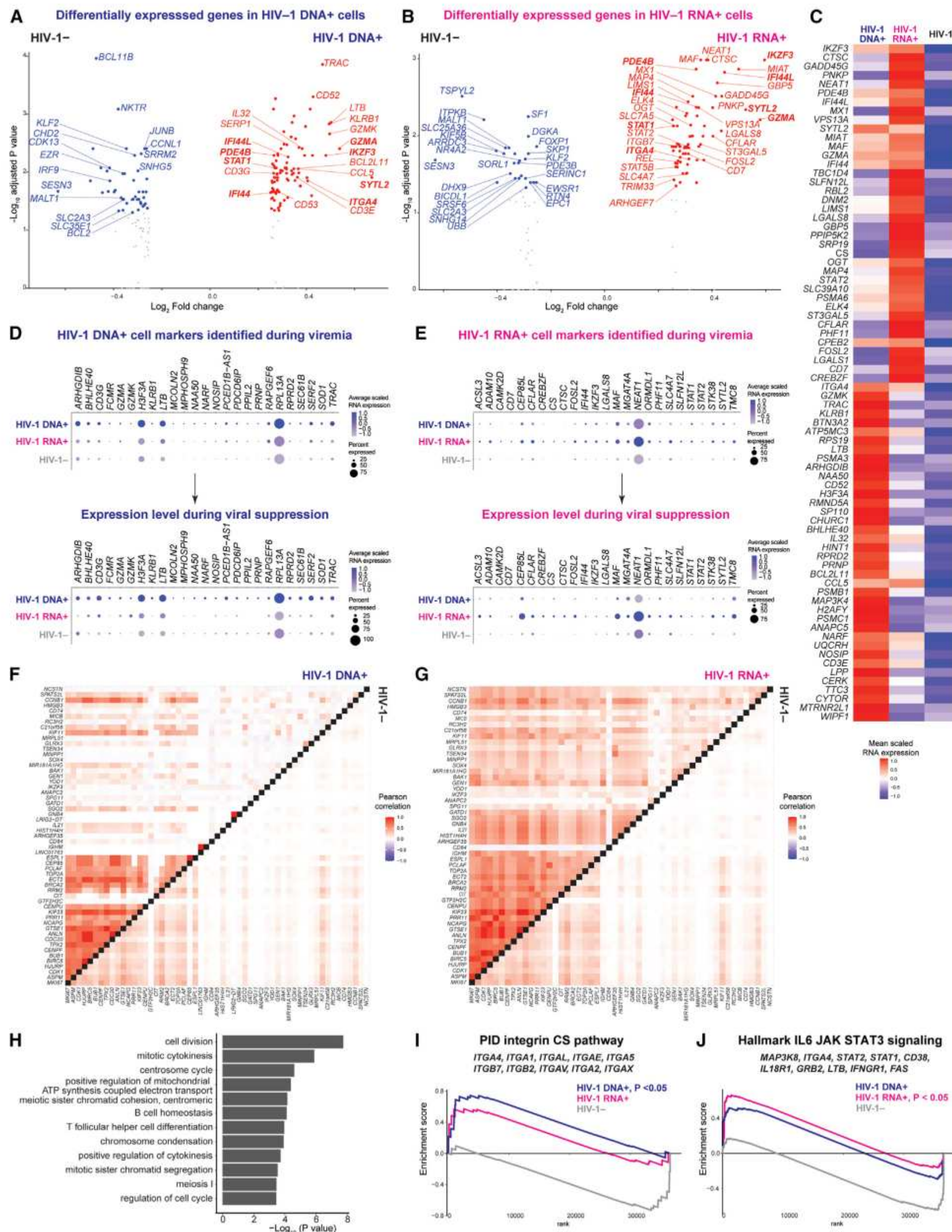
Figure 3. Single-cell DOGMA-seq captures transcriptionally inactive HIV-1-infected cells (HIV-1 DNA⁺ HIV-1 RNA[−]) and transcriptionally active HIV-1-infected cells (HIV-1 RNA⁺) and their respective epigenetic landscape

(A and B) HIV-1 DNA⁺ cells and HIV-1 RNA⁺ cells were identified by mapping ATAC-seq and RNA-seq reads, respectively, to autologous HIV-1 and HXB2 reference sequences. An HIV-1-infected cell was defined as having at least 2 HIV-1 reads per barcode to guard against index hopping and sequencing artifacts. The Venn diagrams were drawn to scale with intersection depicting the subset of HIV-1-infected cells that are HIV-1 DNA⁺ RNA⁺ (light pink). For all downstream figures, HIV-1⁺ DNA⁺ RNA[−] cells were termed HIV-1 DNA⁺ cells (blue) while HIV-1 DNA[−] RNA⁺ cells and HIV-1 DNA⁺ RNA⁺ cells were merged and termed HIV-1 RNA⁺ cells (pink).

(C) Pie charts indicating cell subset distributions.

(D and E) Volcano plots indicating transcription factors binding motifs having increased global chromatin accessibility (measured by chromVAR bias-corrected deviations) between HIV-1 DNA⁺ cells ($n = 233$) and HIV-1[−] cells ($n = 2,238$) in viremia (D) and between HIV-1 RNA⁺ cells ($n = 256$) and HIV-1[−] cells ($n = 2,238$) in viremia (E).

(F) Global chromatin accessibility of transcription factor-binding motifs in HIV-1 DNA⁺ cells and in HIV-1 RNA⁺ cells, with respect to each other and to HIV-1[−] cells, in viremia, represented in heatmap as comparisons of group means in chromVAR bias-corrected deviations (Z score). All motifs shown had significantly increased accessibility ($p < 0.05$ and mean Z score difference ≥ 0.2). All volcano plots and heatmap showed comparisons for viremia ($n = 233$, 256, 2,238 cells in HIV-1 DNA⁺, HIV-1 RNA⁺, and HIV-1[−]). Statistical significance for heatmaps was determined by Wilcoxon rank-sum test for comparisons between each group and all cells in the other two groups. For fair comparisons between groups in volcano plots and heatmap, HIV-1[−] cells were downsized to match the same number of cells in HIV-1⁺ groups with 1,000 bootstrap replicates. The 1,000 p values were transformed to follow a standard Cauchy distribution and a combined p value was calculated as the weighted sum of Cauchy transformed p values, followed by correction for multiple comparisons using the Benjamini-Hochberg (FDR) procedure. See also Figure S7.



(legend continued on next page)

memory CD4⁺ T cells during viremia (Figure S2A). Overall, binding motifs of AP-1, CNC, Maf, and IRF family transcription factors had enriched accessibility in HIV-1-infected cells, whereas accessibility of ROR β and ROR γ t transcription factor-binding motifs were additionally enriched in HIV-1 DNA⁺ cells.

Transcription factor *IKZF3* was associated with the survival and proliferation of transcriptionally active HIV-1-infected cells

To identify the transcriptional landscape of HIV-1-infected cells, we identified significantly upregulated genes in these cells versus HIV-1[−] cells during viremia (Figures 4A–4C). We identified 19 genes that were significantly upregulated in both HIV-1 DNA⁺ cells and HIV-1 RNA⁺ cells (Table S2). Among them, eight genes were closely associated with T cell differentiation: a lymphocyte differentiation gene (*IKZF3*, encoding transcription factor Aiolos), three type I IFN response genes (*STAT1*, *IFI44*, and *IFI44L*), two cytotoxic T cell effector genes (*GZMA*, *SYTL2* [mediating lytic granule secretion]⁴⁴), one T cell activation gene (*PDE4B* mediating IL-2 production),³¹ one T cell migration gene (*ITGA4*) (Figures 4A and 4B). Of note, *IKZF3* was also upregulated in the proliferating cells (Figure 1G).

We noted that many HIV-1⁺ cells were recovered in the Th17 cluster during viremia (Figures 3C and S5A). To examine whether the significantly upregulated genes identified in HIV-1⁺ cells versus HIV-1[−] cells were driven by HIV-1 enrichment in specific cell subsets such as Th17, we examined the RNA expression for the eight key genes described above (*IKZF3*, *STAT1*, *IFI44*, *IFI44L*, *GZMA*, *SYTL2*, *PDE4B*, and *ITGA4*) in the 15 cell clusters in viremia (Figure S6A). We found that the RNA expressions of these genes were not significantly higher in Th17 in comparison with other clusters, albeit Th17 cells harbored the largest number of HIV-1[−] and HIV-1⁺ cells (Figures S6B and S6C; Table S3), suggesting that Th17 cellular RNA profile was not the dominant contributor of the transcriptional profile of HIV-1⁺ cells.

In HIV-1 DNA⁺ cells, the upregulated genes were involved in cytotoxic T cell differentiation (*GZMA*, *GZMK*, *KLRB1*, *CCL5*, and *LTB*) and T cell migration (*ITGA4*, T cell homing integrin α 4) (Figure 4A), consistent with previous finding of enrichment of HIV-1-infected cells in cytotoxic CD4⁺ T cells^{11,13} and migratory cells.^{7,16,45} In HIV-1 RNA⁺ cells, the upregulated genes included cytotoxic T cell differentiation (*GZMA* and *CTSC* [en-

coding cathepsin C]), T cell migration (*ITGA4* and *ITGB7* [integrin β 7]), type I IFN responses (*STAT1*, *STAT2*, and *MX1*), T cell differentiation transcription factors (*FOSL2*, *REL*, *MAF*, and *STAT5B*), and a cell survival gene (*CFLAR*, encoding c-FLIP that prevents T cell death) (Figure 4B). Gene ontology analysis of significantly upregulated genes showed that HIV-1 DNA⁺ cells were enriched in integrin pathways (Figures S6D and S6E), whereas HIV-1 RNA⁺ cells had heightened type I IFN and viral responses (Figures S6F and S6G). In contrast, gene ontology analysis of significantly downregulated genes showed significant downregulation of autophagy regulation in HIV-1 DNA⁺ cells and significant downregulation of negative regulations of cell growth and differentiation in HIV-1 RNA⁺ cells (Table S2).

We wanted to identify the transcriptional landscape of HIV-1-infected cells during viral suppression. However, we did not feel confident using the low number of cells captured to identify cellular markers. Instead, we asked whether cellular genes upregulated during viremia remained upregulated during viral suppression. In HIV-1 DNA⁺ cells, we found that cytotoxic markers *GZMA*, *GZMK*, *KLRB1*, and *LTB* were upregulated both in viremia and after viral suppression (Figure 4D). In HIV-1 RNA⁺ cells, we found that cytotoxic T cell markers (*CTSC* and *SYTL2*), type I IFN response genes (*IFI44*, *STAT1*, and *STAT2*), survival gene *CFLAR*, and T cell differentiation transcription factor *IKZF3* were upregulated both in viremia and after viral suppression (Figure 4E).

To distinguish the transcriptional programs in HIV-1-infected cells, we identified co-expressed genes *de novo* using WGCNA. We found a proliferation program that distinguished co-expressed genes between HIV-1 DNA⁺ cells, HIV-1 RNA⁺ cells, and HIV-1[−] cells (Figures 4F and 4G). These co-expressed genes (such as *IKZF3* and *IL21* [a key Tfh cytokine], *BIRC5* [Survivin], and *MKI67*) were involved in cell division and differentiation in gene ontology analysis (Figure 4H) and may support the proliferation of HIV-1 RNA⁺ cells despite active HIV-1 RNA expression. Of note, *BIRC5*³⁸ and *IL-21*⁶ are cellular factors known to promote HIV-1 persistence. We next identified distinct immune pathways that shaped the transcriptional landscape of HIV-1-infected during viremia. Using GSEA, we found significant enrichment of an integrin pathway in HIV-1 DNA⁺ cells ($p < 0.05$, Figure 4I) and IL-6/JAK/STAT3 signaling in HIV-1 RNA⁺ cells ($p < 0.05$, Figure 4J).

(C) Genes highly expressed in viremia in HIV-1 RNA⁺ cells and in HIV-1 DNA⁺ cells, represented in heatmap as comparisons of group means in normalized and scaled RNA expression. All genes passed $p < 0.05$, $\min.pct \geq 0.15$, $\log_2FC \geq 0.25$. Statistical significance for heatmaps was determined by Wilcoxon rank-sum test for comparisons between each group and all cells in the other two groups. For fair comparisons between groups in volcano plots and heatmap, HIV-1[−] cells were downsized to match the same number of cells in HIV-1⁺ groups with 1,000 bootstrap replicates. The 1,000 p values were transformed to follow a standard Cauchy distribution and a combined p value is calculated as the weighted sum of Cauchy transformed p values, followed by correction for multiple comparisons using the Benjamini-Hochberg (FDR) procedure.

(D and E) Dot plots of average normalized and scaled RNA expression for significantly upregulated genes identified in HIV-1 DNA⁺ cells in viremia as shown in (A) and in HIV-1 RNA⁺ cells in viremia as shown in (B) that were also upregulated in HIV-infected cells during viral suppression. $\log_2FC > 0$ between HIV-1⁺ cells and HIV-1[−] cells in viral suppression. p values did not reach statistical significance in viral suppression because of the low number of HIV⁺ cells captured. $n = 19$, 14, 56,738 HIV-1 DNA⁺ cells, HIV-1 RNA⁺ cells, and uninfected cells in viral suppression, respectively.

(F and G) Heatmap comparisons of pairwise gene expression Pearson's correlation coefficients, for the proliferation (*MKI67*)-driven gene program identified by WGCNA, between HIV-1 DNA⁺ cells versus HIV-1[−] cells in viremia (F) and between HIV-1 RNA⁺ cells versus HIV-1[−] cells in viremia (G). This gene program was identified in HIV-1 RNA⁺ cells in viremia by considering top 50 genes most positively and negatively associated in the first 8 principal components ($p < 0.05$ for at least 95% Wilcoxon rank-sum tests against 10,000 random module permutations).

(H) Enriched gene ontology biological processes determined using genes in WGCNA-identified proliferation gene program as query.

(I and J) To identify immune pathways, all 36,601 genes are ranked by \log_2 -fold change in normalized gene expression between HIV-1⁺ and HIV-1[−] cell groups in viremia. Significantly enriched pathways were identified using GSEA. Top 10 representative leading-edge genes were shown. See also Figures S6 and S7.

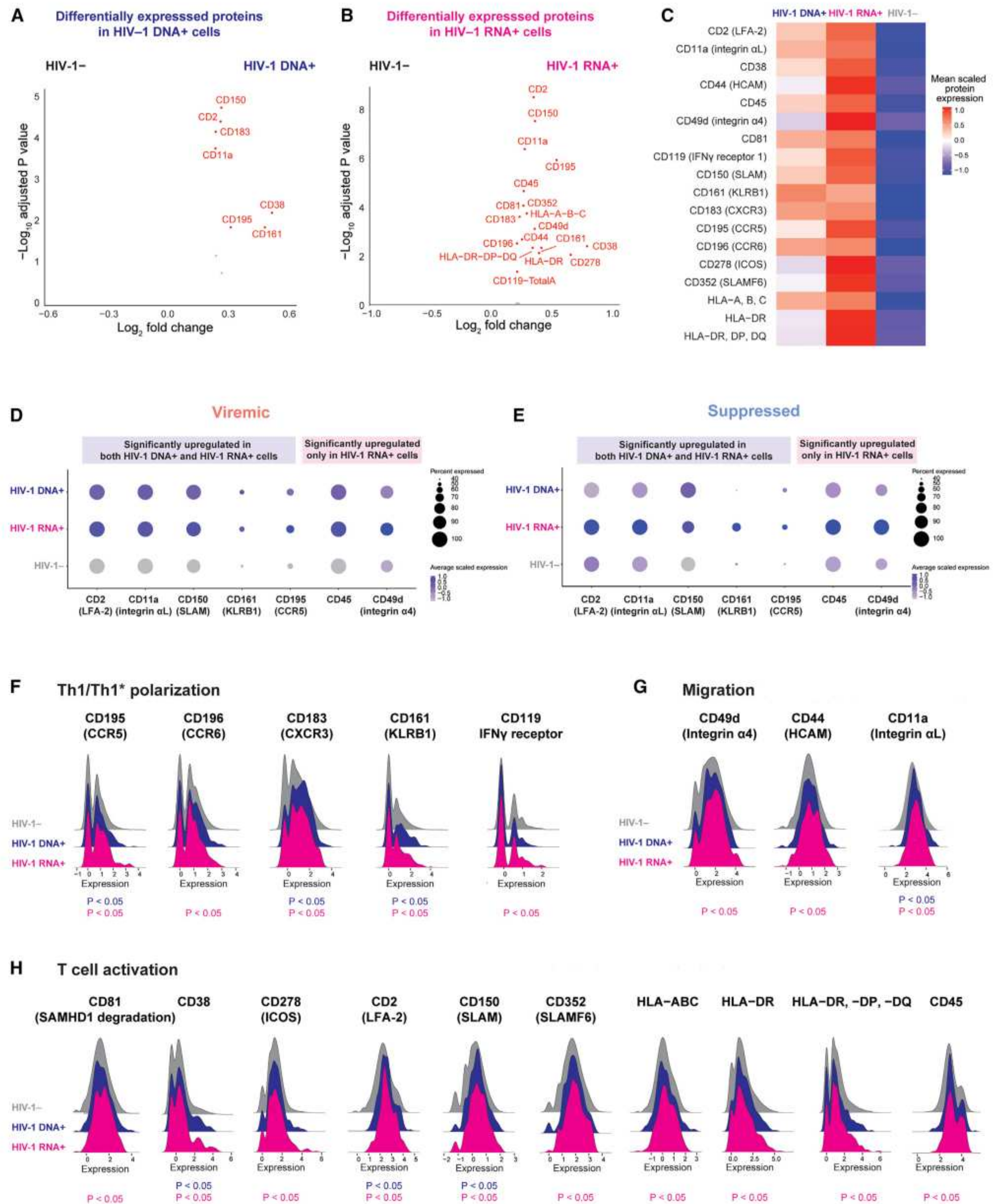


Figure 5. Transcriptionally inactive HIV-1-infected cells upregulate Th1/Th17, T cell activation, and homing protein expression

(A and B) Volcano plots indicating differentially expressed surface proteins in viremia between HIV-1 DNA⁺ cells (n = 233) or HIV-1 RNA⁺ cells (n = 256) versus HIV-1⁻ cells (n = 2,238). p < 0.05 and log₂FC ≥ 0.25.

(C) Surface proteins highly expressed in viremia in HIV-1 DNA⁺ cells versus HIV-1 RNA⁺ cells versus HIV-1⁻ cells, represented in heatmap as comparisons of group means in DSB-normalized and scaled protein expression. All proteins passed p < 0.05 and log₂FC ≥ 0.3. The mean expression of all protein features

(legend continued on next page)

Transcriptionally inactive HIV-1-infected cells expressed Th1/Th17, T cell activation, and migratory markers

Increased expression of cellular markers have been reported in HIV-1-infected cells, such as Th1 polarization (CXCR3 and CCR5),^{5,12} activation markers (HLA-DR,¹⁴ CD2,⁴⁶ ICOS,¹² and SLAM⁵), cytotoxic T cell markers (KLRB1⁴⁷ and Granzyme B¹³), exhaustion markers (PD-1, CTLA-4, and TIGIT),¹⁵ Tfh polarization (CXCR5 and PD-1),¹² and homing marker VLA-4 (integrin $\alpha 4\beta 1$).^{5,7,16} Furthermore, targeted HIV-1 proviral genome sequencing identified protein signatures enriched in CD4⁺ T cells harboring intact HIV-1 proviruses, such as PD-1, TIGIT, KLRG1, HVEM, CD49d (integrin $\alpha 4$), and CD95 (Fas receptor).⁶ Using DOGMA-seq, we identified 7 surface proteins that were significantly upregulated in both HIV-1 DNA⁺ cells and HIV-1 RNA⁺ cells, including Th1 polarization markers (CCR5, CXCR3, and KLRB1), T cell migration marker (ITGAL), and T cell activation markers (CD38, LFA-2, and SLAM) (Figures 5A–5C), consistent with previous studies.^{5,6} A total of 18 proteins were upregulated in HIV-1 RNA⁺ cells, including markers of Th1 and Th1* (Th1/Th17) polarization (CCR5, CCR6, CXCR3, KLRB1, and the IFN γ receptor CD119), migration (Integrin $\alpha 4$, Integrin αL , and HCAM), and T cell activation (Figure 5B). Notably, CD81 degrades SAM Domain and HD Domain 1 (SAMHD1) and enhances HIV-1 reverse transcription.⁴⁸ Given that the low number of HIV-1 DNA⁺ cells and HIV-1 RNA⁺ cells captured during viral suppression were not sufficient to perform robust statistical analysis, we asked whether protein markers upregulated during viremia were also upregulated during viral suppression. We found seven protein markers that were significantly upregulated in HIV-1 RNA⁺ cells in viremia were also upregulated in HIV-1 RNA⁺ cells in viral suppression (Figures 5D and 5E). Of note, SLAM and CCR5 protein expressions were upregulated in both HIV-1 DNA⁺ cells and HIV-1 RNA⁺ cells in viremia and viral suppression. Overall, we found that surface protein markers of Th1 polarization and T cell activation were upregulated in HIV-1 DNA⁺ cells versus HIV-1[−] cells, whereas surface protein markers of Th1 and Th1/Th17 polarization (Figure 5F), migration (Figure 5G), and T cell activation (Figure 5H) were upregulated in HIV-1 RNA⁺ cells versus HIV-1[−] cells.

The heterogeneous HIV-1-infected cells comprised four distinct cell states: IRF, cytotoxic, AP-1, and cell death

We identified epigenetic, transcriptional, and protein signatures in HIV-1⁺ memory CD4⁺ T cells. Although differences existed between participants, these programs were not driven by specific participants (Figure S7). We asked whether we could dissect the heterogeneity of HIV-1-infected CD4⁺ T cell reservoir. First,

we collected all identified HIV-1-infected cells to determine distinct cell clusters by their transcriptional profiles (Figure 6A). We found that clustering of HIV-1⁺ cells did not result from batch effects by infection conditions, HIV-1 RNA expression (Figure 6B), or from study participants who differed in peak viral loads (Figure 6C; Table S1). Each cluster had distinct transcriptional profiles (Figure 6D), distinctly enriched transcription factor accessibility (Figure 6E), and distinct surface protein expression profiles (Figure 6E). Indeed, four phenotypically distinct populations of HIV-1⁺ cells were determined across six HIV-1⁺ study participants.

We annotated each cluster of HIV-1-infected cells based on their distinct cellular profiles (transcription factor accessibility, transcriptional programs, and surface protein expression): (1) the IRF cluster had increased IRF and STAT1/STAT2 transcription factor accessibility (Figure 6E), “activation/proliferation” gene co-expression program (Figure 6H: co-expression of *ICOS*, *BIRC5*, *IL21*, and *MKI67*), and activation surface proteins (Figure 6F: HLA-DR, ICOS, and CD38); (2) the cytotoxic cluster had increased Eomes transcription factor accessibility (Figure 6E), upregulated cytotoxic effector T cell gene markers (Figure 6D: *GZMA*, *GZMH*, *NKG7*, *CCL5*, *IFNG*, and *ZEB2*), “cytotoxic” gene co-expression program (Figure 6I: co-expression of *GZMB*, *GZMH*, *NKG7*, *IFNG*, and *ZEB2*), and cytotoxic surface proteins (Figure 6F: GPR56 and KLRG1); (3) the AP-1 cluster had increased AP-1 transcription factor accessibility (Figure 6E), increased *JUN* and *FOS* RNA expression (Figure 6D), “TNF” gene co-expression program (Figure 6J: co-expression of *JUN*, *FOS*, *TNFAIP3*, and *NFKBIA*), and migratory surface proteins (Figure 6F: HCAM, PSGL-1, and integrin $\alpha 6$ and $\beta 1$); and (4) the MT (mitochondrial gene) cluster had upregulated mitochondrial gene expression (Figure 6D), likely reflecting cell death.

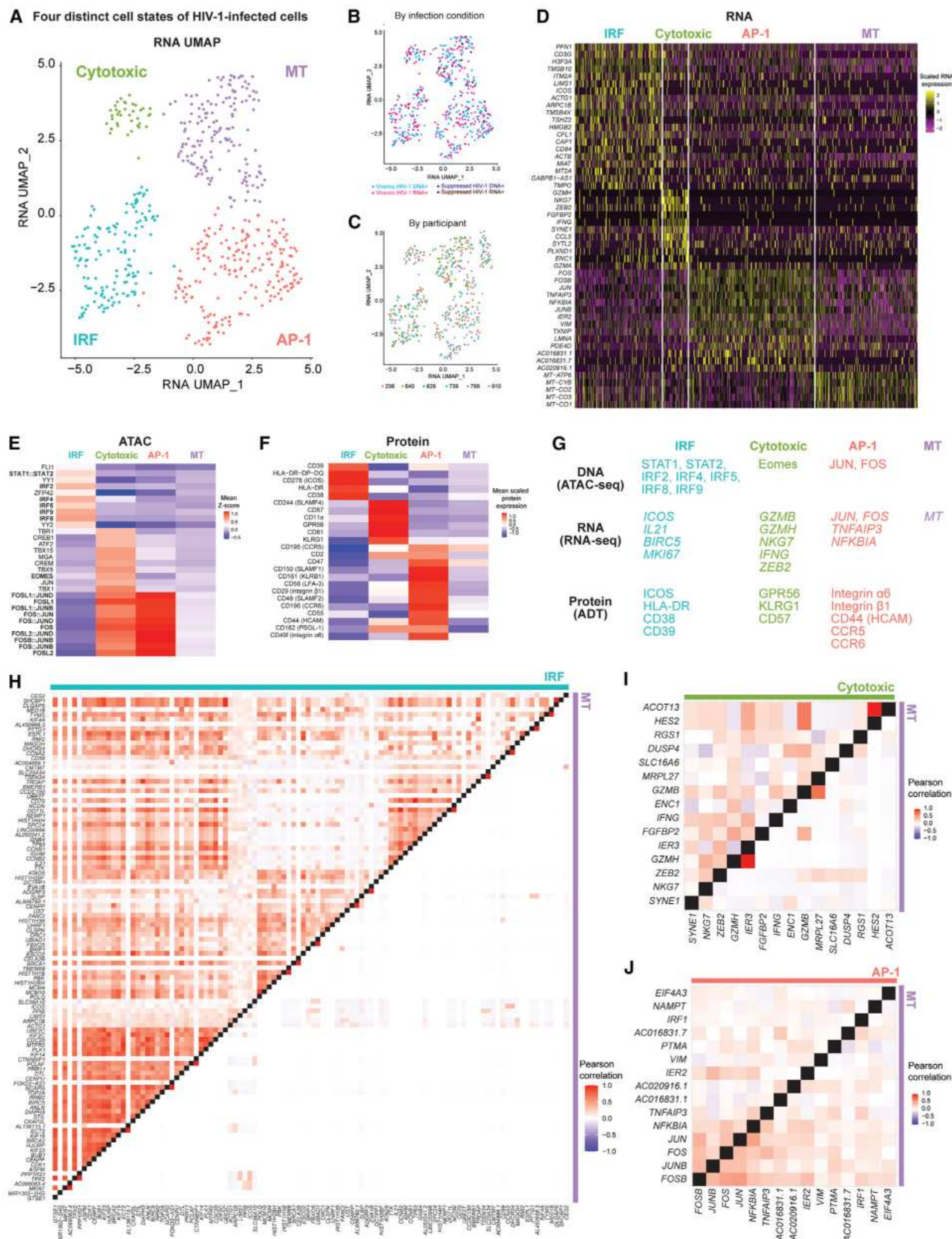
Both transcriptionally inactive and active HIV-1-infected cells upregulate *IKZF3* expression

Our findings all pointed to the plausibility that *IKZF3* promoted the proliferation and survival of HIV-1-infected cells, particularly during acute HIV-1 infection. We showed that AP-1, IRF7, NFATC3, and Tbox transcription factors may bind to an accessible CRE in *IKZF3* (Figure 1I) to regulate its expression (Figure 1J). In addition, *IKZF3* was co-expressed with cellular proliferation and survival genes such as *IL21*, *MKI67*, and *BIRC5* (Figure 4G) in HIV-1 RNA⁺ cells. We next compared *IKZF3* gene accessibility and gene expression by infection conditions (Figure 7A) and between HIV-1⁺ and HIV-1[−] cells in viremia (Figure 7B) across memory CD4⁺ T cell subsets. *IKZF3* gene accessibility (Figure 7A) and RNA expression (Figure 7A) were increased during viremia in proliferating cells. Compared

shown were also tested to be greater than the mean expression of their specific isotype controls ($Z > 2$; two-sample Z test) in HIV-1⁺ cells. Statistical significance for heatmaps was determined by Wilcoxon rank-sum test for comparisons between each group and all cells in the other two groups. For fair comparisons between groups, HIV-1[−] cells were downsized to match the same number of cells in HIV-1⁺ groups with 1,000 bootstrap replicates. The 1,000 p values were transformed to follow a standard Cauchy distribution and a combined p value is calculated as the weighted sum of transformed p values, followed by correction for multiple comparisons using the Benjamini-Hochberg (FDR) procedure.

(D and E) Significantly upregulated proteins identified in HIV-1 DNA⁺ cells and in HIV-1 RNA⁺ cells (A and B) in viremia (D) that were also upregulated in HIV-1-infected cells in viral suppression ($\log_2FC > 0$ between HIV-1⁺ cells and HIV-1[−] cells in viral suppression) (E). Protein expression is visualized in dots plot of average CLR-normalized and scaled expression. p values did not reach statistical significance in viral suppression because of the low number of HIV-1⁺ cells captured. n = 19, 14, 56,738 HIV-1 DNA⁺ cells, HIV-1 RNA⁺ cells, and uninfected cells in viral suppression, respectively.

(F–H) Ridge plot of DSB-normalized and scaled protein expression distributions for significantly highly expressed surface proteins identified in (A) and (B). See also Figures S6 and S7.



(legend continued on next page)

between HIV-1⁺ and HIV-1⁻ proliferating cells, *IKZF3* gene accessibility was significantly higher in HIV-1 DNA⁺ cells (Figures 7B–7D), and *IKZF3* gene expression was significantly higher in both HIV-1 DNA⁺ cells and HIV-1 RNA⁺ cells (Figures 7B and 7E). Overall, *IKZF3* had increased gene accessibility and gene expression in proliferating cells under viremia, especially HIV-1-infected cells.

To validate whether Aiolos (encoded by *IKZF3*) protein expression was indeed increased during acute HIV-1 infection, we infected activated primary CD4⁺ T cells (both total CD4⁺ T cells and memory CD4⁺ T cells) from uninfected individuals with replication-competent NL4-3 reference strain and three R5-tropic clinical isolates as previously reported⁴⁹ and measured Aiolos protein expression using flow cytometry. HIV-1 infection was measured by HIV-1 p24 expression and CD4 downregulation. We found that HIV-1-infected cells had higher Aiolos protein expression as measured by mean fluorescent intensity (MFI), both in total CD4⁺ T cells and in memory CD4⁺ T cells (Figures 7F and 7G). We then asked whether Aiolos protein expression correlated with Ki-67 protein expression, as we saw in transcriptome analysis (Figure 4F). Indeed, Aiolos⁺ cells had higher Ki-67 (encoded by *MKI67*) protein expression, which was more prominent in HIV-1⁺ cells than in HIV-1⁻ cells (Figures 7I and 7J), indicating that Aiolos expression may promote the proliferation of HIV-1-infected cells. Overall, both single-cell DOGMA-seq and *in vitro* validation results showed that *IKZF3* expression was increased in HIV-1-infected cells and correlated with proliferation marker Ki-67 expression.

DISCUSSION

Our study examined the single-cell epigenetic, transcriptional, and protein expression profiles of a total of 93,209 memory CD4⁺ T cells, including 25,778 cells from viremia and 56,771 cells from viral suppression from six people living with HIV-1 and 10,660 cells from four uninfected individuals. Among them, we identified 489 HIV-1-infected cells (233 HIV-1 DNA⁺ cells and 256 HIV-1 RNA⁺ cells) in viremia and 33 HIV-1-infected cells (19 HIV-1 DNA⁺ cells and 14 HIV-1 RNA⁺ cells) in viral suppression.

Our study revealed the single-cell trimodal cellular states of HIV-1-infected cells, particularly the latent HIV-1-infected cells. We identified transcription factors that governed cellular programs of HIV-1-infected cells across the central dogma of molecular biology. Specifically, we found four distinct populations

HIV-1-infected cells: IRF, cytotoxic, AP-1, and MT clusters. Through a genome-wide understanding of the cellular programs of HIV-1-infected cells, we identified T cell immune programs that shaped the cell states of HIV-1-infected cells (Figure 6): some cells may die of viral cytopathic effects (MT cluster), whereas others may survive and proliferate by taking advantage of T cell differentiation programs. During acute infection, type I IFN responses shaped a subset of HIV-1-infected cells that had heightened IRF transcription factor-binding motif accessibility and drove T cell activation and proliferation programs (characterized by the upregulation of survival and proliferation genes *IL21*, *BIRC5*, and *MKI67* and surface proteins of activation ICOS, HLA-DR, and CD38) (IRF cluster). Some cells differentiated toward cytotoxic CD4⁺ T cells, driven by terminal effector transcription factors (Eomes) and characterized by markers of cytotoxic T cell effectors (upregulated *GZMB*, *GZMH*, *NKG7*, *IFNG*, and surface proteins GRP56 and KLRG1) (cytotoxic cluster). Other infected cells were driven by AP-1 transcription factors and were upregulated in migratory proteins (integrin β 1, HCAM, PSGL-1, CCR5, and CCR6) (AP-1 cluster). Overall, we identified distinct immune programs among the heterogeneous HIV-1-infected CD4⁺ T cells.

We postulated that upregulation of specific cellular markers in HIV-1-infected cells could be caused by preferential infection of cells that expressed these markers or preferential proliferation of these cells despite HIV-1-infection, or both. For example, HIV-1 may preferentially infect activated Th1 cells because they expressed higher co-receptor CCR5 protein expression (Figure 5F). Alternatively, HIV-1 infection can be stochastic, but cells that had strong activation and proliferation programs (*IL21*, *BIRC5*,³⁸ and *MKI67*) (Figure 6G) or cytotoxic T cells (*GZMB*, *GZMH*, *IFNG*, and *NKG7*¹³) (Figure 6H) could more favorably proliferate and persist over time.

Taking advantage of the genome-wide epigenetic and transcriptional profiling, we identified the transcription factor Aiolos (encoded by *IKZF3*) and its impact on the proliferation of HIV-1-infected cells, which could not be identified by existing multi-omic methods. Aiolos had enriched chromatin accessibility and RNA expression in proliferating cells (Figures 1G, 1J, and 7A) and in HIV-1-infected cells (Figures 4A, 4B, 7B, 7D, and 7E). Enrichment of Aiolos protein expression in HIV-1-infected cells was validated during *in vitro* productive infection (Figures 7F–7J) and *ex vivo* in activated CD4⁺ T cells from virally suppressed individuals in an independent study.⁹ Transcription factors that may activate *IKZF3* gene expression were IRF7, AP-1, and NFAT (Figure 1I), which

apparent batch effects were observed by infection conditions or by HIV-1 RNA expression (B) or by study participants (C). Batch effects between participants were corrected by Harmony.

(D) Heatmap of normalized and scaled RNA expression for most highly differentially expressed genes (by log₂FC) in each cluster of cells. $p < 0.05$, min.pct ≥ 0.25 , log₂ FC ≥ 0.25 .

(E) Differential accessibility for transcription factor-binding motifs, represented in heatmap as comparisons of means of ATAC-seq chromVAR bias-corrected deviations (Z score) between group. All motifs shown had significantly increased accessibility, by $p < 0.05$ and mean difference ≥ 0.3 .

(F) Proteins highly expressed per cell group, represented in heatmap as comparisons of group means in DSB-normalized and scaled protein expression. All features passed $p < 0.05$, and log₂FC ≥ 0.25 . The mean expression of all protein features shown were also tested to be greater than the mean expression of their specific isotype controls in HIV-1-infected cells ($Z > 2$; two-sample Z test). Statistical significance for all heatmaps was determined by Wilcoxon rank-sum test for comparisons between each group and all cells in the other three groups.

(G) Transcription factors having enriched binding motif accessibility and upregulated genes and proteins in each of the four phenotypically distinct clusters of HIV-1⁺ cells.

(H–J) Heatmap comparisons of pairwise gene expression Pearson's correlation coefficients for gene programs identified by WGCNA (using with top 50 genes most positively and negatively associated with the first 8 principal components in the transcriptional profiles of all 522 HIV-1⁺ cells). See also Figures S6.

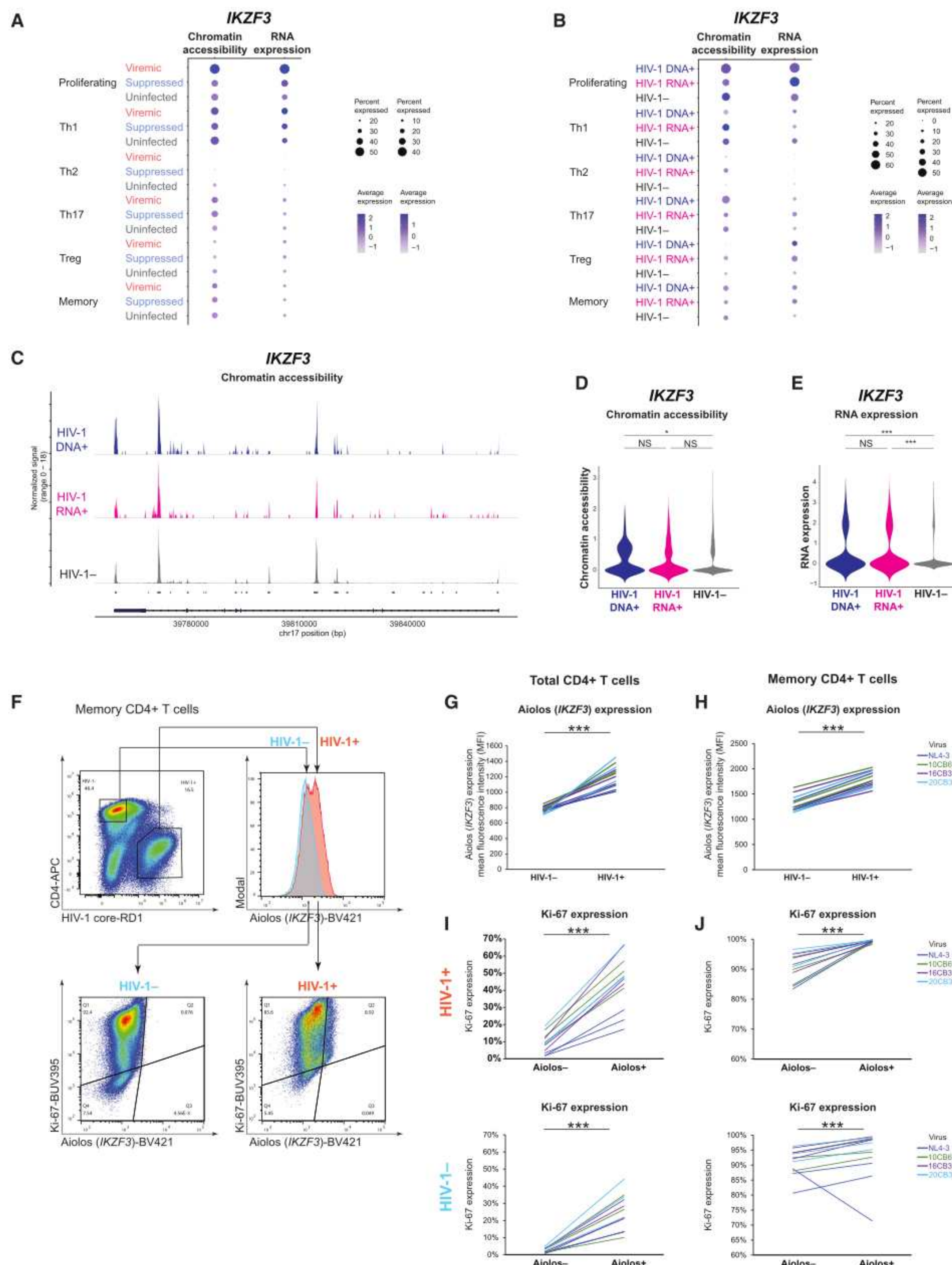


Figure 7. Both transcriptionally inactive and active HIV-1-infected cells upregulate *IKZF3* expression

(A and B) Dot plots showing mean normalized and scaled chromatin accessibility (left) and RNA expression (right) of *IKZF3* in six main cell subsets. (C) Chromatin accessibility at *IKZF3*.

(legend continued on next page)

were also the major transcription factors that govern T cell proliferation in viremia (Figure 1F). Aiolos expression correlated with proliferation marker Ki-67 expression in HIV-1-infected cells, both at RNA expression (Figure 4G) and at protein expression (Figures 7G–7J). Given that Aiolos drives Bcl-2 expression³⁹ and NF- κ B signaling⁵⁰ and promotes cellular survival and proliferation, Aiolos may be a transcription factor that drives the proliferation of HIV-1-infected cells. Testing whether Aiolos inhibitors (such as lenalidomide, a US Food and Drug Administration [FDA]-approved drug for multiple myeloma⁵¹) can halt the proliferation of HIV-1-infected cells without damaging normal immune responses can be a strategy for HIV eradication interventions.

Although no cellular markers can serve as the sole marker specific for HIV-1-infected cells for therapeutic targeting, understanding epigenetic and transcriptional regulation of HIV-1-infected cells in the contexts of T cell differentiation^{52,53} and T cell clonal expansion dynamics⁵⁴ guides the development of therapeutic strategies. Our study advances our understanding of HIV-1 reservoir to a big picture understanding of T cell proliferation and the phenotypic complexity of HIV-1-infected cells.

Limitations of the study

The major limitations of the study were the low number of HIV-1-infected cells identified during viral suppression which inherently limited the conclusions that could be drawn from the suppressed time point, the inability to infer proviral genome intactness (DOGMA-seq recovers fragmented DNA and RNA reads), the limited HIV-1 DNA detection by ATAC-seq, and that HIV-1 DNA⁺ RNA[−] cells having undetectable HIV-1 RNA may not necessarily be transcriptionally silent because of the detection limit of HIV-1 RNA by single-cell RNA-seq-based approaches. Although plate-based methods⁵⁵ may enhance HIV-1⁺ read recovery, the low throughput is not sufficient for clinical samples. An additional limitation of the study is that all participants were young Hispanic males; hence, the generalizability of our conclusions to people of different ages, sexes, and ethnicities remains to be determined. Given that a significant proportion of our findings are consistent with previous single-cell profiling of HIV-1-infected cells, such as AP-1 in ATAC-seq,⁵ T cell phenotypes in RNA-seq and surface protein profiling,^{5–7,12} and identification of cytotoxic T cells as the most clonal population,¹³ at least part of our results have been confirmed by other studies.

STAR★METHODS

Detailed methods are provided in the online version of this paper and include the following:

- KEY RESOURCES TABLE
- RESOURCE AVAILABILITY

○ Lead contact

○ Materials availability

○ Data and code availability

● EXPERIMENTAL MODELS AND STUDY PARTICIPANT DETAILS

○ Participant details

○ Experimental models

● METHOD DETAILS

○ Memory CD4⁺ T cell isolation, cell hashing for pooling, and cell staining with barcoded antibodies

○ Cell permeabilization

○ DOGMA-seq library preparation and sequencing

○ Single-cell analyses

● QUANTIFICATION AND STATISTICAL ANALYSIS

SUPPLEMENTAL INFORMATION

Supplemental information can be found online at <https://doi.org/10.1016/j.immuni.2023.10.002>.

ACKNOWLEDGMENTS

We thank all study participants. We thank Guilin Wang and Yale Center for Genome Analysis. This work is supported by Yale Top Scholar, NIH R01 AI141009, NIH R01 AI174863, NIH R61/R33 DA047037, NIH P01 AI169768, NIH R37 AI147868, NIH R01 DA051906, NIH R01 AI145164, NIH UM1 DA051410, NIH U01 DA053628, NIH CHEETAH P50 AI150464, NIH REACH Martin Delaney Collaboratory UM1 AI164565, NIH BEAT-HIV Martin Delaney Collaboratory UM1 AI164570, Natural Sciences and Engineering Research Council of Canada (NSERC) Postdoctoral Fellowship (PDF557234) (Y.W.), AIDS and Cancer Specimen Resource Pilot Grant (Y.W.), Yale Gruber Fellowship (J.A.C. and H.K.M.), and NIH T32 AI055403 (J.A.C.). The Sabes and MERLIN studies were supported by NIH R01 DA032106 and NIH R01 DA040532 (A.D.). We thank ART drug donation from Merck & Co. and Gilead Sciences Inc for the Sabes and Merlin cohorts.

AUTHOR CONTRIBUTIONS

Y.W., J.A.C., and Y.-C.H. designed and performed DOGMA-seq experiments. Y.W. performed bioinformatic analyses. T.C.D. performed flow cytometry with help from H.K.M. and Y.-C.H. D.P.-S., J.L., R.A., and A.D. recruited study participants and processed clinical samples. A.D. designed the Sabes and MERLIN studies and assumed oversight for study conduct and analysis. Y.W. and Y.C.-H. wrote the manuscript with input from all authors.

DECLARATION OF INTERESTS

The authors declare no competing interests.

INCLUSION AND DIVERSITY

We support inclusive, diverse, and equitable conduct of research.

Received: March 22, 2023

Revised: June 26, 2023

Accepted: October 4, 2023

Published: November 2, 2023

(D and E) Violin plots showing differences in *IKZF3* chromatin accessibility (D) and RNA expression (E). * $p < 0.05$, *** $p < 0.001$, Wilcoxon rank-sum tests.

(F) Representative flow cytometry plot showing Aiolos protein expression in HIV-1-infected versus uninfected cells. Activated primary CD4⁺ T cells were infected with the replication-competent NL4-3 reference strain and three R5-tropic clinical isolates 10CB6, 16CB3, and 20CB3.⁴⁹ After lymphocyte gating, doublet discrimination, and gating for cell viability, HIV-1-infected cells were determined based on HIV-1 core-RD1 expression and CD4 downregulation.

(G and H) Aiolos protein expression in HIV-1-infected and uninfected cells. Each line represents one biological replicate from one uninfected donor. Total CD4⁺ T cells (G) and memory CD4⁺ T cells (H) from 3 uninfected donors were tested for each virus.

(I and J) Proportion of Ki-67 expression among Aiolos⁺ HIV-1⁺ cells versus Aiolos[−] HIV-1⁺ cells in total CD4⁺ T cells (I) and memory CD4⁺ T cells (J). *** $p < 0.001$, paired two-tailed Student's *t* test (G–J).

REFERENCES

- Chun, T.W., Stuyver, L., Mizell, S.B., Ehler, L.A., Mican, J.A., Baseler, M., Lloyd, A.L., Nowak, M.A., and Fauci, A.S. (1997). Presence of an inducible HIV-1 latent reservoir during highly active antiretroviral therapy. *Proc. Natl. Acad. Sci. USA* 94, 13193–13197. <https://doi.org/10.1073/pnas.94.24.13193>.
- Finzi, D., Hermankova, M., Pierson, T., Carruth, L.M., Buck, C., Chaisson, R.E., Quinn, T.C., Chadwick, K., Margolick, J., Brookmeyer, R., et al. (1997). Identification of a reservoir for HIV-1 in patients on highly active antiretroviral therapy. *Science* 278, 1295–1300. <https://doi.org/10.1126/science.278.5341.1295>.
- Wong, J.K., Hezareh, M., Günthard, H.F., Havlir, D.V., Ignacio, C.C., Spina, C.A., and Richman, D.D. (1997). Recovery of replication-competent HIV despite prolonged suppression of plasma viremia. *Science* 278, 1291–1295. <https://doi.org/10.1126/science.278.5341.1291>.
- Einkauf, K.B., Osborn, M.R., Gao, C., Sun, W., Sun, X., Lian, X., Parsons, E.M., Gladkov, G.T., Seiger, K.W., Blackmer, J.E., et al. (2022). Parallel analysis of transcription, integration, and sequence of single HIV-1 proviruses. *Cell* 185, 266–282.e15. <https://doi.org/10.1016/j.cell.2021.12.011>.
- Wu, V.H., Nordin, J.M.L., Nguyen, S., Joy, J., Mampe, F., Del Rio Estrada, P.M., Torres-Ruiz, F., González-Navarro, M., Luna-Villalobos, Y.A., Ávila-Ríos, S., et al. (2023). Profound phenotypic and epigenetic heterogeneity of the HIV-1-infected CD4(+) T cell reservoir. *Nat Immunol* 24, 359–370. <https://doi.org/10.1038/s41590-022-01371-3>.
- Sun, W., Gao, C., Hartana, C.A., Osborn, M.R., Einkauf, K.B., Lian, X., Bone, B., Bonheur, N., Chun, T.W., Rosenberg, E.S., et al. (2023). Phenotypic signatures of immune selection in HIV-1 reservoir cells. *Nature* 614, 309–317. <https://doi.org/10.1038/s41586-022-05538-8>.
- Dufour, C., Richard, C., Pardons, M., Massanella, M., Ackaoui, A., Murrell, B., Routy, B., Thomas, R., Routy, J.P., Fromentin, R., et al. (2023). Phenotypic characterization of single CD4+ T cells harboring genetically intact and inducible HIV genomes. *Nat. Commun.* 14, 1115. <https://doi.org/10.1038/s41467-023-36772-x>.
- Clark, I.C., Mudvari, P., Thaploo, S., Smith, S., Abu-Laban, M., Hamouda, M., Theberge, M., Shah, S., Ko, S.H., Pérez, L., et al. (2023). HIV silencing and cell survival signatures in infected T cell reservoirs. *Nature* 614, 318–325. <https://doi.org/10.1038/s41586-022-05556-6>.
- Cohn, L.B., da Silva, I.T., Valieris, R., Huang, A.S., Lorenzi, J.C.C., Cohen, Y.Z., Pai, J.A., Butler, A.L., Caskey, M., Jankovic, M., et al. (2018). Clonal CD4(+) T cells in the HIV-1 latent reservoir display a distinct gene profile upon reactivation. *Nat. Med.* 24, 604–609. <https://doi.org/10.1038/s41591-018-0017-7>.
- Liu, R., Yeh, Y.J., Varabyou, A., Collora, J.A., Sherrill-Mix, S., Talbot, C.C., Jr., Mehta, S., Albrecht, K., Hao, H., Zhang, H., et al. (2020). Single-cell transcriptional landscapes reveal HIV-1-driven aberrant host gene transcription as a potential therapeutic target. *Sci. Transl. Med.* 12. <https://doi.org/10.1126/scitranslmed.aaz0802>.
- Weymar, G.H.J., Bar-On, Y., Oliveira, T.Y., Gaebler, C., Ramos, V., Hartweg, H., Breton, G., Caskey, M., Cohn, L.B., Jankovic, M., et al. (2022). Distinct gene expression by expanded clones of quiescent memory CD4(+) T cells harboring intact latent HIV-1 proviruses. *Cell Rep.* 40, 111311. <https://doi.org/10.1016/j.celrep.2022.111311>.
- Gantner, P., Buranapraditkun, S., Pagliuzza, A., Dufour, C., Pardons, M., Mitchell, J.L., Kroon, E., Sacdalan, C., Tulmethakaan, N., Pinyakorn, S., et al. (2023). HIV rapidly targets a diverse pool of CD4(+) T cells to establish productive and latent infections. *Immunity* 56, 653–668.e5. <https://doi.org/10.1016/j.immuni.2023.01.030>.
- Collora, J.A., Liu, R., Pinto-Santini, D., Ravindra, N., Ganoza, C., Lama, J.R., Alfaro, R., Chiarella, J., Spudich, S., Mounzer, K., et al. (2022). Single-cell multiomics reveals persistence of HIV-1 in expanded cytotoxic T cell clones. *Immunity* 55, 1013–1031.e7. <https://doi.org/10.1016/j.immuni.2022.03.004>.
- Lee, E., Bacchetti, P., Milush, J., Shao, W., Boritz, E., Douek, D., Fromentin, R., Liegler, T., Hoh, R., Deeks, S.G., et al. (2019). Memory CD4 + T-cells expressing HLA-DR contribute to HIV persistence during prolonged antiretroviral therapy. *Front. Microbiol.* 10, 2214. <https://doi.org/10.3389/fmicb.2019.02214>.
- Fromentin, R., Bakeman, W., Lawani, M.B., Khoury, G., Hartogensis, W., DaFonseca, S., Killian, M., Epling, L., Hoh, R., Sinclair, E., et al. (2016). CD4+ T cells expressing PD-1, TIGIT and LAG-3 contribute to HIV persistence during ART. *PLoS Pathog.* 12, e1005761. <https://doi.org/10.1371/journal.ppat.1005761>.
- Pardons, M., Baxter, A.E., Massanella, M., Pagliuzza, A., Fromentin, R., Dufour, C., Leyre, L., Routy, J.P., Kaufmann, D.E., and Chomont, N. (2019). Single-cell characterization and quantification of translation-competent viral reservoirs in treated and untreated HIV infection. *PLoS Pathog.* 15, e1007619. <https://doi.org/10.1371/journal.ppat.1007619>.
- Lee, G.Q., Orlova-Fink, N., Einkauf, K., Chowdhury, F.Z., Sun, X., Harrington, S., Kuo, H.H., Hua, S., Chen, H.R., Ouyang, Z., et al. (2017). Clonal expansion of genome-intact HIV-1 in functionally polarized Th1 CD4+ T cells. *J. Clin. Invest.* 127, 2689–2696. <https://doi.org/10.1172/JCI93289>.
- Kurachi, M., Barnitz, R.A., Yosef, N., Odorizzi, P.M., Dilorio, M.A., Lemieux, M.E., Yates, K., Godec, J., Klatt, M.G., Regev, A., et al. (2014). The transcription factor BATF operates as an essential differentiation checkpoint in early effector CD8+ T cells. *Nat. Immunol.* 15, 373–383. <https://doi.org/10.1038/ni.2834>.
- Kolumam, G.A., Thomas, S., Thompson, L.J., Sprent, J., and Murali-Krishna, K. (2005). Type I interferons act directly on CD8 T cells to allow clonal expansion and memory formation in response to viral infection. *J. Exp. Med.* 202, 637–650. <https://doi.org/10.1084/jem.20050821>.
- Shaulian, E., and Karin, M. (2002). AP-1 as a regulator of cell life and death. *Nat. Cell Biol.* 4, E131–E136. <https://doi.org/10.1038/ncb0502-e131>.
- Wherry, E.J., Ha, S.J., Kaech, S.M., Haining, W.N., Sarkar, S., Kalia, V., Subramaniam, S., Blattman, J.N., Barber, D.L., and Ahmed, R. (2007). Molecular signature of CD8+ T cell exhaustion during chronic viral infection. *Immunity* 27, 670–684. <https://doi.org/10.1016/j.immuni.2007.09.006>.
- Roychoudhuri, R., Clever, D., Li, P., Wakabayashi, Y., Quinn, K.M., Klebanoff, C.A., Ji, Y., Sukumar, M., Eil, R.L., Yu, Z., et al. (2016). BACH2 regulates CD8+ T cell differentiation by controlling access of AP-1 factors to enhancers. *Nat. Immunol.* 17, 851–860. <https://doi.org/10.1038/ni.3441>.
- Yao, C., Lou, G., Sun, H.W., Zhu, Z., Sun, Y., Chen, Z., Chauss, D., Moseman, E.A., Cheng, J., D'Antonio, M.A., et al. (2021). BACH2 enforces the transcriptional and epigenetic programs of stem-like CD8+ T cells. *Nat. Immunol.* 22, 370–380. <https://doi.org/10.1038/s41590-021-00868-7>.
- Zuberbuehler, M.K., Parker, M.E., Wheaton, J.D., Espinosa, J.R., Salzler, H.R., Park, E., and Ciofani, M. (2019). The transcription factor c-Maf is essential for the commitment of IL-17-producing $\gamma\delta$ T cells. *Nat. Immunol.* 20, 73–85. <https://doi.org/10.1038/s41590-018-0274-0>.
- Intlekofer, A.M., Takemoto, N., Wherry, E.J., Longworth, S.A., Northrup, J.T., Palanivel, V.R., Mullen, A.C., Gasink, C.R., Kaech, S.M., Miller, J.D., et al. (2005). Effector and memory CD8+ T cell fate coupled by T-bet and eomesodermin. *Nat. Immunol.* 6, 1236–1244. <https://doi.org/10.1038/ni1268>.
- Ivanov, I.I., McKenzie, B.S., Zhou, L., Tadokoro, C.E., Lepelley, A., Lafaille, J.J., Cua, D.J., and Littman, D.R. (2006). The orphan nuclear receptor ROR γ directs the differentiation program of proinflammatory IL-17+ T helper cells. *Cell* 126, 1121–1133. <https://doi.org/10.1016/j.cell.2006.07.035>.
- Mimitou, E.P., Lareau, C.A., Chen, K.Y., Zorzetto-Fernandes, A.L., Hao, Y., Takeshima, Y., Luo, W., Huang, T.S., Yeung, B.Z., Papalexi, E., et al. (2021). Scalable, multimodal profiling of chromatin accessibility, gene expression and protein levels in single cells. *Nat. Biotechnol.* 39, 1246–1258. <https://doi.org/10.1038/s41587-021-00927-2>.
- Lama, J.R., Brezak, A., Dobbins, J.G., Sanchez, H., Cabello, R., Rios, J., Bain, C., Ulrich, A., De la Grecca, R., Sanchez, J., et al. (2018). Design strategy of the Sabes study: diagnosis and treatment of early HIV infection among men who have sex with men and transgender women in Lima,

- Peru, 2013–2017. *Am. J. Epidemiol.* 187, 1577–1585. <https://doi.org/10.1093/aje/kwy030>.
29. Lama, J.R., Ignacio, R.A.B., Alfaro, R., Rios, J., Cartagena, J.G., Valdez, R., Bain, C., Barbarán, K.S., Villaran, M.V., Pilcher, C.D., et al. (2020). Clinical and immunologic outcomes after immediate or deferred antiretroviral therapy initiation during primary HIV infection: the Sabes randomized clinical study. *Clin. Infect. Dis.* <https://doi.org/10.1093/cid/ciaa167>.
30. McInnes, L., Healy, J., and Melville, J. (2018). UMAP: uniform manifold approximation and projection for dimension reduction. Preprint at arXiv. <https://doi.org/10.48550/arXiv.1802.03426>.
31. Arp, J., Kirchhof, M.G., Baroja, M.L., Nazarian, S.H., Chau, T.A., Strathdee, C.A., Ball, E.H., and Madrenas, J. (2003). Regulation of T-cell activation by phosphodiesterase 4B2 requires its dynamic redistribution during immunological synapse formation. *Mol. Cell. Biol.* 23, 8042–8057. <https://doi.org/10.1128/MCB.23.22.8042-8057.2003>.
32. Ménasché, G., Ménager, M.M., Lefebvre, J.M., Deutsch, E., Athman, R., Lambert, N., Mahlaoui, N., Court, M., Garin, J., Fischer, A., et al. (2008). A newly identified isoform of Slp2a associates with Rab27a in cytotoxic T cells and participates to cytotoxic granule secretion. *Blood* 112, 5052–5062. <https://doi.org/10.1182/blood-2008-02-141069>.
33. Becattini, S., Latorre, D., Mele, F., Foglierini, M., De Gregorio, C., Cassotta, A., Fernandez, B., Kelderman, S., Schumacher, T.N., Corti, D., et al. (2015). T cell immunity. Functional heterogeneity of human memory CD4(+) T cell clones primed by pathogens or vaccines. *Science* 347, 400–406. <https://doi.org/10.1126/science.1260668>.
34. Loetscher, P., Uguccioni, M., Bordoli, L., Baggiolini, M., Moser, B., Chizzolini, C., and Dayer, J.M. (1998). CCR5 is characteristic of Th1 lymphocytes. *Nature* 391, 344–345. <https://doi.org/10.1038/34814>.
35. Antonioli, L., Pacher, P., Vizi, E.S., and Haskó, G. (2013). CD39 and CD73 in immunity and inflammation. *Trends Mol. Med.* 19, 355–367. <https://doi.org/10.1016/j.molmed.2013.03.005>.
36. Zhang, B., and Horvath, S. (2005). A general framework for weighted gene co-expression network analysis. *Stat. Appl. Genet. Mol. Biol.* 4, Article17. <https://doi.org/10.2202/1544-6115.1128>.
37. Langfelder, P., and Horvath, S. (2008). WGCNA: an R package for weighted correlation network analysis. *BMC Bioinformatics* 9, 559. <https://doi.org/10.1186/1471-2105-9-559>.
38. Kuo, H.H., Ahmad, R., Lee, G.Q., Gao, C., Chen, H.R., Ouyang, Z., Szucs, M.J., Kim, D., Tsibris, A., Chun, T.W., et al. (2018). Anti-apoptotic protein BIRC5 maintains survival of HIV-1-infected CD4(+) T cells. *Immunity* 48, 1183–1194.e5. <https://doi.org/10.1016/j.immuni.2018.04.004>.
39. Romero, F., Martínez-A, C., Camonis, J., and Rebollo, A. (1999). Aiolos transcription factor controls cell death in T cells by regulating Bcl-2 expression and its cellular localization. *EMBO J.* 18, 3419–3430. <https://doi.org/10.1093/emboj/18.12.3419>.
40. Collora, J.A., and Ho, Y.C. (2023). Integration site-dependent HIV-1 promoter activity shapes host chromatin conformation. *Genome Res.* 33, 891–906. <https://doi.org/10.1101/gr.277698.123>.
41. Pedersen, S.F., Collora, J.A., Kim, R.N., Yang, K., Razmi, A., Catalano, A.A., Yeh, Y.J., Mounzer, K., Tebas, P., Montaner, L.J., et al. (2022). Inhibition of a chromatin and transcription modulator, SLTM, increases HIV-1 reactivation identified by a CRISPR inhibition screen. *J. Virol.* 96, e0057722. <https://doi.org/10.1128/jvi.00577-22>.
42. Yeh, Y.J., Jenike, K.M., Calvi, R.M., Chiarella, J., Hoh, R., Deeks, S.G., and Ho, Y.C. (2020). Filgotinib suppresses HIV-1-driven gene transcription by inhibiting HIV-1 splicing and T cell activation. *J. Clin. Invest.* 130, 4969–4984. <https://doi.org/10.1172/JCI137371>.
43. Chun, T.W., Justement, J.S., Lempicki, R.A., Yang, J., Dennis, G., Hallahan, C.W., Sanford, C., Pandya, P., Liu, S., McLaughlin, M., et al. (2003). Gene expression and viral production in latently infected, resting CD4+ T cells in viremic versus aviremic HIV-infected individuals. *Proc. Natl. Acad. Sci. USA* 100, 1908–1913. <https://doi.org/10.1073/pnas.0437640100>.
44. Holt, O., Kanno, E., Bossi, G., Booth, S., Daniele, T., Santoro, A., Arico, M., Saegusa, C., Fukuda, M., and Griffiths, G.M. (2008). Slp1 and Slp2-a localize to the plasma membrane of CTL and contribute to secretion from the immunological synapse. *Traffic* 9, 446–457. <https://doi.org/10.1111/j.1600-0854.2008.00714.x>.
45. Tokarev, A., McKinnon, L.R., Pagliuzza, A., Siro, A., Omole, T.E., Kroon, E., Chomchey, N., Phanuphak, N., Schuetz, A., Robb, M.L., et al. (2020). Preferential infection of $\alpha 4\beta 7$ + memory CD4+ T cells during early acute human immunodeficiency virus type 1 infection. *Clin. Infect. Dis.* 71, e735–e743. <https://doi.org/10.1093/cid/ciaa497>.
46. Iglesias-Ussel, M., Vandergeeten, C., Marchionni, L., Chomont, N., and Romero, F. (2013). High levels of CD2 expression identify HIV-1 latently infected resting memory CD4+ T cells in virally suppressed subjects. *J. Virol.* 87, 9148–9158. <https://doi.org/10.1128/JVI.01297-13>.
47. Li, X., Liu, Z., Li, Q., Hu, R., Zhao, L., Yang, Y., Zhao, J., Huang, Z., Gao, H., Li, L., et al. (2019). CD161(+) CD4(+) T cells harbor clonally expanded replication-competent HIV-1 in antiretroviral therapy-suppressed individuals. *mBio* 10. <https://doi.org/10.1128/mBio.02121-19>.
48. Rocha-Perugini, V., Suárez, H., Álvarez, S., López-Martín, S., Lenzi, G.M., Vences-Catalán, F., Levy, S., Kim, B., Muñoz-Fernández, M.A., Sánchez-Madrid, F., et al. (2017). CD81 association with SAMHD1 enhances HIV-1 reverse transcription by increasing dNTP levels. *Nat. Microbiol.* 2, 1513–1522. <https://doi.org/10.1038/s41564-017-0019-0>.
49. Ho, Y.C., Shan, L., Hosmane, N.N., Wang, J., Laskey, S.B., Rosenbloom, D.I., Lai, J., Blankson, J.N., Siliciano, J.D., and Siliciano, R.F. (2013). Replication-competent noninduced proviruses in the latent reservoir increase barrier to HIV-1 cure. *Cell* 155, 540–551. <https://doi.org/10.1016/j.cell.2013.09.020>.
50. Lazarian, G., Yin, S., Ten Hacken, E., Sewastianik, T., Uduman, M., Font-Tello, A., Gohil, S.H., Li, S., Kim, E., Joyal, H., et al. (2021). A hotspot mutation in transcription factor IKZF3 drives B cell neoplasia via transcriptional dysregulation. *Cancer Cell* 39, 380–393.e8. <https://doi.org/10.1016/j.ccell.2021.02.003>.
51. Krönke, J., Udeshi, N.D., Narla, A., Grauman, P., Hurst, S.N., McConkey, M., Svinkina, T., Heckl, D., Comer, E., Li, X., et al. (2014). Lenalidomide causes selective degradation of IKZF1 and IKZF3 in multiple myeloma cells. *Science* 343, 301–305. <https://doi.org/10.1126/science.1244851>.
52. Satpathy, A.T., Granja, J.M., Yost, K.E., Qi, Y., Meschi, F., McDermott, G.P., Olsen, B.N., Mumbach, M.R., Pierce, S.E., Corces, M.R., et al. (2019). Massively parallel single-cell chromatin landscapes of human immune cell development and intratumoral T cell exhaustion. *Nat. Biotechnol.* 37, 925–936. <https://doi.org/10.1038/s41587-019-0206-z>.
53. Giles, J.R., Manne, S., Freilich, E., Oldridge, D.A., Baxter, A.E., George, S., Chen, Z., Huang, H., Chilukuri, L., Carberry, M., et al. (2022). Human epigenetic and transcriptional T cell differentiation atlas for identifying functional T cell-specific enhancers. *Immunity* 55, 557–574.e7. <https://doi.org/10.1016/j.immuni.2022.02.004>.
54. Yost, K.E., Satpathy, A.T., Wells, D.K., Qi, Y., Wang, C., Kageyama, R., McNamara, K.L., Granja, J.M., Sarin, K.Y., Brown, R.A., et al. (2019). Clonal replacement of tumor-specific T cells following PD-1 blockade. *Nat. Med.* 25, 1251–1259. <https://doi.org/10.1038/s41591-019-0522-3>.
55. Cheng, H., Pui, H.-p., Lentini, A., Kolbeinsdóttir, S., Andrews, N., Pei, Y., Reinius, B., Deng, Q., and Enge, M. (2021). Smart3-ATAC: a highly sensitive method for joint accessibility and full-length transcriptome analysis in single cells. Preprint at bioRxiv. <https://doi.org/10.1101/2021.12.02.470912>.
56. Dobin, A., Davis, C.A., Schlesinger, F., Drenkow, J., Zaleski, C., Jha, S., Batut, P., Chaisson, M., and Gingeras, T.R. (2013). STAR: ultrafast universal RNA-seq aligner. *Bioinformatics* 29, 15–21. <https://doi.org/10.1093/bioinformatics/bts635>.
57. Langmead, B., and Salzberg, S.L. (2012). Fast gapped-read alignment with Bowtie 2. *Nat. Methods* 9, 357–359. <https://doi.org/10.1038/nmeth.1923>.
58. Martin, M. (2011). Cutadapt removes adapter sequences from high-throughput sequencing reads. *EMBnet. J.* 17, 3. <https://doi.org/10.14806/ej.17.1.200>.

59. Li, H., Handsaker, B., Wysoker, A., Fennell, T., Ruan, J., Homer, N., Marth, G., Abecasis, G., and Durbin, R.; 1000 Genome Project Data Processing Subgroup (2009). The Sequence Alignment/Map format and SAMtools. *Bioinformatics* 25, 2078–2079. <https://doi.org/10.1093/bioinformatics/btp352>.
60. Robinson, J.T., Thorvaldsdóttir, H., Winckler, W., Guttman, M., Lander, E.S., Getz, G., and Mesirov, J.P. (2011). Integrative genomics viewer. *Nat. Biotechnol.* 29, 24–26. <https://doi.org/10.1038/nbt.1754>.
61. Hao, Y., Hao, S., Andersen-Nissen, E., Mauck, W.M., 3rd, Zheng, S., Butler, A., Lee, M.J., Wilk, A.J., Darby, C., Zager, M., et al. (2021). Integrated analysis of multimodal single-cell data. *Cell* 184, 3573–3587.e29. <https://doi.org/10.1016/j.cell.2021.04.048>.
62. Stuart, T., Srivastava, A., Madad, S., Lareau, C.A., and Satija, R. (2021). Single-cell chromatin state analysis with Signac. *Nat. Methods* 18, 1333–1341. <https://doi.org/10.1038/s41592-021-01282-5>.
63. Korsunsky, I., Millard, N., Fan, J., Slowikowski, K., Zhang, F., Wei, K., Baglaenko, Y., Brenner, M., Loh, P.R., and Raychaudhuri, S. (2019). Fast, sensitive and accurate integration of single-cell data with Harmony. *Nat. Methods* 16, 1289–1296. <https://doi.org/10.1038/s41592-019-0619-0>.
64. Zappia, L., and Oshlack, A. (2018). Clustering trees: a visualization for evaluating clusterings at multiple resolutions. *GigaScience* 7. <https://doi.org/10.1093/gigascience/giy083>.
65. Zhang, Y., Liu, T., Meyer, C.A., Eeckhoute, J., Johnson, D.S., Bernstein, B.E., Nusbaum, C., Myers, R.M., Brown, M., Li, W., et al. (2008). Model-based analysis of ChIP-seq (MACS). *Genome Biol.* 9, R137. <https://doi.org/10.1186/gb-2008-9-9-r137>.
66. Rainer, J. (2017). EnsDb.Hsapiens.v86: ensembl based annotation package. (Bioconductor). <https://bioconductor.org/packages/release/data/annotation/html/EnsDb.Hsapiens.v86.html>.
67. Team TBD (2023). BSgenome.Hsapiens.UCSC.hg38: full genomic sequences for Homo sapiens (UCSC genome hg38). <https://bioconductor.org/packages/release/data/annotation/html/BSgenome.Hsapiens.UCSC.hg38.html>.
68. Carlson, M., Falcon, S., Pages, H., and Li, N. (2019). org.Hs.eg.db: genome wide annotation for Human. (Bioconductor). <https://bioconductor.org/packages/release/data/annotation/html/org.Hs.eg.db.html>.
69. Heinz, S., Benner, C., Spann, N., Bertolino, E., Lin, Y.C., Laslo, P., Cheng, J.X., Murre, C., Singh, H., and Glass, C.K. (2010). Simple combinations of lineage-determining transcription factors prime cis-regulatory elements required for macrophage and B cell identities. *Mol. Cell* 38, 576–589. <https://doi.org/10.1016/j.molcel.2010.05.004>.
70. Tan, G., and Lenhard, B. (2016). TFBSTools: an R/bioconductor package for transcription factor binding site analysis. *Bioinformatics* 32, 1555–1556. <https://doi.org/10.1093/bioinformatics/btw024>.
71. Schep, A.N., Wu, B., Buenrostro, J.D., and Greenleaf, W.J. (2017). chromVAR: inferring transcription-factor-associated accessibility from single-cell epigenomic data. *Nat. Methods* 14, 975–978. <https://doi.org/10.1038/nmeth.4401>.
72. Castro-Mondragon, J.A., Riudavets-Puig, R., Rauluseviciute, I., Lemma, R.B., Turchi, L., Blanc-Mathieu, R., Lucas, J., Boddie, P., Khan, A., Manosalva Pérez, N., et al. (2022). JASPAR 2022: the 9th release of the open-access database of transcription factor binding profiles. *Nucleic Acids Res.* 50, D165–D173. <https://doi.org/10.1093/nar/gkab1113>.
73. Mulè, M.P., Martins, A.J., and Tsang, J.S. (2022). Normalizing and denoising protein expression data from droplet-based single cell profiling. *Nat. Commun.* 13, 2099. <https://doi.org/10.1038/s41467-022-29356-8>.
74. Liu, Y., and Xie, J. (2020). Cauchy combination test: a powerful test with analytic p-value calculation under arbitrary dependency structures. *J. Am. Stat. Assoc.* 115, 393–402. <https://doi.org/10.1080/01621459.2018.1554485>.
75. Alexa, A., and Rahnenfuhrer, J. (2022). topGO: enrichment analysis for gene ontology. (Bioconductor). <https://bioconductor.org/packages/release/bioc/html/topGO.html>.
76. Korotkevich, G., Sukhov, V., and Sergushichev, A. (2019). Fast gene set enrichment analysis. Preprint at bioRxiv. <https://doi.org/10.1101/060012>.
77. Dolgalev, I. (2022). msigdb: MSigDB gene sets for multiple organisms in a tidy data format. (GitHub). <https://github.com/igordot/msigdb>.
78. R Core Team (2021). R: A Language and Environment for Statistical Computing (R Foundation for Statistical Computing).
79. Xu, Z., Heidrich-O'Hare, E., Chen, W., and Duerr, R.H. (2022). Comprehensive benchmarking of CITE-seq versus DOGMA-seq single cell multimodal omics. *Genome Biol.* 23, 135. <https://doi.org/10.1186/s13059-022-02698-8>.
80. Stuart, T., Butler, A., Hoffman, P., Hafemeister, C., Papalexi, E., Mauck, W.M., 3rd, Hao, Y., Stoeckius, M., Smibert, P., and Satija, R. (2019). Comprehensive integration of single-cell data. *Cell* 177, 1888–1902.e21. <https://doi.org/10.1016/j.cell.2019.05.031>.
81. McGinnis, C.S., Patterson, D.M., Winkler, J., Conrad, D.N., Hein, M.Y., Srivastava, V., Hu, J.L., Murrow, L.M., Weissman, J.S., Werb, Z., et al. (2019). MULTI-seq: sample multiplexing for single-cell RNA sequencing using lipid-tagged indices. *Nat. Methods* 16, 619–626. <https://doi.org/10.1038/s41592-019-0433-8>.
82. ENCODE Project Consortium, Moore, J.E., Purcaro, M.J., Pratt, H.E., Epstein, C.B., Shores, N., Adrian, J., Kawli, T., Davis, C.A., Dobin, A., et al. (2020). Expanded encyclopaedias of DNA elements in the human and mouse genomes. *Nature* 583, 699–710. <https://doi.org/10.1038/s41586-020-2493-4>.
83. Nassar, L.R., Barber, G.P., Benet-Pagès, A., Casper, J., Clawson, H., Diekhans, M., Fischer, C., Gonzalez, J.N., Hinrichs, A.S., Lee, B.T., et al. (2023). The UCSC Genome Browser database: 2023 update. *Nucleic Acids Res.* 51, D1188–D1195. <https://doi.org/10.1093/nar/gkac1072>.
84. Heumos, L., Schaar, A.C., Lance, C., Litinetskaya, A., Drost, F., Zappia, L., Lücken, M.D., Strobl, D.C., Henao, J., Curion, F., et al. (2023). Best practices for single-cell analysis across modalities. *Nat. Rev. Genet.* 24, 550–572. <https://doi.org/10.1038/s41576-023-00586-w>.
85. Li, H., and Durbin, R. (2009). Fast and accurate short read alignment with Burrows-Wheeler transform. *Bioinformatics* 25, 1754–1760. <https://doi.org/10.1093/bioinformatics/btp324>.
86. Benjamini, Y., and Hochberg, Y. (1995). Controlling the false discovery rate: a practical and powerful approach to multiple testing. *J. R. Stat. Soc. B* 57, 289–300.
87. Kazer, S.W., Aicher, T.P., Muema, D.M., Carroll, S.L., Ordovas-Montanes, J., Miao, V.N., Tu, A.A., Ziegler, C.G.K., Nyquist, S.K., Wong, E.B., et al. (2020). Integrated single-cell analysis of multicellular immune dynamics during hyperacute HIV-1 infection. *Nat. Med.* 26, 511–518. <https://doi.org/10.1038/s41591-020-0799-2>.
88. Subramanian, A., Tamayo, P., Mootha, V.K., Mukherjee, S., Ebert, B.L., Gillette, M.A., Paulovich, A., Pomeroy, S.L., Golub, T.R., Lander, E.S., et al. (2005). Gene set enrichment analysis: a knowledge-based approach for interpreting genome-wide expression profiles. *Proc. Natl. Acad. Sci. USA* 102, 15545–15550. <https://doi.org/10.1073/pnas.0506580102>.
89. Liberzon, A., Subramanian, A., Pinchback, R., Thorvaldsdóttir, H., Tamayo, P., and Mesirov, J.P. (2011). Molecular signatures database (MSigDB) 3.0. *Bioinformatics* 27, 1739–1740. <https://doi.org/10.1093/bioinformatics/btr260>.
90. Chagoyen, M., and Pazos, F. (2010). Quantifying the biological significance of gene ontology biological processes—implications for the analysis of systems-wide data. *Bioinformatics* 26, 378–384. <https://doi.org/10.1093/bioinformatics/btp663>.
91. Tirosh, I., Izar, B., Prakadan, S.M., Wadsworth, M.H., 2nd, Treacy, D., Trombetta, J.J., Rotem, A., Rodman, C., Lian, C., Murphy, G., et al. (2016). Dissecting the multicellular ecosystem of metastatic melanoma by single-cell RNA-seq. *Science* 352, 189–196. <https://doi.org/10.1126/science.1240501>.

STAR★METHODS

KEY RESOURCES TABLE

REAGENT or RESOURCE	SOURCE	IDENTIFIER
Antibodies		
TotalSeq-A Human Universal Cocktail V1.0	BioLegend	CAT # 399907; RRID: AB_2888692
TotalSeq-A CD30, clone BY88	BioLegend	CAT # 333913; RRID: AB_2749966
TotalSeq-A CD197, clone G043H7	BioLegend	CAT # 353247; RRID: AB_2750357
TotalSeq-A anti-human Hashtag 1	BioLegend	CAT # 394601; RRID: AB_2750015
TotalSeq-A anti-human Hashtag 2	BioLegend	CAT # 394603; RRID: AB_2750016
TotalSeq-A anti-human Hashtag 3	BioLegend	CAT # 394605; RRID: AB_2750017
TotalSeq-A anti-human Hashtag 4	BioLegend	CAT # 394607; RRID: AB_2750018
TotalSeq-A anti-human Hashtag 5	BioLegend	CAT # 394609; RRID: AB_2750019
TotalSeq-A anti-human Hashtag 6	BioLegend	CAT # 394611; RRID: AB_2750020
CD4-APC, clone OKT4	BioLegend	CAT # 317416; RRID: AB_571945
HIV-1 core antigen-RD1, clone KC57	Beckman Coulter	CAT # 6604667
IKZF3-BV421, clone 14C4C97	BioLegend	CAT # 371010; RRID: AB_2616875
Ki67-BUV395, clone 56	BD Biosciences	CAT # 564071
Bacterial and virus strains		
NL4-3	NIH HIV Reagents Program	CAT # ARP-114
10CB6	Ho et al. ⁴⁹	N/A
16CB3	Ho et al. ⁴⁹	N/A
20CB3	Ho et al. ⁴⁹	N/A
Biological samples		
Blood samples from Sabes Cohort (Table S1)	This study and Collora and Ho ⁴⁰	N/A
Chemicals, peptides, and recombinant proteins		
Digitonin 5%	ThermoFisher	CAT # BN2006
xGen Lockdown Reagents	IDT	CAT # 1072281
Protector RNase Inhibitor	Sigma-Aldrich	PN-3335399001
Human Cot-1 DNA	Invitrogen	CAT # 15279011
Dynabeads M-270 Streptavidin	Invitrogen	CAT # 65306
Human TruStain FcX	BioLegend	CAT # 422302; RRID: AB_2818986
LIVE/DEAD Fixable Near-IR Dead Cell Stain Kit	Thermo Fisher	CAT # L10119
Human BD Fc Block	BD Biosciences	CAT # 564219
eBioscience Foxp3 / Transcription Factor Staining Buffer	Thermo Fisher	CAT # 00-5523-00
BD Pharmingen Purified Mouse Anti-Human CD3, Clone UCHT1	BD Biosciences	CAT # 555330
BD Pharmingen™ Purified Mouse Anti-Human CD28, Clone CD28.2	BD Biosciences	CAT # 556620
Recombinant Human Interleukin-2	Conn Stem	CAT # C1002
Critical commercial assays		
Chromium Next GEM Single Cell Multiome ATAC + Gene Expression Reagent Bundle	10x Genomics	PN-1000283
Chromium Nuclei Isolation Kit with RNase Inhibitor	10x Genomics	PN-1000494
Chromium Next GEM Chip J Single Cell	10x Genomics	PN-1000230

(Continued on next page)

Continued

REAGENT or RESOURCE	SOURCE	IDENTIFIER
Dual Index Kit TT Set A	10x Genomics	PN-1000215
Single Index Kit N Set A	10x Genomics	PN-1000212
3' Feature Barcode Kit	10x Genomics	PN-1000262
EasySeq Dead Cell Removal Annexin V kit	STEMCELL	CAT # 17899
EasySep Human CD4+ T Cell Isolation Kit	STEMCELL	CAT # 17952
Memory CD4+ T cell Isolation Kit	Miltenyi Biotec	CAT # 130-091-893
Kapa Hifi Hotstart Readymix	Kapa Biosystems	CAT # KK2602
SPRIselect 5 mL reagent kit	Beckman Coulter	CAT # B23317
LIVE/DEAD Fixable Near-IR–Dead Cell Stain Kit	Thermo Fisher	L34975

Deposited data

DOGMAseq memory CD4+ T cells	This study	GEO: GSE239916
------------------------------	------------	----------------

Oligonucleotides

ADT: * indicates phosphorothioate: CCTTGGCACCCGAGAATT*C*C	Mimitou et al. ²⁷	DOGMAseq
HTO: * indicates phosphorothioate: GTGACTGGAGTTCAGACGTGTGC*T*C	Mimitou et al. ²⁷	DOGMAseq
SIPCR: Dual index common primer for ADT/HTO	This study, see Methods S1	DOGMAseq
RPX: Dual index common primer for ADT	This study, see Methods S1	DOGMAseq
D7X: Dual index common primer for HTO	This study, see Methods S1	DOGMAseq

Software and algorithms

CellRanger-Arc v2.0	10x Genomics	https://support.10xgenomics.com/single-cell-multiome-atac-gex/software/pipelines/latest/installation#download
CellRanger v5.0.1	10x Genomics	https://support.10xgenomics.com/single-cell-gene-expression/software/downloads/latest
STAR v2.7	Dobin et al. ⁵⁶	https://github.com/alexdobin/STAR
Bowtie 2 v2.4.2	Langmead and Salzberg ⁵⁷	https://github.com/BenLangmead/bowtie2
Cutadapt v4.2	Martin ⁵⁸	https://cutadapt.readthedocs.io/en/stable/installation.html
Seqtk v1.3	https://github.com/lh3/seqtk	https://anaconda.org/bioconda/seqtk
SAMtools v1.16.1	Li et al. ⁵⁹	https://anaconda.org/bioconda/samtools
IGV v2.16	Robinson et al. ⁶⁰	https://software.broadinstitute.org/software/igv/download
Seurat v4.3.0	Hao et al. ⁶¹	https://cran.r-project.org/web/packages/Seurat/index.html
Signac v1.7	Stuart et al. ⁶²	https://cran.r-project.org/web/packages/Signac/index.html
Harmony v3.8	Korsunsky et al. ⁶³	https://portals.broadinstitute.org/harmony/articles/quickstart.html
Clustree v0.5.0	Zappia and Oshlack ⁶⁴	https://cran.r-project.org/web/packages/clustree/index.html
MACS3 v3.0.0	Zhang et al. ⁶⁵	https://github.com/macs3-project/MACS
EnsDb.Hsapiens.v86 v3.16	Rainer ⁶⁶	https://bioconductor.org/packages/release/data/annotation/html/EnsDb.Hsapiens.v86.html
BSgenome.Hsapiens.UCSC.hg38 v1.4.5	Team TBD ⁶⁷	https://bioconductor.org/packages/release/data/annotation/html/BSgenome.Hsapiens.UCSC.hg38.html
org.Hs.eg.db v3.8.2	Carlson et al. ⁶⁸	https://bioconductor.org/packages/release/data/annotation/html/org.Hs.eg.db.html
HOMER v4.11	Heinz et al. ⁶⁹	http://homer.ucsd.edu/homer/introduction/install.html
TFBSTools v3.16	Tan and Lenhard ⁷⁰	https://bioconductor.org/packages/release/bioc/html/TFBSTools.html
chromVAR v1.18	Schep et al. ⁷¹	http://bioconductor.org/packages/release/bioc/html/chromVAR.html
JASPAR2022	Castro-Mondragon et al. ⁷²	https://bioconductor.org/packages/release/data/annotation/html/JASPAR2022.html

(Continued on next page)

Continued

REAGENT or RESOURCE	SOURCE	IDENTIFIER
DSB v1.0.3	Mulè et al. ⁷³	https://cran.r-project.org/web/packages/dsb/index.html
ACAT v0.91	Liu and Xie ⁷⁴	https://github.com/yaowuliu/ACAT
WGCNA v1.70	Langfelder and Horvath ³⁷	https://cran.r-project.org/web/packages/WGCNA/index.html
topGO v2.48	Alexa and Rahnenfuhrer ⁷⁵	https://bioconductor.org/packages/release/bioc/html/topGO.html
fgSEA v1.22	Korotkevich et al. ⁷⁶	https://bioconductor.org/packages/release/bioc/html/fgsea.html
msigdb v7.5.1	Dolgalev ⁷⁷	https://cran.r-project.org/web/packages/msigdb/vignettes/msigdb-intro.html
R version 4.0.5	R Core Team ⁷⁸	https://www.r-project.org/
FlowJo V10.8.1	FlowJo	https://www.flowjo.com/solutions/flowjo/downloads
Analysis scripts	This study	Zenodo: https://doi.org/10.5281/zenodo.8351067

RESOURCE AVAILABILITY

Lead contact

Further information and requests for resources and reagents should be directed to and will be fulfilled by the lead contact, Ya-Chi Ho (ya-chi.ho@yale.edu).

Materials availability

This study did not generate new reagents.

Data and code availability

- Single-cell DOGMA-seq sequencing data have been deposited at Gene Expression Omnibus and is publicly available. Accession numbers are listed in the [key resources table](#).
- All code used to generate results have been deposited on Github and is publicly available. DOI of the analysis scripts is listed in the Software and Algorithms section of the [key resources table](#).
- Any additional information required to reanalyze the data reported in this paper is available from the [lead contact](#) upon request.

EXPERIMENTAL MODELS AND STUDY PARTICIPANT DETAILS

Participant details

The demographics of six people living with HIV-1 and four age, sex, and ethnicity-matched uninfected study participants from the Sabes study^{28,29} are detailed in [Table S1](#). The Sabes study was reviewed and approved by the Institutional Review Board (IRB) of the Fred Hutchinson Cancer Research Center, the non-government organization Asociación Civil Impacta Salud y Educación, Lima, Peru (Impacta), and the ethics committee of Impacta and the Peruvian National Institute of Health. All participants provided informed consent, including consent for storage and future use of specimens.

From the six participants living with HIV-1, we obtained paired blood samples during viremia and after viral suppression under the Sabes study protocol.^{28,29} Of note, the six participants living with HIV-1 were the same participants participated in our previous study.¹³ Briefly, uninfected study participants were tested monthly with third-generation HIV-1 immunoassays. Seronegative samples were tested for HIV-1 RNA by pooled nucleic acid amplification (NAAT) assays. After specimens were collected during viremia, participants were randomly assigned to immediate and deferred ART (either EFV/FTC/TDF or EGV/COBI/TFC/TDF) initiation arms. In the immediate ART arm, ART was initiated at the baseline visit (< 2 months of estimated date of infection). In the deferred arm, ART was initiated 24 weeks after the baseline visit (6 to 8 months after estimated date of infection). The virally suppressed specimens were taken after one year of suppressive ART (plasma viral load < 200 copies/mL at 6 months prior to blood sampling). We obtained blood samples from 3 participants from the immediate ART arm (SI236, SI640, SI829) and 3 participants from the deferred arm (SD739, SD799, SD910) to ensure that our results are generalizable to participants who started ART early (<6 months) versus late (>6 months). Uninfected study participants were identified at the initial HIV-1 screening (seronegative by whole blood HIV-1 antibody immunoassay followed by NAAT test for HIV-1 RNA) and re-tested monthly for a 2-year period.

Experimental models

For *in vitro* models, we established four HIV-1-infected and stably integrated Jurkat cell lines (using single-round HIV-1 reporter virus HIV-1-d6-GFP), each having known HIV-1 integration sites in actively transcribed genes as described previously.^{10,41,42} For flow

cytometry, primary CD4⁺ T cells and primary memory CD4⁺ T cells from de-identified uninfected individuals (New York Blood Center) were infected with replication-competent NL4-3 reference strain and three R5-tropic reconstructed clinical isolates 10CB6, 16CB3, and 20CB3 as previously reported⁴⁹ for 3 days.

METHOD DETAILS

Memory CD4⁺ T cell isolation, cell hashing for pooling, and cell staining with barcoded antibodies

Aliquots of 20 million viably frozen peripheral blood mononuclear cells (PBMC) were thawed. Dead cells were removed by immunomagnetic depletion using EasySep Dead Cell Removal Annexin V kit (STEMCELL Technologies, catalog no. 17899) following vendor-recommended protocols. Then, memory CD4⁺ T cells were purified by immunomagnetic negative selection using Memory CD4⁺ T cell Isolation Kit removing CD45RA⁺ cells and non-CD4⁺ T cells (Miltenyi Biotec, catalog no. 130-091-893).

To pool samples, purified memory CD4⁺ T cells from participants were each stained with uniquely barcoded TotalSeq-A hashing antibodies (BioLegend) and incubated at 4°C for 30 minutes. Cells were washed with 1 mL wash media and pelleted (500 *g* for 5 minutes at 4°C) for a total of 3 washes. Cells were then resuspended in 1 mL wash media and pooled (6 viremic samples, 6 virally suppressed samples, and 4 uninfected samples were pooled separately).

The pooled samples were stained with a panel of 154 cell surface protein and 9 isotype control antibodies included in TotalSeq-A Human Universal Cocktail (V1.0, BioLegend, catalog no. 399907). We additionally stained for CD30 (clone BY88, BioLegend, catalog no. 333913) and CD197 (CCR7, clone G043H7, BioLegend, catalog no. 353247) antibodies that were not included in the Universal Cocktail (for a total of 156 surface proteins). All barcoded antibodies were prepared following recommended protocols. The pooled samples (~1.5 × 10⁶ cells in each viremic and virally suppressed pools) were resuspended in 61.5 μL staining buffer and incubated with 7.5 μL Human TruStain FcX (BioLegend, catalog no. 422302) at 4°C for 10 minutes. Next, 3 μL of CD197 antibody was added to each sample followed by incubation at 37°C for 10 minutes then chilled on ice for 5 minutes. Next, 3 μL of CD30 antibody and 75 μL of TotalSeq-A Human Universal Cocktail (3 tests) were added to each sample at 4°C for 30 minutes. Cells were washed with 1 mL wash media and pelleted (500 *g* for 5 minutes at 4°C) for a total of 3 washes. The pooled uninfected sample (~0.5 × 10⁶ cells) were stained with the same protocols at one third volumes.

Cell permeabilization

After antibody staining, cells were permeabilized without fixation with 0.01% digitonin solution according to the DOGMA-seq protocol.²⁷ The digitonin lysis buffer (0.01% DIG, 20 mM Tris-HCl pH 7.4, 150 mM NaCl, 3 mM MgCl₂ and 2 U/μL RNase inhibitor) and digitonin wash buffer (20 mM Tris-HCl pH 7.4, 150 mM NaCl, 3 mM MgCl₂ and 1 U/μL RNase inhibitor) were prepared and chilled on ice. Antibody-stained cells were resuspended in 100 μL digitonin lysis buffer on ice for 5 minutes then washed with 1 mL digitonin wash buffer and pelleted (500 *g* for 5 minutes at 4°C). Cells were then resuspended in 150 μL digitonin wash buffer and counted using Trypan blue staining to verify permeabilization.

DOGMA-seq library preparation and sequencing

Cells were processed according to the Chromium Next GEM Single Cell Multiome ATAC + Gene Expression protocol (10x documentation GC000338 Rev A) with modifications described in the original DOGMA-seq protocol.²⁷ We chose the digitonin (DIG) protocol instead of the low-loss lysis (LLL) protocol for its lower mitochondrial DNA capture (0.04% versus 25.3%) and to increase ATAC-seq-based HIV-1 DNA capture. The digitonin protocol showed superior performance in a separate benchmarking study.⁷⁹ See Document S1 for specific protocol modifications and all primers used (Antibody-Derived Tag [ADT] and Hashtag Oligo [HTO], additive primers, SI-PCR and RPX primers, and D7X primers). Pooled samples were sequenced in multiple 10x runs (*n* = 6, 3, 1 for virally suppressed, viremic, and uninfected samples, respectively). Per run, 41,000 cells were loaded into the 10x Genomics Chromium Controller with a target barcode recovery of 24,000 and singlet recovery of 19,400. Libraries were sequenced on NovaSeq 6000 with a target of ~50,000 ATAC read pairs (500 million per run), ~40,000 RNA read pairs (400 million per run), and ~10,000 ADT/HTO barcode reads (100 million per run) for a total of 100,000 reads per cell. Because our goal was to capture rare HIV-1 reads, our sequencing specifications were two times the recommended sequencing requirements for Single Cell Multiome (10x Genomics, 25,000 ATAC read pairs/cell and 20,000 RNA read pairs/cell) and for CITE-seq (10x Genomics, 20,000 RNA read pairs/cell and 5,000 ADT reads/cell) to ensure good sequencing saturation (Table S2) and to increase sensitivity of HIV-1 read detection. We recovered on average 13,229 cells that passed CellRanger knee call, and an average of 50,131 ATAC read pairs, 48,223 RNA read pairs, and 1,049 usable Antibody barcodes per cell (Table S2). The final libraries were quantified using a Qubit dsDNA HS Assay Kit (Invitrogen) and a High Sensitivity D1000 DNA kit on Agilent 2200 TapeStation system.

Single-cell analyses

DOGMA-seq data pre-processing

Raw sequence files from Chromium Single Cell Multiome ATAC + Gene Expression sequencing (ATAC & RNA) were demultiplexed with CellRanger-Arc v2 (10x Genomics) mkfastq and reads were aligned to the hg38 reference genome using CellRanger-Arc count. Raw sequence files from Single Cell Gene Expression with Feature Barcoding (RNA & ADT/HTO) were demultiplexed with CellRanger v5 (10x Genomics) mkfastq and reads were aligned to the hg38 reference genome using CellRanger count. Cell barcodes that passed knee call by CellRanger and CellRanger-Arc were used for downstream analyses.

Removal of low-quality cells and demultiplexing

Cells that passed knee call in filtered count matrices were used to initialize Seurat Objects.^{61,80} The objects were filtered by RNA to remove cells with $\geq 25\%$ mitochondrial gene content, ≤ 200 genes, and RNA UMI counts ≤ 500 or $\geq 10,000$. Of note, mitochondrial DNA and RNA are inevitably captured in the DOGMA-seq method. Therefore, we used a higher mitochondrial gene cutoff than RNA-based capture such as ECCITE-seq. The objects were then filtered by ATAC to remove cells with ≤ 500 unique ATAC fragments, nucleosome signal strength ≥ 1 , transcription start site (TSS) enrichment score ≤ 2 , and ATAC UMI counts ≤ 500 or $\geq 100,000$.

To remove doublet and negative cells by hashtag oligos, the HTO data was normalized by centered log-ratio (CLR) transformation. Cells from individual sequencing runs were demultiplexed based on HTO enrichment using MULTISEQDemux⁸¹ implemented in Seurat v4,⁸⁰ with automated threshold finding set to TRUE, range of quantile values from 0.1 to 0.999, and maximum number of iterations set to 10. Hashtag-defined doublets and barcodes without hashtag assignment were discarded. ATAC & RNA Seurat objects from individual sequencing runs were then merged by unified set of ATAC peaks across datasets using Signac v1.7.⁶² To create a Seurat object containing all three assays (ATAC, RNA, and protein), the ATAC & RNA object was merged with the RNA & protein object by shared GEX barcode and 10x run.

Data normalization, batch effect correction by integration, and data visualization

We normalized and corrected for batch effect for each ATAC, RNA, and ADT (protein expression) data to account for technical variation from separate 10x runs. The ATAC data was normalized by latent semantic indexing [LSI: term frequency-inverse document frequency (TF-IDF) followed by singular value decomposition (SVD)] in Signac v1.7⁶² to correct for differences in cellular sequencing depth and across peaks to assign higher values to rare peaks. To correct for batch effects between ATAC datasets, we performed integration by identifying pairwise anchors (pairwise correspondences between single cells across datasets) using FindIntegrationAnchors in Seurat v4 with reciprocal LSI reduction method. The RNA data were normalized by LogNormalize (feature expression measurement divided by the total expression in each cell multiplied by a scale factor of 10,000 then natural-log transformed) in Seurat v4. To correct for batch effects between RNA datasets, we performed PCA before integration by Harmony.⁶³ Finally, the ADT data was normalized across cells using the centered log ratio (CLR) method in Seurat v4. To correct for batch effects between ADT datasets, we performed integration by identifying pairwise anchors with reciprocal PCA reduction method.

We next clustered the cells by shared nearest neighbor space and visualized them in low dimensional projections. To visualize the integrated ATAC data in low dimensional space, the LSI coordinates were integrated across the dataset using IntegrateEmbeddings (Signac v1.7) with ATAC integration anchors and visualized using UMAP. To visualize the integrated RNA and the integrated ADT data, the batch corrected data were scaled and centered followed by PCA dimensionality reduction, and cells were visualized in UMAP. To cluster the cells, we simultaneously considered all 3 modalities (ATAC, RNA, and ADT) that were independently preprocessed by performing weighted-nearest neighbor (WNN) analysis.⁶¹ Twenty nearest neighbors for each cell were calculated based on the weighted combination of ATAC, RNA, and protein similarities using FindMultiModalNeighbors in Seurat v4 with integrated ATAC LSI, Harmony, and integrated ADT PCA components (2:30, 1:13, and 1:10 numbers of components, respectively). Weighted nearest neighbors were used in cluster determination in Seurat v4 with the smart local moving (SLM) algorithm and an optimized resolution parameter of 0.6 as determined by Clustree evaluation⁶⁴ and visualized by UMAP.

Downstream data processing

Gene accessibility was measured in Signac v1.7 (determined as number of fragments mapping to each gene coordinate extended by 2kb upstream region to include promoter regions). Gene accessibility data were normalized by LogNormalize in Seurat v4 to adjust for gene accessibility measurements by the total accessibility in each cell multiplied by median count as scale factor.

For differentially accessible ATAC peak analyses, ATAC peaks called by CellRanger-Arc were recalled using Model-based Analysis of ChIP-Seq 3 (MACS3) v3.0.0⁶⁵ with default parameters in Signac v1.7. Peaks were assigned to genes by distance to nearest TSS and the detailed genomic annotations of the regions occupied by center of peaks were determined by annotatePeaks.pl with hg38 reference genome using HOMER v4.11.⁶⁹ In-peak candidate cis-regulatory elements were predicted by ENCODE Registry of candidate cis-Regulatory Elements (cCREs)⁸² All predicted TF-binding motifs found in accessible peaks were obtained using genome.ucsc.edu with JASPAR Transcription Factors Track Settings. Transcription factor binding motifs were retrieved from JASPAR CORE 2022⁷² collection and all predicted transcription factor binding sites found in accessible regions met prediction confidence of $P < 0.05$ as determined by PWMScan and visualized in UCSC Genome Browser.⁸³ Transcription factor accessibility deviations (measured in Z-scores) were computed using chromVAR v1.18⁷¹ with human genome reference hg38 and transcription factor binding motif references from the JASPAR2022 Core Vertebrates database.⁷²

For protein expression datasets, we normalized the ADT data and performed two steps of corrections for protein expression composition biases. For all analyses of differentially expressed surface proteins, ADT data was normalized and denoised using DSB v1.0⁷³ to correct for ambient unbound protein noise by considering protein expression in empty droplets and to correct for cell-to-cell technical noise by shared variance between isotype controls and background protein counts (denoise.counts = TRUE, use.isotype.control = TRUE). For all visualizations of protein expression trends (in dot plot), we normalized the data across cells (margin = 2) using NormalizeData in Seurat v4 with centered-log-ratio (CLR) transformation method as this approach maintains authentic values for fractions of cells expressing the protein feature in dot plots (versus DSB transformation which reflects the standard deviation scores against ambient capture noise). Both DSB and CLR are standard normalization approaches that account for composition biases in single-cell ADT datasets,⁸⁴ with DSB values additionally correct for background noise⁷³ for a more statistically robust differential expression analysis (for volcano plots) but do not reflect true 0 count data (in dot plot). In the second steps, for all features used in comparisons between populations (or cells grouped by different conditions), the group mean expression of each

surface proteins was compared to that of its specific isotype controls by Two-Sample Z-test. A protein feature is kept for population comparisons if $Z > 2$ (2 standard deviation difference).

Cell subset identification

15 clusters of memory CD4⁺ T cells were distinguished by weighted nearest neighbor analysis, and cell subsets were manually annotated by accessibility of key transcriptional factors in the epigenomic landscape, then by RNA expression of marker genes in the transcriptional profile, then by differential ADT (surface protein) expression.

HIV-1⁺ cell identification

To identify HIV-1 RNA⁺ cells, HIV-1 transcripts were identified per cell barcode by mapping RNA reads to HXB2 (GenBank: K03455.1) reference sequence and participant autologous HIV-1 sequences (Table S3, mapping to autologous sequences was previously shown to increase mapping rate by approximately 20% and increase spliced HIV-1 RNA capture for these same participant samples¹³) using STAR v2.7⁵⁶ with a pipeline that we have previously established for ECCITE-seq.¹³ Briefly, STAR was run in two pass modes: first pass to identify and annotate splice sites in input HIV-1 reference genomes, and second pass to realign reads to annotated HXB2 genome. The maximum number of multiple alignments allowed was set to 100. Reads that mapped to multiple HIV-1 references or sites (e.g., LTR) were deduplicated. Barcodes and UMIs from associated Read 1 file were extracted and matched to mapped reads. To guard against index hopping and sequencing artifacts, cells with a minimum of 2 HIV-1 reads per barcode were considered positive. No false positive HIV-1 RNA⁺ cells were identified in uninfected participant samples ($n = 10,660$ cells).

To identify HIV-1 DNA⁺ cells, HIV-1 DNA fragments were identified per cell barcode by mapping adapter-trimmed mate-pair ATAC reads to participant autologous HIV-1 sequence and to HXB2 reference sequence using Bowtie 2 v2.4.2⁵⁷ in local alignment and -a (search for and report all alignments) modes. To account for *in vivo* hypermutation events and HIV-1 sequence diversity, we allowed for 1 mismatch (-N 1) per seed length of 10 (-L 10) during multi-seed alignment. All other parameters were kept at -very-sensitive pre-set (-D 20; -R 3; -i S,1,0.50). Reads that mapped to multiple HIV-1 references or sites (e.g., LTR) were deduplicated. Barcodes and UMIs from associated Read 2 file were then extracted and matched to mapped reads. To guard against false positive detection, all HIV-1-mapped reads were verified by matching to the Los Alamos HIV Sequence Database (<https://www.hiv.lanl.gov/>). Testing on 14,780 HIV-1-infected primary CD4⁺ T cells, our HIV-1 DNA alignment approach recovered 5,220 HIV-1 DNA⁺ cells (35.32% sensitivity) at 1 HIV-1 read per cell threshold and 4,197 HIV-1 DNA⁺ cells (28.40% sensitivity) at 2 HIV-1 reads per cell threshold. To guard against index hopping and sequencing artifacts, cells with a minimum of 2 HIV-1 reads per barcode were considered positive. No false positive HIV-1 DNA⁺ cells were identified in uninfected ATAC datasets ($n = 10,660$ and 9,560 cells in uninfected participant samples and uninfected Jurkat samples). We additionally performed alignment by BWA-MEM v0.7.17,⁸⁵ which was less sensitive than Bowtie2 for our datasets (capturing 90% – 95% HIV-1 reads identified by Bowtie2) and yielded no additional HIV-1 DNA reads.

Analyses of differential gene and peak, and transcription factor accessibility, RNA and surface protein expression

Differential gene and peak and transcription factor accessibility analyses and differential RNA and protein expression were performed using FindMarkers (comparisons of 2 groups) or FindAllMarkers (comparisons of > 2 groups) in Seurat v4, with the following specifications: 1) pseudocount.use = 1, 2) minimum percent of cells expressing the feature (min.pct) and 3) log₂ fold change (logfc.threshold) feature selection filter cutoffs as specified in figure legends. As intended by Seurat V4, only features that met 'min.pct' and 'logfc.threshold' cutoffs were retained, so that poorly expressed genes or genes having extremely low differential expression do not skew the differential expression results (i.e., the FDR-adjusted P value). Of note, no min.pct values were set for chromVAR deviation scores or DSB-normalized protein expression since they were Z-scores. For differential gene accessibility analyses, accessibility expression were normalized with LogNormalize method using a scale factor of median UMI count in each cell. The Wilcoxon Rank-sum test was used to determine fold change significance. For differential peak accessibility analyses, we added as latent variable the total number of in-peak UMIs to account for the effect of differential sequencing depth on the result. Logistic regression was used to determine fold change significance. For differential transcription factor accessibility analyses, the Wilcoxon Rank-sum test was used to determine significant differences of mean deviation scores. For differential gene expression analyses, RNA expression was normalized with LogNormalize method using a scale factor of 10,000. The Wilcoxon Rank-sum test was used to determine fold change significance. For differential surface protein expression analyses, ADT data was normalized by DSB. A protein feature was kept for comparison if its group mean expression is greater than the group mean expression of its isotype control with $Z > 2$ (2 standard deviation difference) by Two-Sample Z-test. The Wilcoxon Rank-sum test was used to determine fold change significance. To adjust for sample size for a fair comparison between groups when HIV-1⁺ cells were compared to HIV-1⁻ cells, HIV-1⁻ cell groups were downsized to match the same number of cells in HIV-1⁺ cell groups with 1,000 bootstrap replicates. The 1,000 *P* values were transformed to follow a standard Cauchy distribution and a combined *P* value is calculated as the weighted sum of Cauchy transformed *P* values.⁷⁴ For all comparisons, *P* values were corrected for multiple comparisons using the Benjamini-Hochberg (FDR) procedure.⁸⁶

The averaged expression for all significantly differentially expressed features shown in heatmaps and dot plots were calculated using feature-level scaled values (using ScaleData in Seurat v4: distribution of each feature is centered to mean of 0 and per-cell feature expression is the standard deviation from the mean) using all cells that belong to the cell clusters or conditions under comparison, so that all features can be shown on the same scale (all feature expression share the same scale). This scaling is applied for all features shown in heatmaps and dot plots (gene, protein, peak) except for transcription factor accessibility (which is in chromVAR Z-score). For all dot plot comparisons between HIV-1⁺ cells versus HIV-1⁻ cells, all features that were significantly upregulated in the HIV-1-infected cell groups during viremia were retained if they also had 'percent expressed' in significantly upregulated

group \geq 'percent expressed' in HIV-1-negative cell group in viremia, where 'percent expressed' is the percentage of cells in the group that express the feature (percentage of cells with feature count > 0).

Gene module identification by WGCNA, Gene Ontology (GO) analysis, and pathway enrichment by GSEA

Co-expressed gene programs were discovered through Weighted Gene Co-expression Network Analysis (WGCNA)³⁶ as previously described.⁸⁷ Briefly, Seurat object was split by condition of interest and the expression matrix of 50 genes most positively and negatively associated with the first < 10 principal components were used as input for WGCNA v1.70.³⁷ A soft power was selected as recommended where possible⁸⁷: the first power with a scale-free topology > 0.8 , but this soft power was reduced if fewer than 3 modules (gene programs) with a minimum gene size of 10 were identified. The vectorized topological overlap matrix (TOM) dissimilarity matrix was compared with 10,000 randomly generated and vectorized TOM dissimilarity matrices from the same gene list used for module discovery. A module was determined as significant if FDR-adjusted $P < 0.05$ (one-sided Wilcoxon rank-sum test) in at least 95% of 10,000 tests. Similar modules were merged using a dissimilarity threshold of 0.5 (MEDissThres = 0.5). See Table S2 for all WGCNA modules identified. To visualize gene pair co-expression, 36601 \times 36601 gene pair Pearson's correlation coefficients were determined using the corSparse function in qtlMatrix R package. For list of genes identified in WGCNA gene modules, we made a custom script to generate a pairwise gene expression Pearson's correlation coefficient heatmap for cells in each condition. Condition-specific heatmaps were merged along the diagonal split (highlighted in black) to provide a visual contrast of the degree of gene pair co-expression in each of the two conditions (no correlations were calculated for cells between conditions).

For GSEA, all 36,601 genes were ranked by \log_2 fold change in gene expression comparisons between groups. Gene ranks were used to determine significantly enriched gene sets and build enrichment plot using fGSEA v1.22 with default settings.⁷⁶ Queried gene sets were retrieved from MSigDB v2022.1^{88,89} using msigdb v7.5.1⁷⁷ (R package version 7.5.1). Specifically, a total of 111,635 reference gene sets from the H (hallmark), C2 (curated), and C7 (immunologic signature) collections were retrieved from MSigDB. Enrichment score for each gene set was measured by the weighted Kolmogorov–Smirnov statistic. Significance of enrichment scores was estimated by the nominal P value. A gene set was considered significantly enriched when $P < 0.05$.

For Gene Ontology analysis, we used all significantly differentially expressed genes to test for significant Gene Ontology terms using topGO v2.48⁷⁵ (R package version 2.48.0.) with Biology Process (GO:BP) subontology⁹⁰ and org.Hs.eg.db v3.8.2 (human genome wide annotation primarily based on mapping using Entrez Gene identifiers,⁶⁸ R package version 3.8.2). Gene Ontology terms were considered significant when $P < 0.01$ using Fisher's exact test. For Figure S6, Gene Ontology analysis was performed using all genes detected in WGCNA modules to test for significant GO terms in the H (hallmark), C2 (curated), GO (Gene Ontology), and C7 (immunologic signature) MSigDB v2022.1 collections as test references. The hypergeometric P value was calculated as the probability of randomly drawing k number of observed overlapping genes between query gene list and reference gene set from a total of 36,601 genes. Gene Ontology terms were considered significant when FDR-adjusted $P < 0.05$.

Enrichment of WGCNA gene module was scored as previously described⁹¹ using AddModuleScore in Seurat v4, which calculates the per-cell average RNA expression of all genes in module subtracted by the aggregated expression of a set of 100 randomly selected genes in the same cells. Note that module score considers the average expression of all genes in a gene set where the weight of each gene expression is the same. This may lead to some cells having high module scores scattered across the UMAP albeit having poor gene co-expression in those cells, since the scores may be skewed by genes that are highly expressed across clusters. Significance of module score differences between cell groups were tested using Wilcoxon rank-sum test.

Flow cytometry

Primary CD4⁺ T cells or primary memory CD4⁺ T cells were isolated by magnetic negative depletion (by STEMCELL catalog no. 17952 or Miltenyi catalog no. 130-091-893) from de-identified uninfected individuals (New York Blood Center) and activated with anti-CD3/CD28 antibodies for 3 days in the presence of IL-2 at 30 U/ml. Cells were infected with replication-competent NL4-3 reference strain and three R5-tropic reconstructed clinical isolates 10CB6, 16CB3, and 20CB3 as previously reported⁴⁹ for 3 days. Cells were stained with LIVE/DEAD Fixable Near-IR–Dead Cell Stain Kit (Thermo Fisher catalog no. L34975), stained with Human BD Fc Block (BD Biosciences catalog no. 564219), stained with surface protein markers (CD4-APC, clone OKT4, BioLegend catalog no. 317416), permeabilized with eBioscience Foxp3 / Transcription Factor Staining Buffer (Thermo Fisher catalog no. 00-5523-00), and stained intracellular proteins HIV-1 core antigen-RD1 (clone KC57, Beckman Coulter catalog no. 6604667), Aiolos (BV421, clone 14C4C97, BioLegend catalog no. 371010) and Ki67 (BUV395, clone 56, BD Biosciences catalog no. 564071). Note that Aiolos antibody clone 16D9C97 resulted in nonspecific staining and was not used. Flow cytometry was performed at Beckman CytoFLEX and analyzed using FlowJo v10.8.1.

QUANTIFICATION AND STATISTICAL ANALYSIS

Unless otherwise stated, statistical analysis was performed using R (version 4.0.5). For all analyses, the statistical tests used, sample size n , mean, median, and standard deviation are described in the figure legends when applicable. For additional details of the statistical tests used for each type of analysis (e.g., WGCNA, Gene Ontology, down-sampling and bootstrapping for comparisons between HIV-1⁺ vs HIV-1⁻ cells), see also relevant STAR Methods sections. Unless otherwise stated, P values were corrected for multiple comparisons using the Benjamini-Hochberg (FDR) procedure⁸⁶ when applicable. For all statistical analyses, significance was defined as FDR-adjusted $P < 0.05$ or $P < 0.05$. Poor quality cells were excluded from analysis (see STAR Methods for quality control metrics). No data or subjects were excluded from analysis.