

# NOTES:

1. THE PURPOSE OF THIS SURVEY IS TO RETRACE THE WEST, SOUTH, AND EAST BOUNDARIES OF THE NORTHWEST QUARTER OF THE NORTHWEST QUARTER OF SECTION 26, T18N, R17W, M.D.M. AND TO RETRACE THE SECTION LINE BETWEEN SECTIONS 22 AND 27, T18N, R17W, M.D.M.
2. THE LINES SURVEYED HEREON WERE FOUND TO BE MARKED BY BLAZED TREES IN ADDITION TO THE FOUND MONUMENTS SHOWN. TREES ARE TYPICALLY BLAZED WITH A VERTICAL STACK OF THREE BLAZES FACING THE BOUNDARY ON TREES NOT ON LINE OR A VERTICAL STACK OF THREE BLAZES ON LINE ON LINE TREES (ONE SIDE ONLY). TREE BLAZES WERE PAINTED WITH RED TREE PAINT.
3. THE EAST LINE OF THE NORTHWEST QUARTER OF THE NORTHWEST QUARTER OF SECTION 26 WAS FOUND TO BE INCORRECTLY BLAZED. BLAZED TREES WERE FOUND UP TO 15 FEET WEST OF THE EAST LINE. THE BOUNDARY WAS RE-BLAZED BY CHOPPING A VERTICAL STACK OF THREE BLAZES FACING THE BOUNDARY ON TREES ENTIRELY ON THE STATE FOREST SIDE OF THE LINE OR A VERTICAL STACK OF THREE BLAZES WHERE THE BOUNDARY ENTERS AND EXITS BOTH SIDES OF LINE TREES. TREES ENTIRELY ON THE PRIVATE SIDE OF THE BOUNDARY WERE MARKED WITH THREE SPOTS OF RED TREE PAINT ONLY. ALL CORRECT BLAZES ARE PAINTED WITH RED TREE PAINT. INCORRECT BLAZES ARE PAINTED WITH BLACK TREE PAINT.
4. THE FOUND REBARS AT A, B, C, D, E, F, G, J, K, L, AND M ARE NOT OF RECORD HOWEVER THEY APPEAR TO HAVE BEEN PULLED OFF TRAVERSE POINTS SET BY CDF SURVEYORS IN 1972. WE HAVE THE FIELD NOTES OF THE TRAVERSE ON FILE BUT THEY MAKE NO MENTION OF SETTING THE REBARS.
5. THE FOUND REBARS AT N, O, P, Q, R, S, T, AND U WERE SET BY JAMES C. CONKRIGHT, LS 3137 IN MAY 1972 PER HIS FIELD NOTES OF HIS SURVEY WHICH WAS FILED IN M.C.2, D.20, P.44. WE HAVE CONKRIGHT'S ORIGINAL FIELD NOTES ON FILE.
6. SEE SHEET 2 FOR FOUND AND SET MONUMENT DESCRIPTIONS.

## SURVEYOR'S STATEMENT

THIS MAP CORRECTLY REPRESENTS A SURVEY MADE BY ME OR UNDER MY DIRECTION IN CONFORMANCE WITH THE REQUIREMENTS OF THE PROFESSIONAL LAND SURVEYORS' ACT AT THE REQUEST OF THE STATE OF CALIFORNIA, DEPARTMENT OF FORESTRY AND FIRE PROTECTION, IN AUGUST, 2012.

*David B. Karoly* 11/14/2012  
DAVID B. KAROLY  
LS 7849



## COUNTY SURVEYOR'S STATEMENT

THIS MAP HAS BEEN EXAMINED IN ACCORDANCE WITH SECTION 8766 OF THE PROFESSIONAL LAND SURVEYORS' ACT, THIS 14 DAY OF NOVEMBER, 2012.

*Howard N. Dashiell*  
HOWARD N. DASHIELL, LS 7148, LIC. EXP. 06/30/2013  
COUNTY SURVEYOR, MENDOCINO COUNTY, CALIFORNIA



## COUNTY RECORDER'S STATEMENT

FILED THIS 27 DAY OF November, 2012, AT 2:57 AM, IN MAPS, DRAWER 82 AT PAGE 48-49, (M.C.R.), AT THE REQUEST OF THE DEPARTMENT OF FORESTRY AND FIRE PROTECTION.

SUSAN M. RANOGAJAK  
COUNTY RECORDER

BY: *Crystal Fogelbanger*  
DEPUTY COUNTY RECORDER

NO FEE

## RECORD OF SURVEY

OF  
THE NORTHWEST QUARTER OF THE NORTHWEST QUARTER OF SECTION 26 AND THE SECTION LINE BETWEEN SECTIONS 22 & 27 OF TOWNSHIP 18 NORTH, RANGE 17 WEST, M.D.M.

THE STATE OF CALIFORNIA,  
DEPARTMENT OF FORESTRY AND FIRE PROTECTION,  
COUNTY OF MENDOCINO, STATE OF CALIFORNIA.

AUGUST 2012 SCALE: 1"=400'

SHEET 1 OF 2

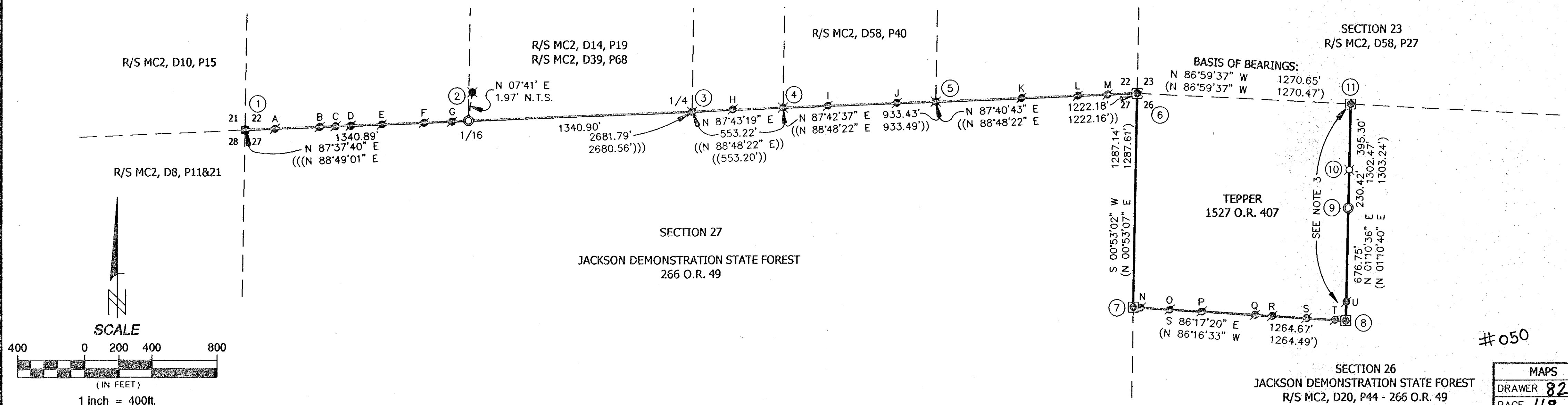
## BASIS OF BEARINGS:

THE BASIS OF BEARINGS OF THIS SURVEY IS THE NORTH LINE OF THE NORTHWEST QUARTER OF THE NORTHWEST QUARTER OF SECTION 26, T18N, R17W, M.D.M. AS SHOWN ON MAP CASE 2, DRAWER 20, PAGE 44 AND IS ESTABLISHED FROM FOUND MONUMENTS SHOWN HEREON.

## LEGEND:

- BOUNDARY LINE SURVEYED AND FOUND TO BE BLAZED EXCEPT AS NOTED (SEE NOTE 2)
- FOUND 4"x4" CONCRETE MONUMENT SET BY F.E. LERMOND ORIENTED AS SHOWN AND MARKED AS NOTED.
- FOUND 4"x4" CONCRETE MONUMENT WITH 2-1/2"Ø CAP STAMPED AS SHOWN.
- FOUND 1/2" REBAR UNLESS OTHERWISE NOTED.
- FOUND MONUMENT AS NOTED HEREON
- SET 2"Øx27" ALUMINUM MONUMENT WITH 3-1/4"Ø CAP STAMPED AS SHOWN.
- SET 3/4"x30" LONG REBAR WITH 2-1/2"Ø ALUMINUM CAP STAMPED AS SHOWN.
- ( )= RECORD DATA PER M.C.2, D.20, P.44, M.C.R.
- (( ))= RECORD DATA PER M.C.2, D.58, P.40, M.C.R.
- (( ( ))= RECORD DATA PER M.C.2, D.14, P.19, M.C.R.

N.T.S.=NOT TO SCALE



#050

MAPS  
DRAWER 82  
PAGE 48

ROS 29-12