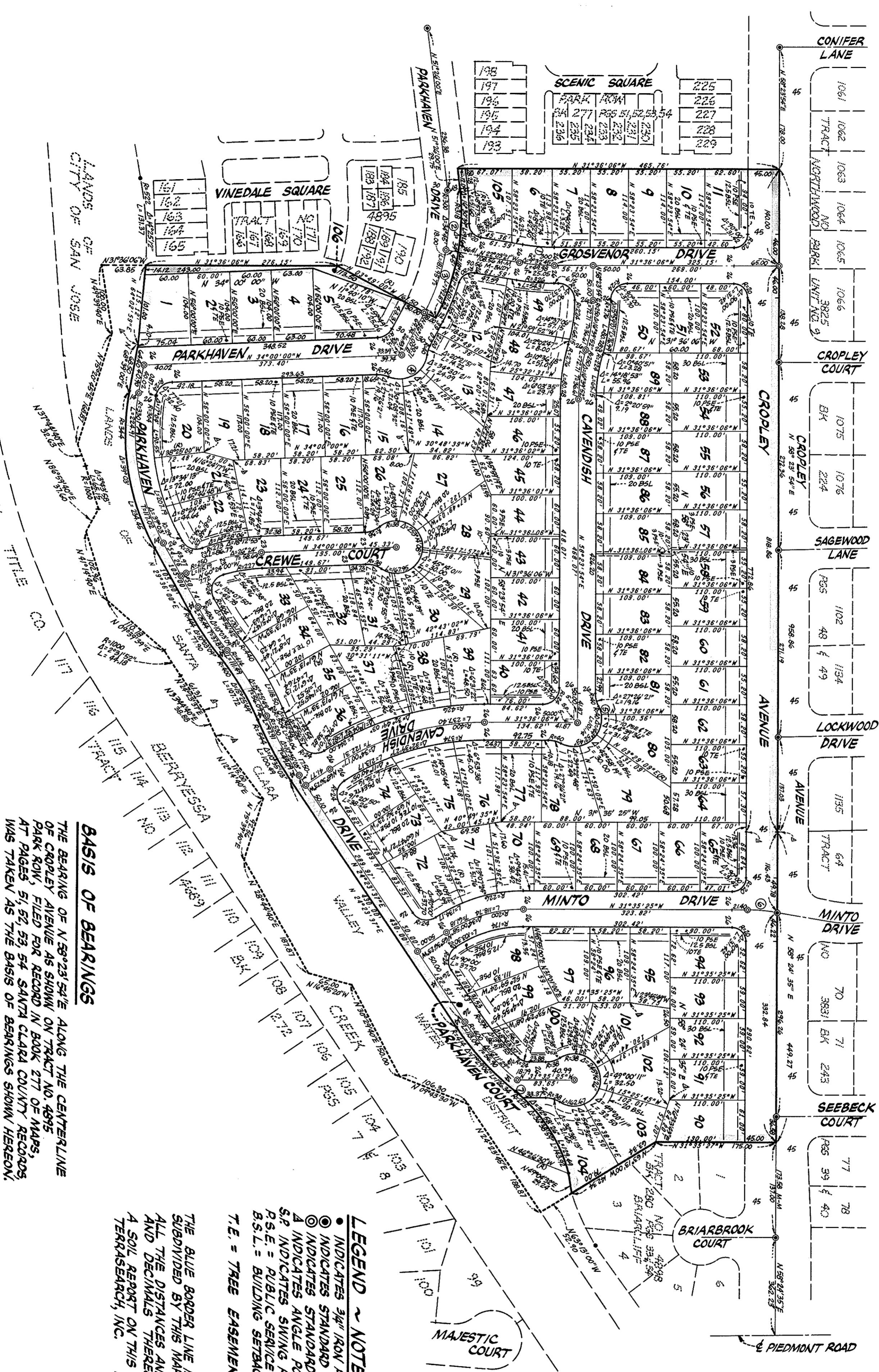


NO	R	Δ	L	T
1	274	90°32'45"	45.65	
2	300	10°30'39"	86.45	43.53
3	300	10°30'39"	75.50	48.16
4	40	107°37'12"	75.13	
5	40	17°52'	12.47	
6	2322	90°54'50"	43.81	21.96
7	225	30°40'34"	14.44	

TRACT NO. 5600
 CONSISTING OF TWO SHEETS
 BEING A PORTION OF PUEBLO TRACT NO. 1 SAN JOSE
 CITY LANDS AND LYING WITHIN THE CITY OF
 SAN JOSE
 CALIFORNIA
 SCALE: 1"=100'
 JANUARY, 1975



BASIS OF BEARINGS
 THE BEARING OF N 59°23'54"E ALONG THE CENTERLINE OF CROPLEY AVENUE AS SHOWN ON TRACT NO. 4895, PARK ROW, FILED FOR RECORD IN BOOK 277 OF MAPS, AT PAGES 51, 52, 53, 54 SANTA CLARA COUNTY RECORDS, WAS TAKEN AS THE BASIS OF BEARINGS SHOWN HEREON.

- LEGEND - NOTES**
- INDICATES 3/4" IRON PIPE FOUND
 - INDICATES STANDARD CITY MONUMENT FOUND
 - ⊙ INDICATES STANDARD CITY MONUMENT SET
 - Δ INDICATES ANGLE POINT
 - SP INDICATES SWING POINT
 - PS.E. = PUBLIC SERVICE EASEMENT
 - BS.L. = BUILDING SETBACK LINE (SEE ZONING ORDINANCE FOR ALL SETBACK REQUIREMENTS)
 - T.E. = TREE EASEMENT

THE BLUE BORDER LINE INDICATES THE BOUNDARY OF LAND SUBDIVIDED BY THIS MAP.
 ALL THE DISTANCES AND DIMENSIONS ARE GIVEN IN FEET AND DECIMALS THEREOF.
 A SOIL REPORT ON THIS PROPERTY HAS BEEN PREPARED BY TERRASEARCH, INC. DATED AUGUST, 1974.