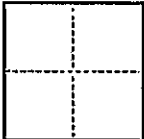


CORNER RECORD

CR 77

COUNTY OF ALAMEDA T. 1S R. 3W Mt. Diablo MERIDIAN CALIFORNIA

CORNER TYPE: GOV'T. CORNER ☐ MEANDER ☐ RANCHO ☐ CONTROL ☒ OTHER ☐
CORNER IDENTIFICATION — DATE OF VISIT November 19 89



CORNER — LEFT AS FOUND ☐ FOUND AND TAGGED ☐ REESTABLISHED OBLITERATED CORNER ☐ REBUILT ☒

PHYSICAL DESCRIPTION OF CORNER FOUND; EVIDENCE AND METHOD USED TO IDENTIFY OR REESTABLISH

FOUND OLD PIN MONUMENT IN MORAGA AVENUE UNDER NUMEROUS STREET SECTIONS. MONUMENT WAS DISCOVERED IN OLD CASTING AND DETERMINED TO BE PIN MONUMENT AS PER MAP OF HILLSIDE PARK, FILED JUNE 12, 1917, IN MAP BOOK 16, UPON PAGE 36. DISTANCE WAS MEASURED TO EXISTING MONUMENT AT THE INTERSECTION OF MORAGA AVE. AND HIGHLAND AVENUE, AND RESULT WAS FOUND TO BE IN CONFORMANCE WITH RECORD DATA.

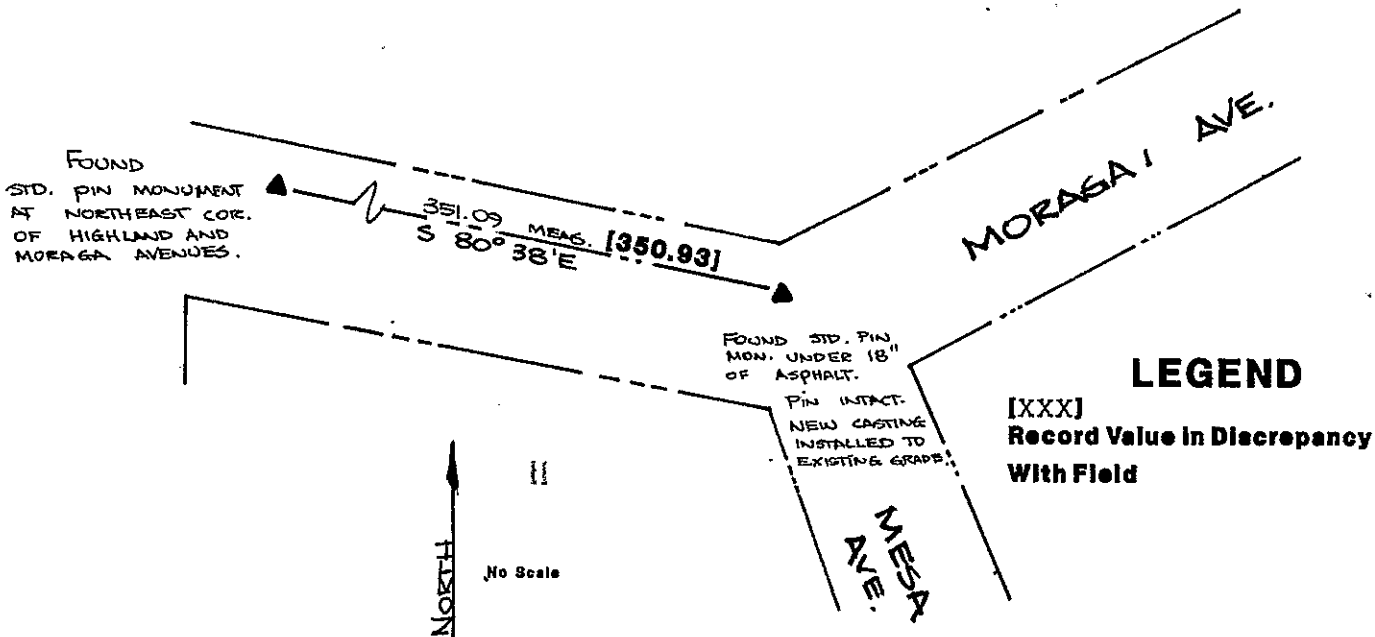
PHYSICAL DESCRIPTION OF MONUMENTS REBUILT OR PERPETUATED

PIN WAS CLEANED OF CORROSION AND A NEW CASTING WAS PLACED TO GRADE AT THE LOCATION (MORAGA AND MESA AVENUES).

CALIFORNIA COORDINATE SYSTEM ORDER: FIRST ☐ SECOND ☐ THIRD ☐
STATIONS USED: NGS (USC & GS) ☐ STATE ☐ COUNTY ☐ OTHER ☒ STATION _____ STATION _____
ZONE _____ ELEVATION _____ NORTHINGS (Y) _____ EASTINGS (X) _____

(Fold)

SKETCH: (Include reference tie or witness points, remarks and topo of area)

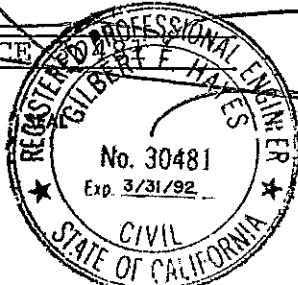


SURVEYOR'S CERTIFICATE

THIS CORNER RECORD WAS PREPARED BY ME OR UNDER MY DIRECTION IN CONFORMANCE WITH THE LAND SURVEYORS ACT ON November 28 19 89

SIGNED: _____

L.S. or R.C.E. No.: PLS 4700/RCE



COUNTY SURVEYOR'S CERTIFICATE

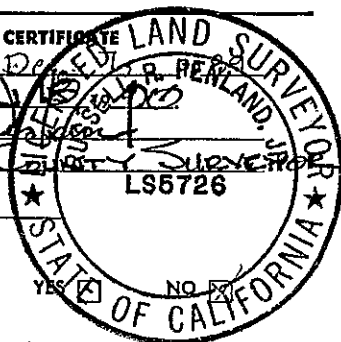
THE CORNER RECORD WAS RECEIVED December 1, 1989 AND EXAMINED AND FILED LS5726

BY: _____

TITLE: _____

DOCUMENT No. 90-3

STATEMENT ON BACK OF SHEET



Book 1 C.R. Page 77